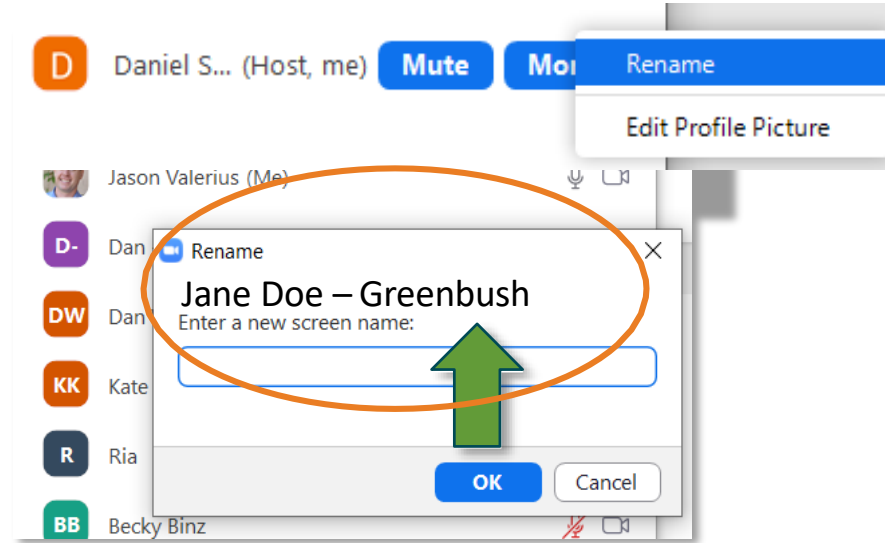


WHILE YOU ARE WAITING FOR THE MEETING TO START

- Check to see your name is correct.
 - The name must match the name you used to register for this meeting.
 - You can edit it if needed



Meeting Logistics

- All participants will be muted during the presentation and unmuted for the discussion sessions.
- Please use the “Raise Hand” button if you have a question. We will take questions during discussion sessions.
- This meeting will be recorded and available online to view later.



Meeting Logistics

- Visit project webpage to view (web based) the Draft Plan and supporting descriptions.
- <https://www.cityofmadison.com/parks/projects/country-grove-park-bike-optimized-singletrack>
- You may also email cstelljes@cityofmadison.com to share your comments.
- If you have questions about the project or specific features or amenities, please type them into the chat window and we will answer them at the end of the meeting.

disclaimer

- **This meeting is being recorded.**
- **It is a public record subject to disclosure.**
- By continuing to be in the meeting, you are consenting to being recorded and consenting to this record being released to public record requestors.

Introduction

- Corey Stelljes; P.E. - City of Madison Parks Division Project Engineer
- Ann Freiwald, P.L.A -City of Madison Parks Division Planning and Development Manager



Country Grove Park Single track Improvements
Bike Optimized Natural Surface Trail

- “Providing access to the natural surface trail experience in our community”



play
**MADISON
PARKS**

Welcome

- Thanks for coming, we're looking forward to talking about the singletrack at Country Grove Park. We want to hear your thoughts and ideas, so to make sure everyone has an equal chance to speak...
- - We address all comments/questions during discussion periods and at the end of the presentation.
- - No disparaging remarks about others' comments or City Staff.
- - If you are not comfortable speaking tonight, please call or email

Meeting Agenda

- Welcome and Introductions
- Project Timeline
- Planning, Background, and MadBAT
- Trail Details
- Survey Results
- FAQ's
- Questions and Answers

Project Timeline

2000 to present	Community Feedback- Need for Trails
2018	Park and Open Space Plan Recommends Trail Development In Madison Parks
2020	City Wide MadBAT Planning Project
2021	Pump Track Construction (Aldo Leopold Park)
2022	Cannonball “Shred to School” Singletrack Constructed
2023	Singletrack Under Construction at Sycamore Park
2023	Country Grove Park Master Plan Calls For Recreational Bike Amenities
2024	Madison Parks Receives Dane Co PARC and Ride Grant for Bike Amenities at Country Grove Park
June 27th, 2024	Public Informational and Input Meeting
Fall 2024	Development of Construction Drawings and Bidding
2025	Construction

Why Bike Optimized Trails?

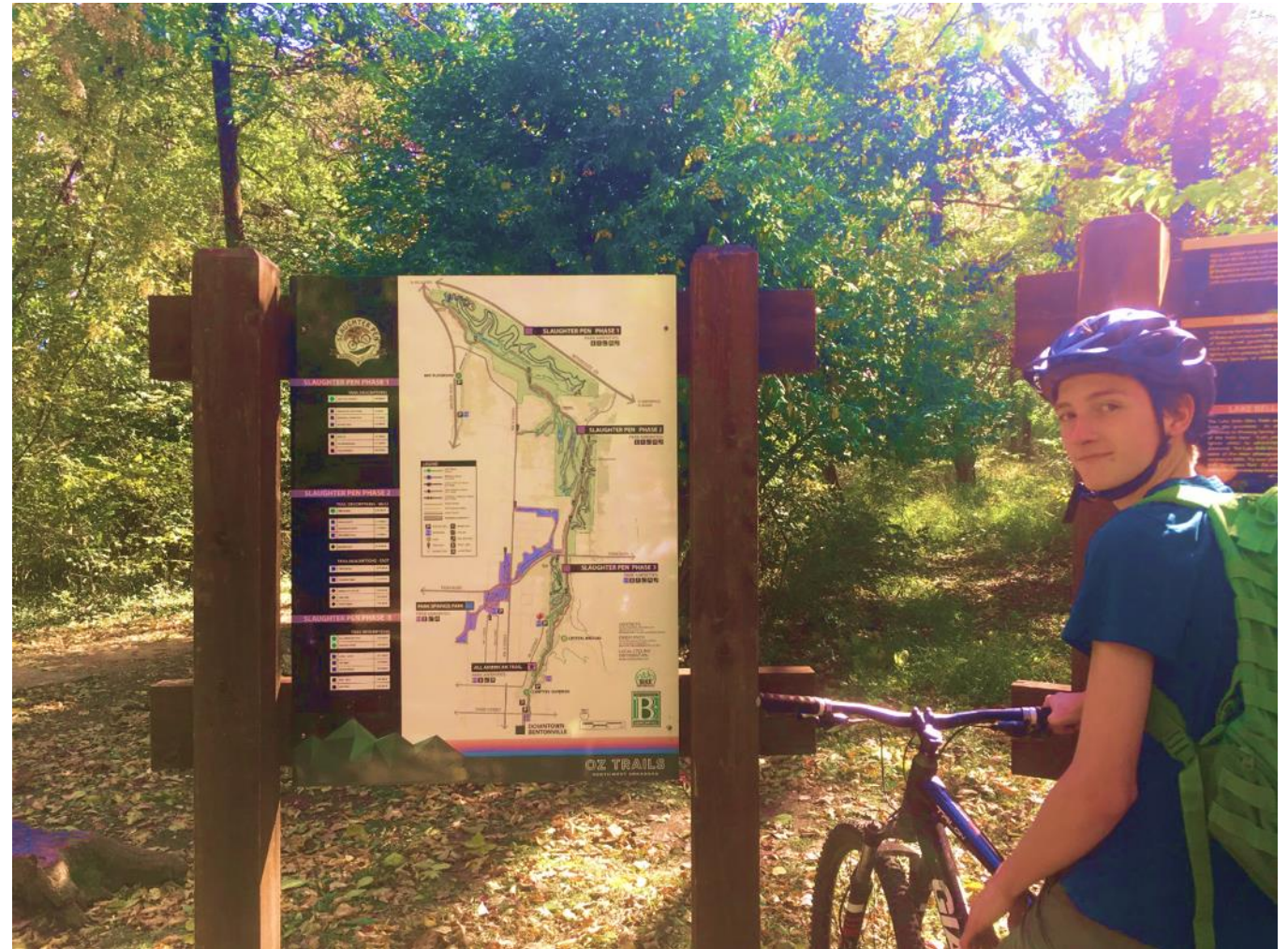
- Trails support an active lifestyle
- Health and wellbeing benefits
- Access to trails makes for a desirable place to live
- Recreational amenities increase community value
- Respond to outdoor experience demand
- Make bike transportation fun!





Adaptability: An adaptable, flexible park system should evolve in conjunction with changes in it's users.

- Wide range of experiences for a wide range of park users.
- Adding recreational opportunity to underused park lands.



Bike Optimized Natural Surface Trail- What is it?

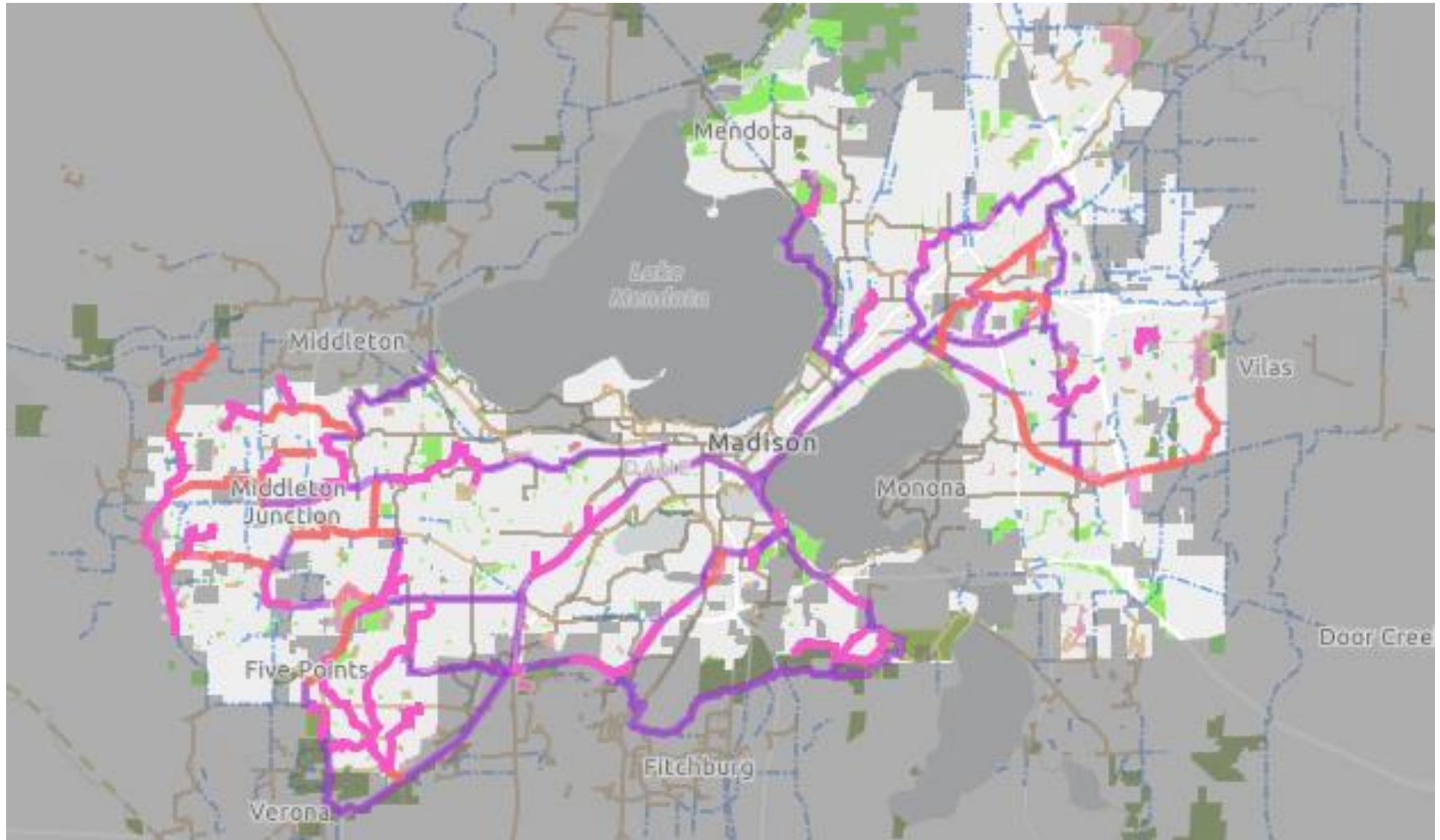
- Recreational amenity
- Natural surface trails for riding bikes, walking, hiking, and trail running.
- Connection to nature and neighborhoods
- A way to learn more about the recreational spaces in Parks
- Open to non motorized users (walkers, hikers, bikes)

play
**MADISON
PARKS**



MadBAT- Concept Plan

[Madbat Story Map](#)



Country Grove Park Site Plan

Why here?

- *More Trails Close to Home*
 - Close to schools and residential area
 - Ability to Ride to Trails, not drive
 - Accessible to all
 - Potential to connect kids to school
 - West side trail location
 - On street bike lanes
- Trail footprint
 - 4'-6' wide corridor during construction
 - 24"-36" final tread
 - Side slopes restored to grass
- Within existing green space
 - Along greenway corridor
 - Doesn't interfere with any existing amenities
 - Existing area is not maintained for other uses



TRY GROVE PARK - BIKE TRAIL CONCEPTUAL

- Chip Seal Tread - Segment 102
- Chip Seal Tread - Segment 103
- Chip Seal Tread - Segment 104
- Chip Seal Tread - Segment 105
- Hub / Junction
- Bridge / Armored Crossing
- Rock Feature



PURPLE - Segment 103
Length: 1,490ft
Rock Features: 5

BLUE - Segment 101
Length: 925ft
Rock Features: 4

ORANGE - Segment 105
Length: 1,280ft
Rock Features: 6

RED - Segment 102
Length: 1,485ft
Rock Features: 6

YELLOW - Segment 104
Length: 1,225ft
Rock Features: 5

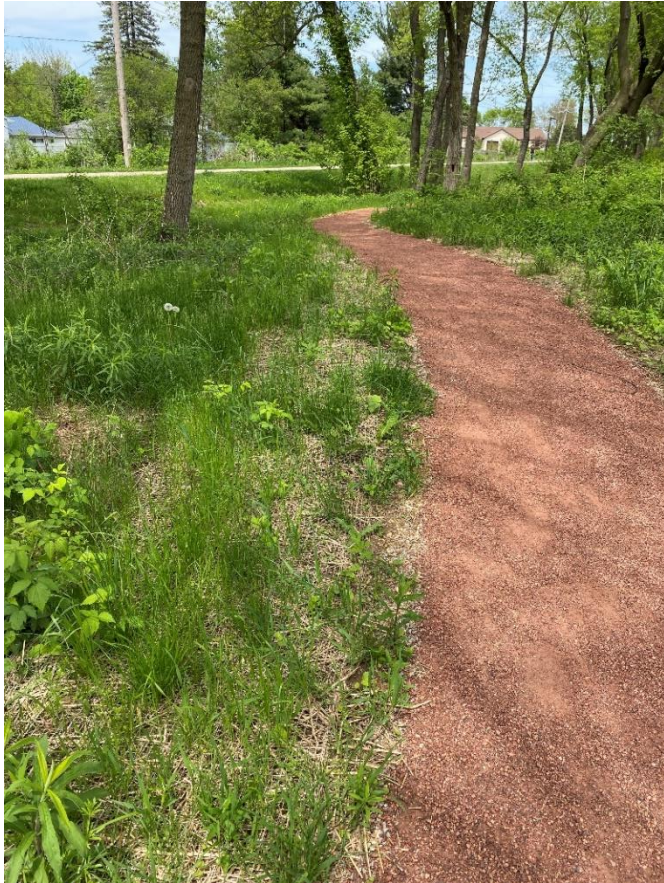
DRAFT

Total Segment
Length: 6,405ft
Rock Features: 26



Chip Seal Surface Trail

- Compacted dirt (native material)
- Capped with layer of crushed stone
- All weather ridability
- Complimented with stone where required



TTF's

- Wood boardwalks
- Stone ramp or jump
- Over low or wet areas
- Add fun riding element or challenge
- Optional Ride Around



Sustainability



What Are Sustainable Trails?

A sustainable trail allows users to enjoy a natural area with minimal impact to the ecosystem and continues to meet the management objectives.

- Allows visitors to achieve their recreation goals.
- Protects resources.
- Minimizes maintenance requirements.
- Minimizes conflict between visitors.
- Increases the capacity of the land for enjoyment with minimal negative impacts.



Signage

Signage is critical to providing a high quality user experience and mitigating unnecessary risk. Trail maps and apps are not a replacement for clear signage.

- Guides users through the trail network.
- Provides users with behavior and etiquette expectations.
- Can create opportunities to interpret the surroundings.
- Displays emergency contact and procedure info.
- Communicates risk by posting hold harmless language.





Online Survey Analysis

- June 4th- July 5th
- Survey open through July 5th
 - Final results will be posted on project webpage
 - Public feedback tool- for information only

FAQ's

- **Who will be able to use the trail?**
 - Open to all non motorized users (bikes, trail runners, hikers, etc)
- **What hours will the trail be open?**
 - Open all hours of normal park operation
- **Are bike trails dangerous?**
 - Element of risk in all outdoor recreation
 - Playgrounds, sport courts, paved paths, etc
 - Educate users on risk
 - Skill progression
 - Use of turns and features to control speed
 - Allow people to chose their preferred level of risk
- **Will new park users follow the rules and be courteous to others?**
 - Same rules apply to all park users before and after new projects
 - Expect to follow trail etiquette and politely interact with others
 - Parks can revisit signage and design if issues are reoccurring
 - Single direction minimized congestion and conflict

FAQ's

- **Will there be a fee for trail use?**
 - Open and free to the public like other park amenities (courts, play fields, playgrounds, etc)
- **Who will maintain the trail?**
 - Parks staff
 - Trail Building contractors
 - Volunteers
- **More trails in Madison is a big need and long overdue, how can I become involved?**
 - Watch for more notifications on proposed trail projects in the coming years
 - Join Capital Off Road Pathfinders (CORP), a local IMBA chapter for trail updates and volunteer opportunities!

PUBLIC INPUT PERIOD

Please use the “raise hand” feature if you wish to provide comments



NEXT STEPS

- Gathering public input
 - Be sure to contact us with comments
 - Madison Parks will analyze public input and site conditions
 - Final Design
 - Permitting
 - Bidding
 - Construction
 - Updates Posted to project webpage

Watch the City Parks “Project Portal” website for the Community Survey and project updates!
<https://www.cityofmadison.com/parks/projects/country-grove-park-bike-optimized-singletrack>



- **Questions or comments**

- Email at cstelljes@cityofmadison.com
- Take Online Survey Until July 5th
- Monitor Project Webpage for updates

play
**MADISON
PARKS**