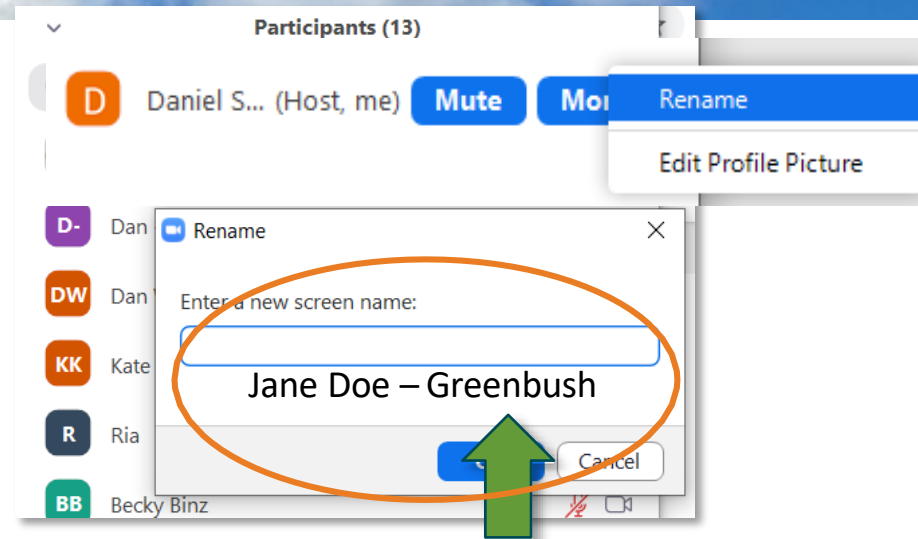
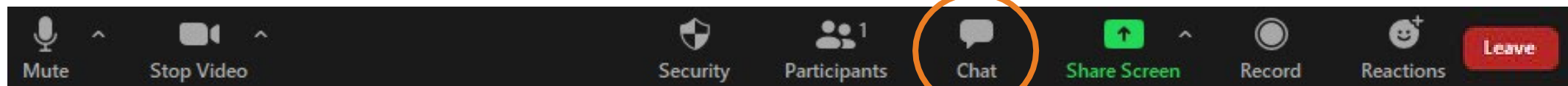


- Check to see your name is correct.
 - The name must match the name you used to register for this meeting.
 - You can edit it if needed



Meeting Logistics

- All participants will be muted during the presentation and unmuted for the discussion sessions.
- Please use the "Chat" window for **questions**, we will respond to as many as possible at the end of the initial presentation.
- This meeting will not be recorded.





**MADISON
PARKS**

Kestrel Park

Park Development Design Input

City Staff

- Adam Kaniewski, Landscape Architect, Madison Parks Division

Meeting Agenda

Review of Park Development Plan



Project Timeline



Community Patio Design



Playground Design



Next Steps

Park Development Plan

Park Development Plan Summary

Introduction

Kestrel Park is located on the far west side of Madison. At the time of this plan, no previous official planning documents were known to exist. The land was dedicated as parkland as part of the Hawks Valley Plat in 2015. Grading activities, including a drainage swale and culvert, were installed in 2021.

Existing Facilities

There are no existing park facilities in Kestrel Park.

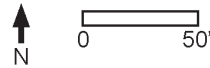
Proposed Facilities

This plan includes a mowed open play field on the north half of the park and a playground area and community patio area on the south side. The playground area will be a typical post and platform structure. The community patio will include a sun shelter and a selection of permanent outdoor yard games such as corn hole, ping pong, etc., and be location for community gatherings. The playground and community patio will be accessible from the street via a paved path. Selection of playground equipment and yard games will be done with input from neighborhood residents. Park areas with steep slopes will be established with native grasses and forbs. A mowed path is required to be maintained on the northwest edge of the park to allow maintenance access to the stormwater management facilities on the adjacent parcel to the west.

Special Conditions

A 12' wide public utility easement is present on the edges of the park adjacent to public right-of-ways. The park is subject to a Public Sanitary Sewer Easement over its entirety. As of 2023, the only existing sanitary sewer pipe within the park is in the northwest corner.

Board of Park Commissioners Approval: June 7, 2023



Project Timeline

Public Input
Meeting #1
(2/22/24)

Public Input
Meeting #2
(March/April 2024)

Construction
(Summer/Fall
2024)

*Construction timeframe may be impacted by
equipment manufacturing lead times/delays

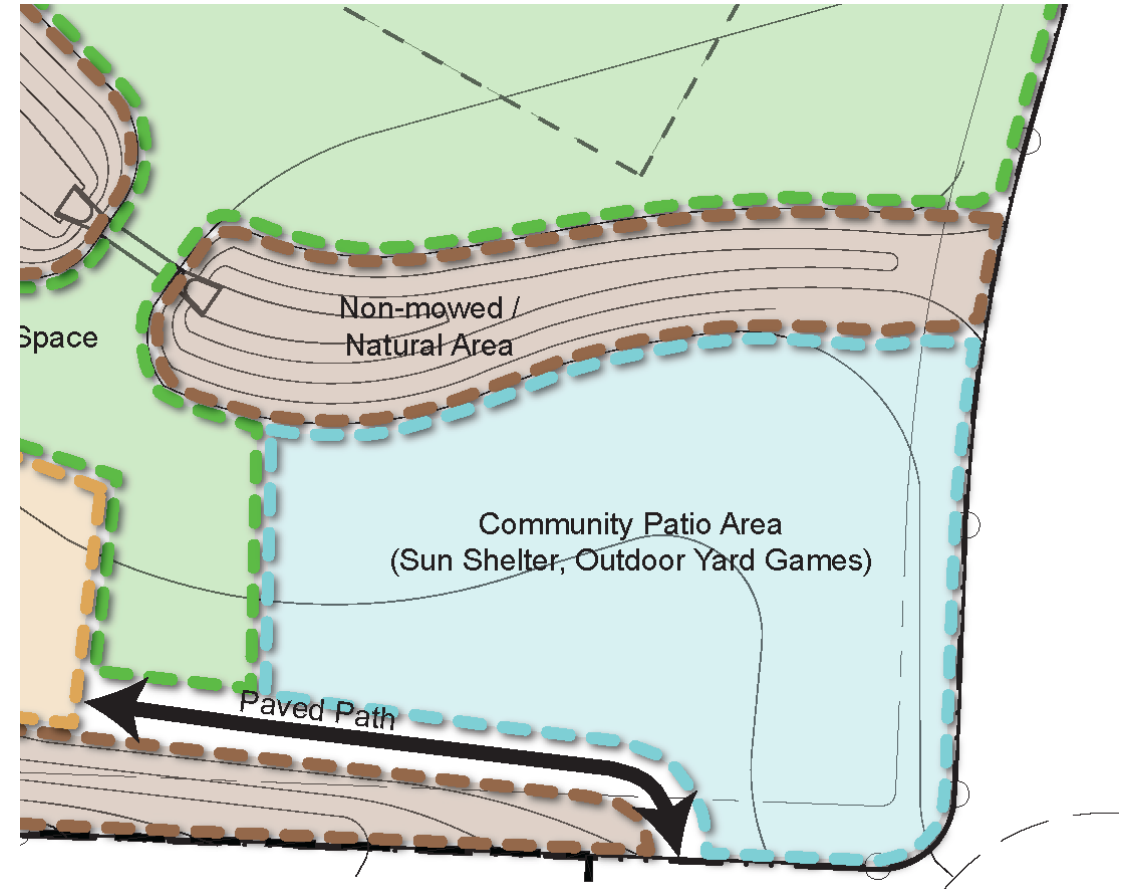
Park Development Plan

- **Managed Meadows**
 - Native wildflowers and grasses
 - Will be installed by a contractor with a minimum 3-year maintenance contract
 - Will be managed in accordance with Madison Parks Land Management Plan (<https://www.cityofmadison.com/parks/documents/LandMgmPlanAdopted2023.pdf>)

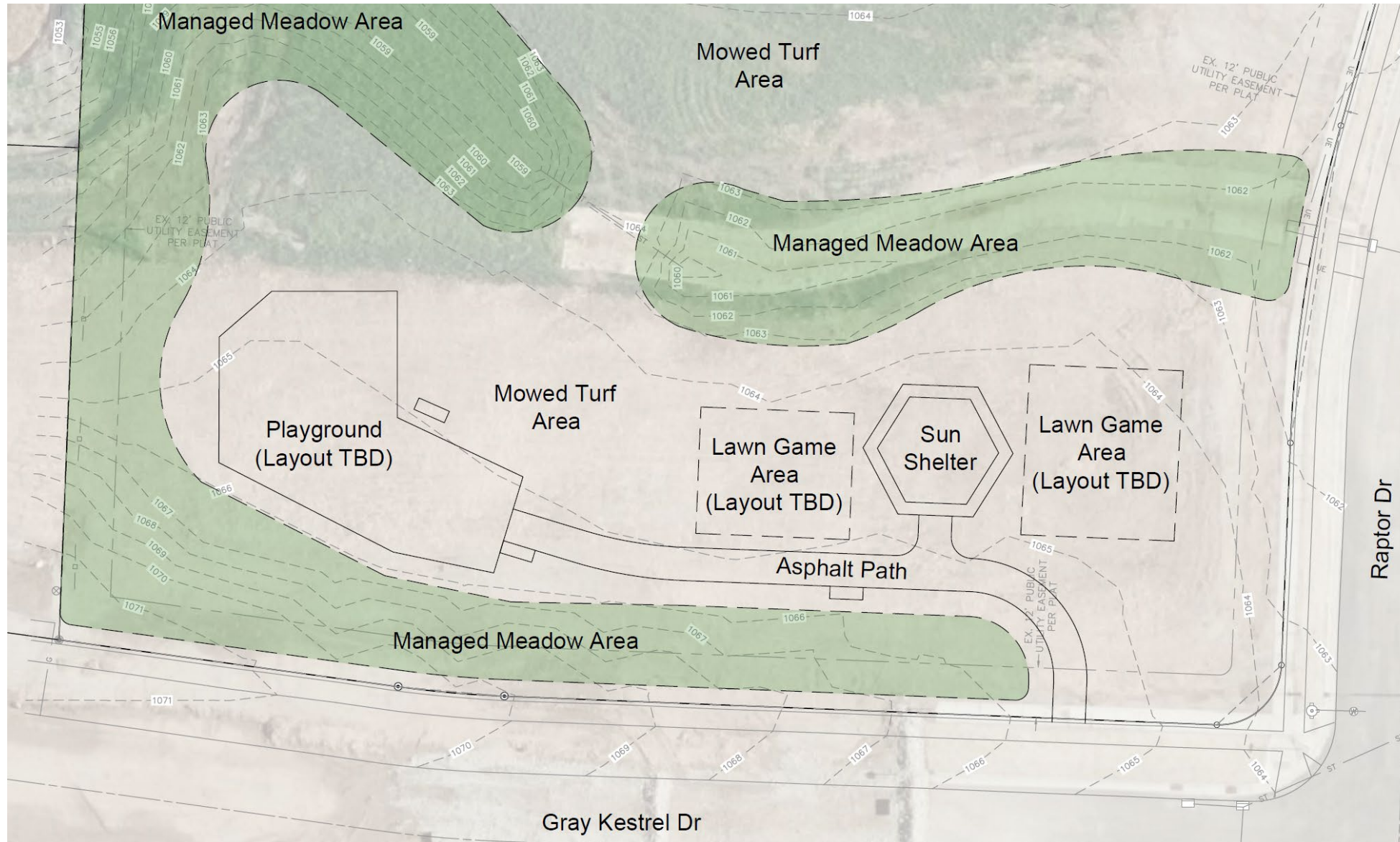


Community Patio

- Sun Shelter
- Porch Swing
- Outdoor Yard Games
 - Bags/Cornhole
 - Chess/Checkers
 - Connect 4
 - Ladder Toss
 - Ping Pong

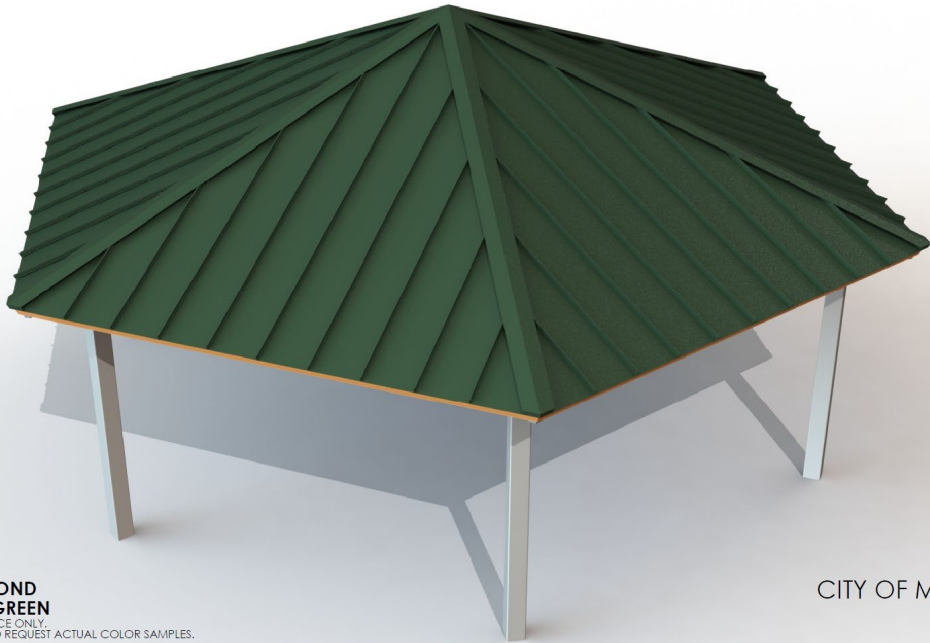


Draft Site Plan



Sun Shelter

poligon®



FRAME COLOR: **ALMOND**
ROOF COLOR: **EVERGREEN**
COLORS SHOWN ARE FOR REFERENCE ONLY.
CONTACT INFO@POLIGON.COM TO REQUEST ACTUAL COLOR SAMPLES.

CITY OF MADISON PARK
MADISON, WI
HXE 28



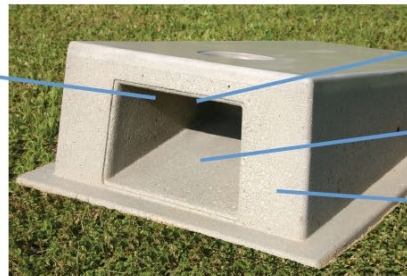
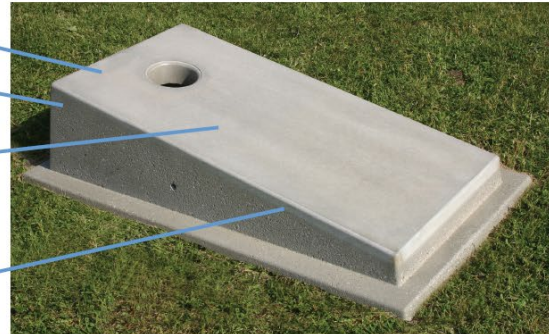
Galaxy Park

Porch Swing



Bags/Cornhole

1. Regulation ACA board size and slope
2. Reinforced with steel and fiber reinforcing
Strong 5000 PSI concrete
3. Polished surface for great bag slide
All boards are polished using a commercial
platen polisher
4. Entire board is sealed with two coats of
water based concrete sealer
5. Open back for easy bag removal



Chess/Checkers Table

6. Sloped bag drop area
Will not harbor animals
7. Sloped bottom
Sheds water, stays clean
8. Lightly sandblasted sides
9. No grass or debris under
the boards

Connect 4



Concrete Ladder Toss



Steel Ladder Toss



Outdoor Yard Games

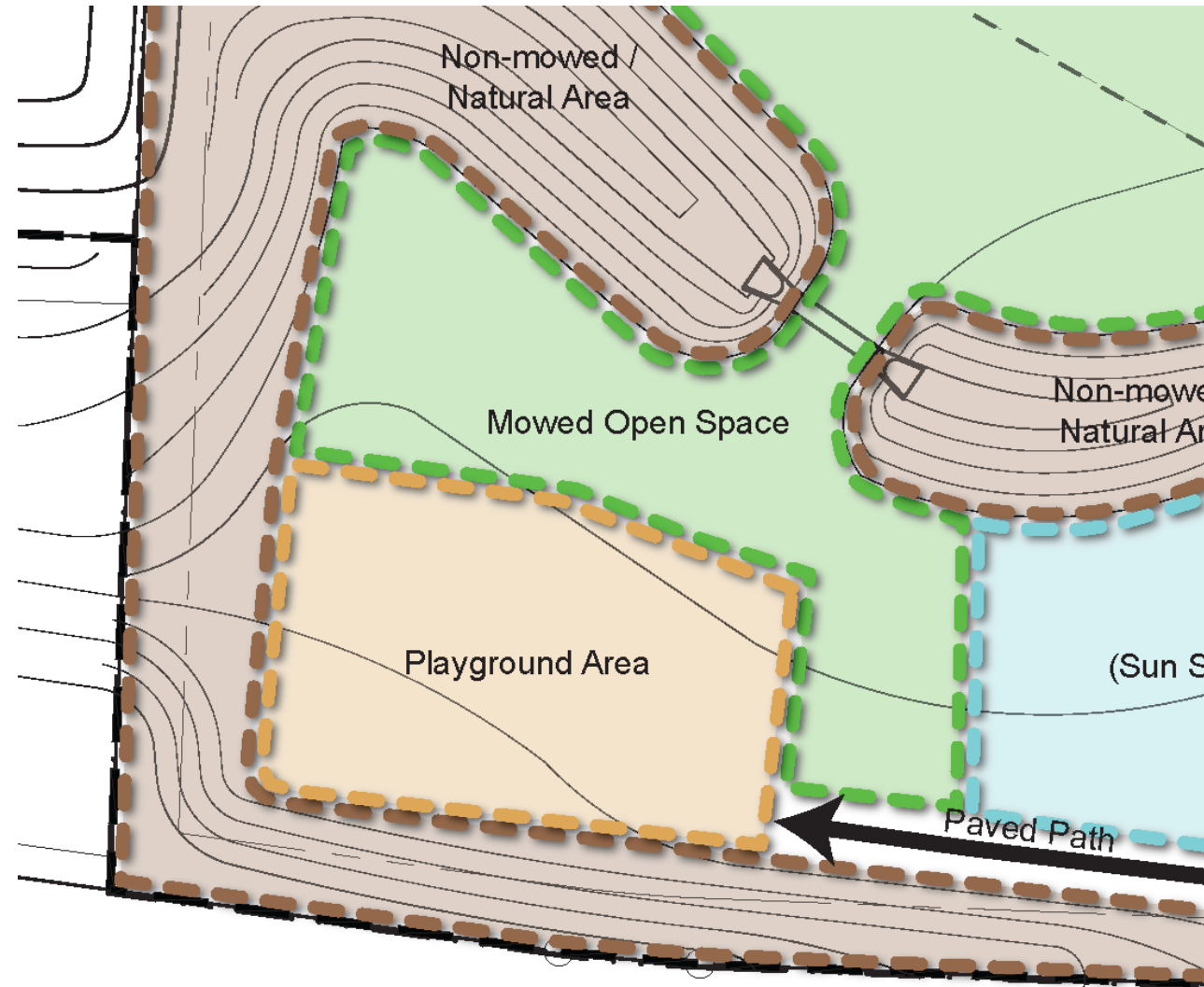
Ping Pong/Table Tennis

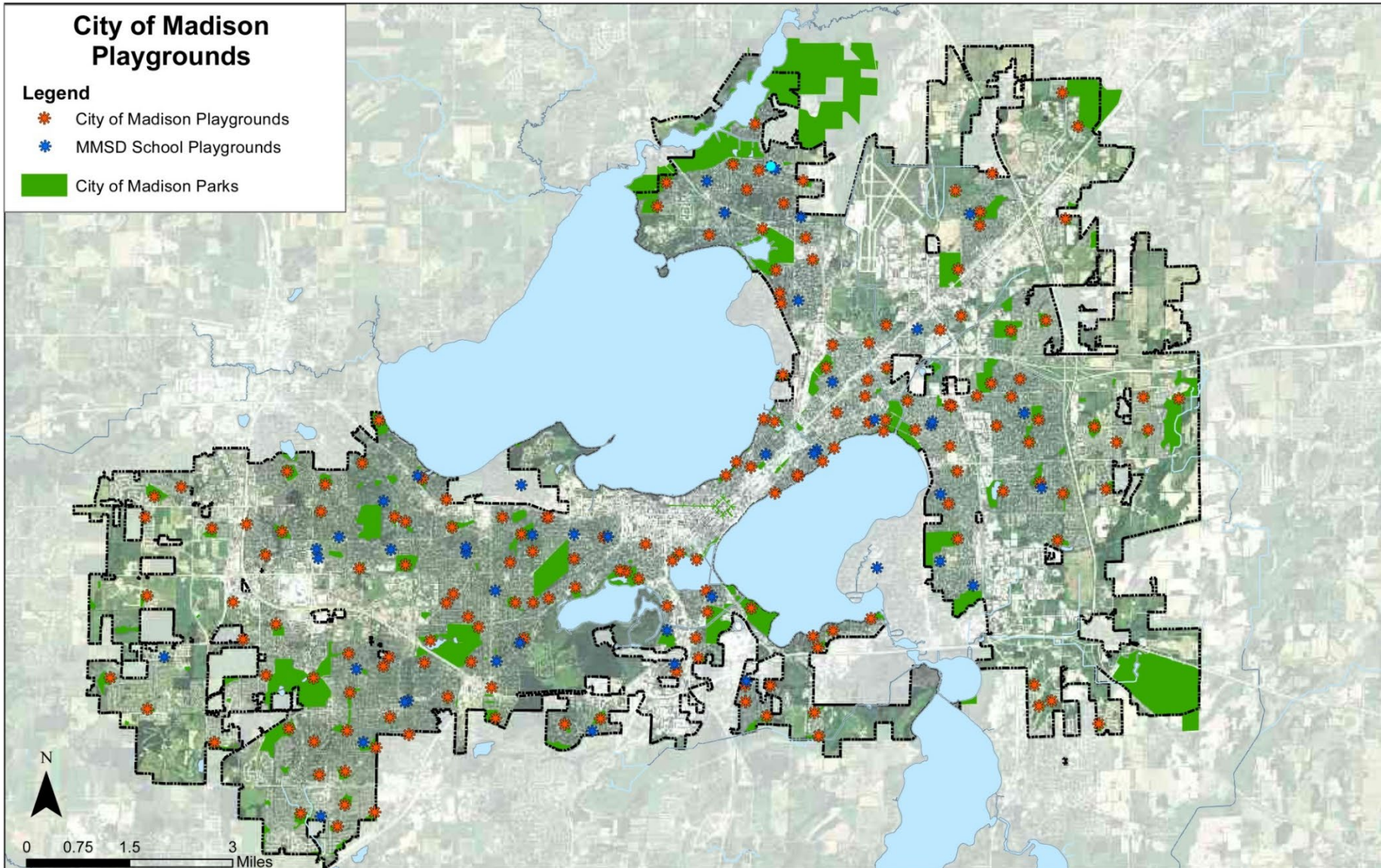


Community Patio – Lawn Game Preferences

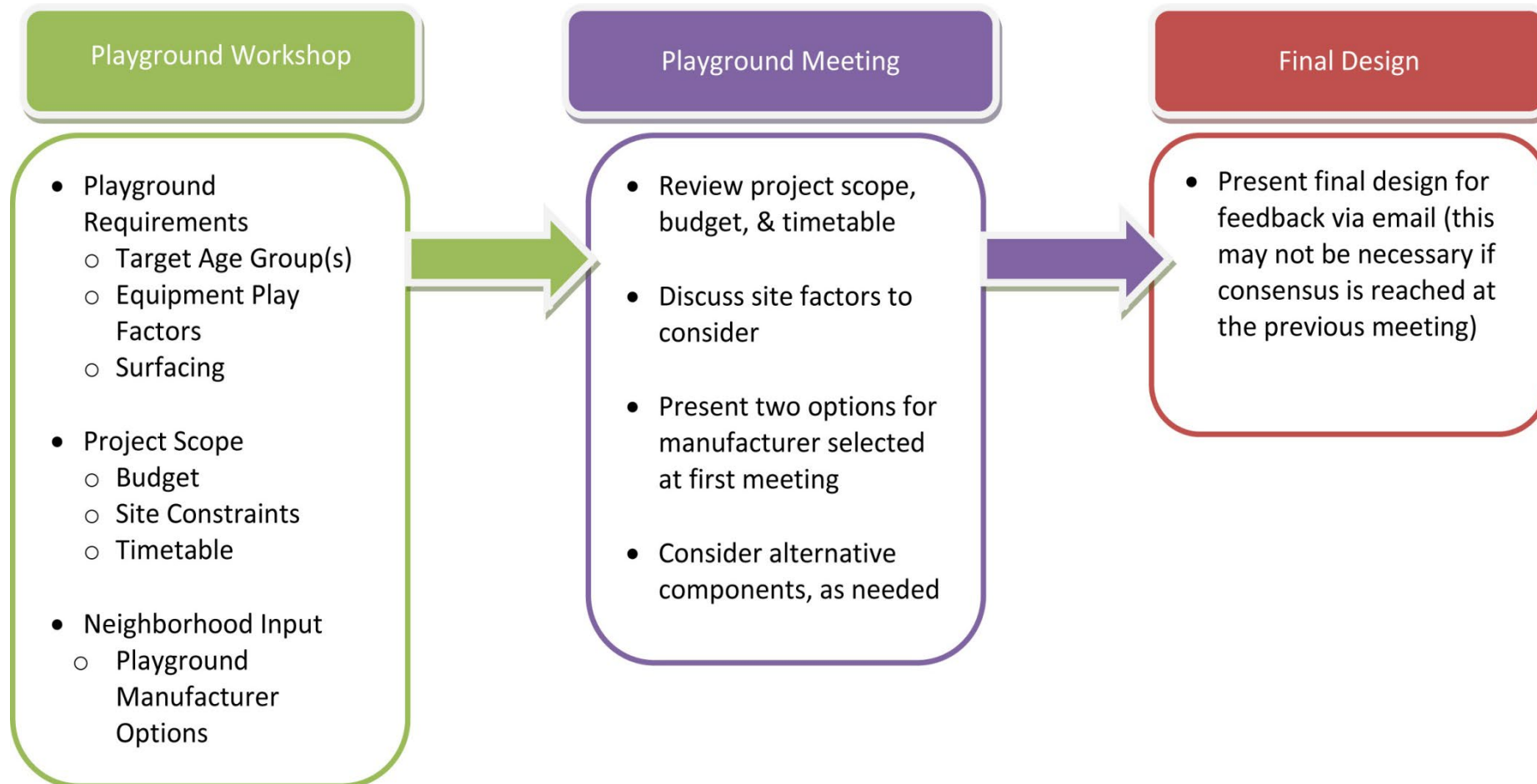
- Q: Select your top two lawn game options.
 - 1. Bags/Cornhole
 - 2. Chess/Checkers Table
 - 3. Connect 4
 - 4. Ladder Toss
 - 5. Ping Pong/Table Tennis

Playground Design





PLAYGROUND DESIGN PROCESS



Playground Equipment Standards

- 1. National Recreation and Park Association**
- 2. Consumer Product Safety Commission (CPSC)**
- 3. American Society for Testing and Materials (ASTM)**
- 4. American National Standards Institute (ANSI)**

Playground Equipment Standards

- **CPSC Design Age Ranges**
- **Colors**
- **Equipment**
- **Surfacing**
 1. **Wood Fiber Mulch**
 2. **Recycled Rubber Mulch**

Playground Budget and Fundraising



City of Madison Playground Options

Age Range: 5-12 Years Old

Company: GameTime



Company: Burke



City of Madison Playground Options

Age Range: 5-12 Years Old

Company: Little Tykes



City of Madison Playground Options

Age Range: 2-5 Years Old

Company: GameTime



Company: Burke



City of Madison Playground Options

Age Range: 2-5 Years Old

Company: Little Tykes



City of Madison Playground Options Colors

Post Colors



Railing Colors



City of Madison Playground Options Surfacing

City of Madison Playground Surfacing Options Comparison

Recycled Shredded Rubber

- Meets U.S. Access Board's ADA Accessibility Guidelines for Play Areas
- Meets CPSC fall height requirements
- Softer play surface material
- Provides alternative use for recycled tires
- Sandalwood/brown color-coated to reduce heat impact compared to non-coated black recycled rubber
- Higher initial cost, lower maintenance cost
- Needs to be topped off every 5 years depending on site conditions and use
- Non-biodegradable
- Thaws fast, playgrounds available throughout the year

Engineered Wood Fiber Mulch

- Meets U.S. Access Board's ADA Accessibility Guidelines for Play Areas
- Meets CPSC fall height requirements
- Not as soft as recycled shredded rubber
- Created by the City from fallen trees and limbs that would otherwise be chipped for mulch
- More likely to get mold and mildew spores
- Lower initial cost, higher maintenance cost
- Needs to be topped off every 1 to 3 years depending on site conditions and use
- Biodegrades
- Thaws slowly, playground use limited during winter conditions



Waltham Park- Rubber



Dudgeon School Park- Wood

Please plan on joining Madison Parks for the second meeting for the development of Kestrel Park, where we will be reviewing and discussing proposed playground designs.

Next Meeting (via Zoom): March of April 2024 (Date TBD)

**Additional information related to this project is posted on the Parks Project Portal, here:
<https://www.cityofmadison.com/parks/projects/kestrel-park-development>**

**Contact Adam Kaniewski, project manager, with additional questions or comments.
(608) 261-4281 or adamkaniewski@cityofmadison.com**

Thank You!

**Please stay connected via the
project website**

**The presentation and
recording will be posted to
the project website afterward**