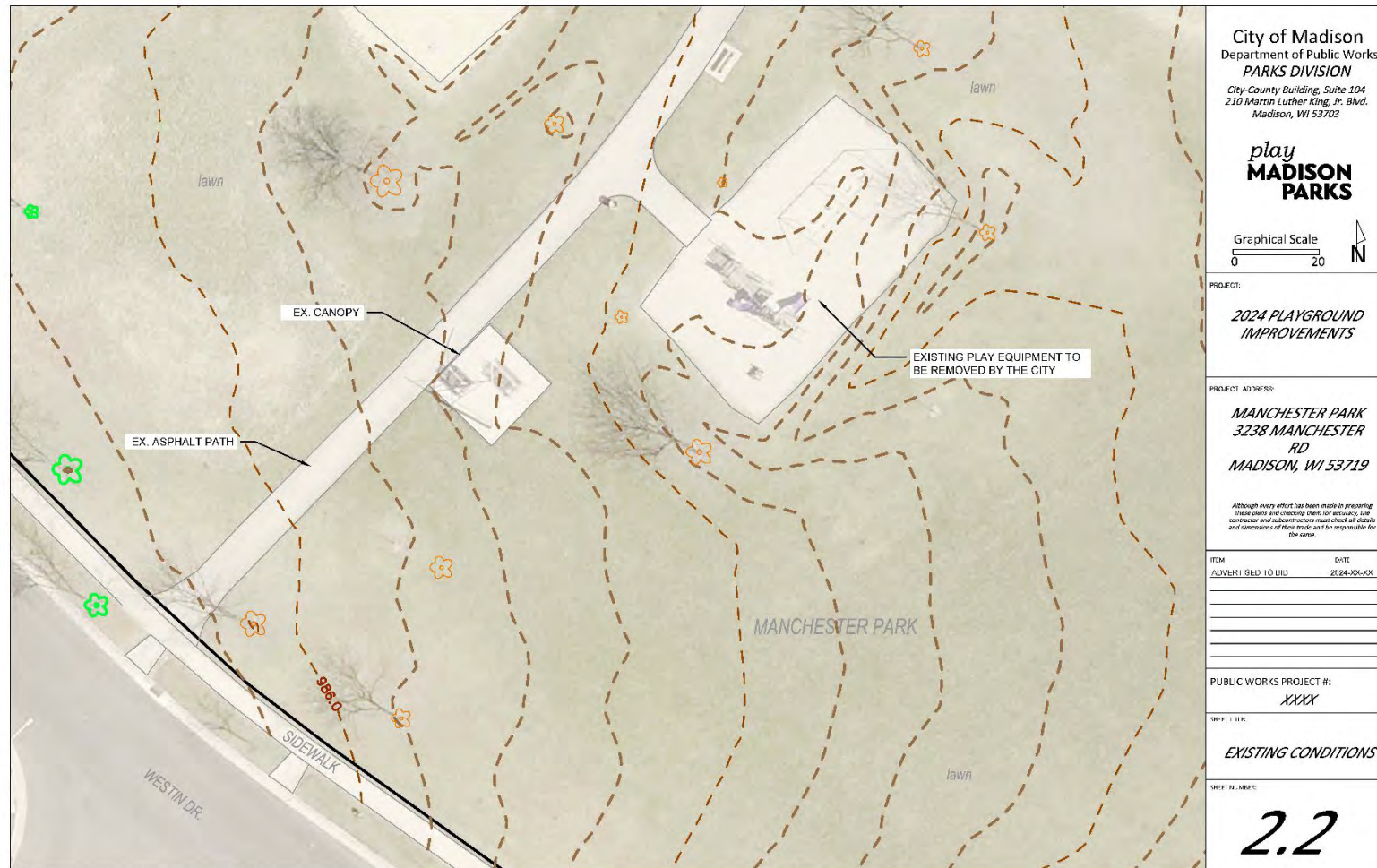


# MANCHESTER PARK- EXISTING PLAYGROUND EQUIPMENT

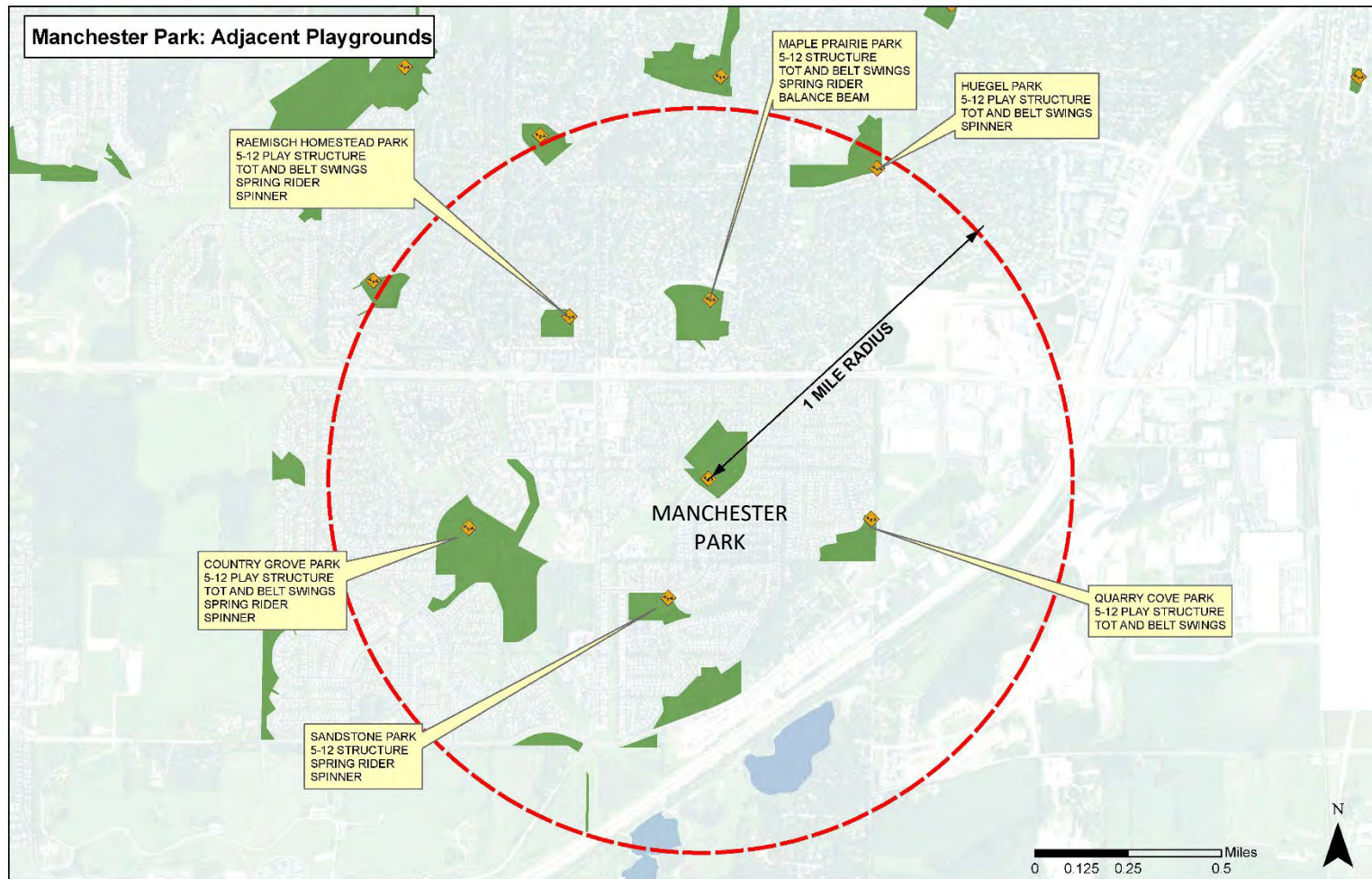


# MANCHESTER PARK- SITE PLAN



M:\Maps\parks\Manchester\2024 Playground\Design\2024 Manchester PG.dwg

# MANCHESTER PARK- ADJACENT PLAYGROUNDS



M:\Maps\Parks GIS\Parks\Manchester\Manchester Park Adjacent Playgrounds.mxd

1/23/2024

# City of Madison Playground Options

Age Range: 5-12 Years Old

**MADISON  
PARKS**

**Company: GameTime**



**Company: Burke**



# City of Madison Playground Options

Age Range: 5-12 Years Old

**Company: Little Tykes**



# City of Madison Playground Options

Age Range: 2-5 Years Old

## Company: GameTime



## Company: Burke



# City of Madison Playground Options

Age Range: 2-5 Years Old

Company: Little Tykes



# City of Madison Playground Options

## Nature Nooks





# City of Madison Playground Options

## Colors

### Post Colors



### Railing Colors



# City of Madison Playground Options Surfacing

## City of Madison Playground Surfacing Options Comparison

### Recycled Shredded Rubber

- Meets U.S. Access Board's ADA Accessibility Guidelines for Play Areas
- Meets CPSC fall height requirements
- Softer play surface material
- Provides alternative use for recycled tires
- Sandalwood/brown color-coated to reduce heat impact compared to non-coated black recycled rubber
- Higher initial cost, lower maintenance cost
- Needs to be topped off every 5 years depending on site conditions and use
- Non-biodegradable
- Thaws fast, playgrounds available throughout the year

### Engineered Wood Fiber Mulch

- Meets U.S. Access Board's ADA Accessibility Guidelines for Play Areas
- Meets CPSC fall height requirements
- Not as soft as recycled shredded rubber
- Created by the City from fallen trees and limbs that would otherwise be chipped for mulch
- More likely to get mold and mildew spores
- Lower initial cost, higher maintenance cost
- Needs to be topped off every 1 to 3 years depending on site conditions and use
- Biodegrades
- Thaws slowly, playground use limited during winter conditions



**Waltham Park- Rubber**



**Dudgeon School Park- Wood**

# City of Madison Playgrounds Fencing Example



**OCEAN ROAD PARK**

**Please plan on joining Madison Parks for the second meeting for the playground replacement for Manchester Park, where we will be reviewing and discussing proposed playground designs.**

**Next Playground Meeting (via Zoom): **TBD****

**Additional information related to this project is posted on the Parks Project Portal, here: <https://www.cityofmadison.com/parks/projects/manchester-park-playground-improvements>**

**Contact Sarah Grimalkin, project manager, with additional questions or comments.  
(608) 263-6850 or [sgrimalkin@cityofmadison.com](mailto:sgrimalkin@cityofmadison.com)**

**If the neighborhood is interested in fundraising, the goal must be established by: 3/1/2024  
85% of the total fundraising goal must be received by Madison Parks Foundation by: 5/1/2024**