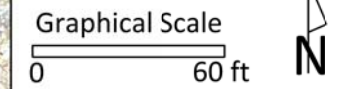




City of Madison
 Department of Public Works
PARKS DIVISION

City-County Building, Suite 104
 210 Martin Luther King, Jr. Blvd.
 Madison, WI 53703

play
**MADISON
 PARKS**



PROJECT:
**OLBRICH PARK
 MAINTENANCE
 SHED**

**OLBRICH PARK
 3527 ATWOOD AVE.
 MADISON, WI**

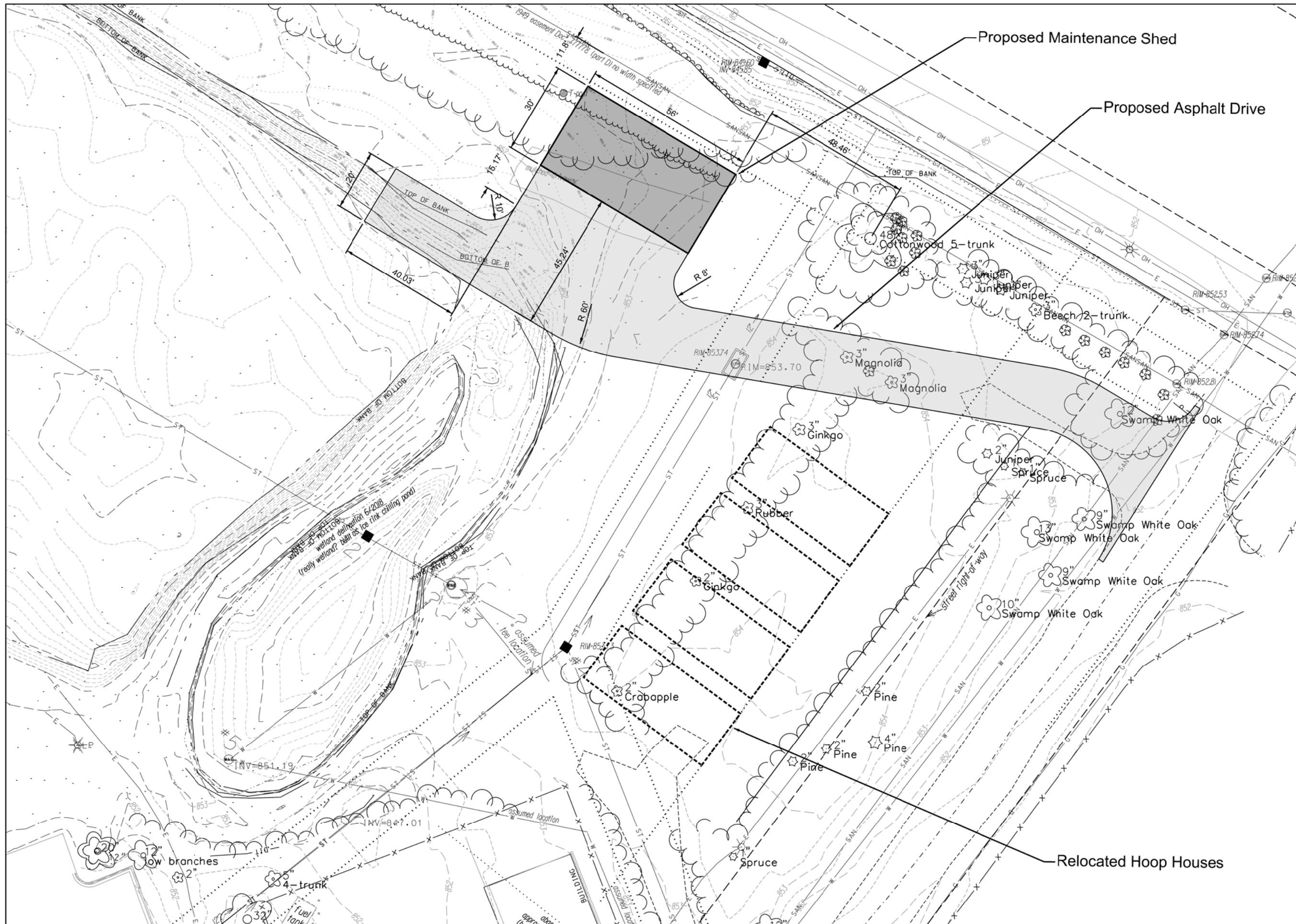
Although every effort has been made in preparing these plans and checking them for accuracy, the contractor and subcontractors must check all details and dimensions of their trade and be responsible for the same.

ITEM	DATE
Drawn by:	XX-XX-XXXX
Approved by:	XX-XX-XXXX

PUBLIC WORKS PROJECT #:
8225

SHEET TITLE:
PROJECT LOCATION

SHEET NUMBER:
L-1



City of Madison
 Department of Public Works
PARKS DIVISION
 City-County Building, Suite 104
 210 Martin Luther King, Jr. Blvd.
 Madison, WI 53703

play
**MADISON
 PARKS**



PROJECT:
**OLBRICH PARK
 MAINTENANCE
 SHED**

**OLBRICH PARK
 3527 ATWOOD AVE.
 MADISON, WI**

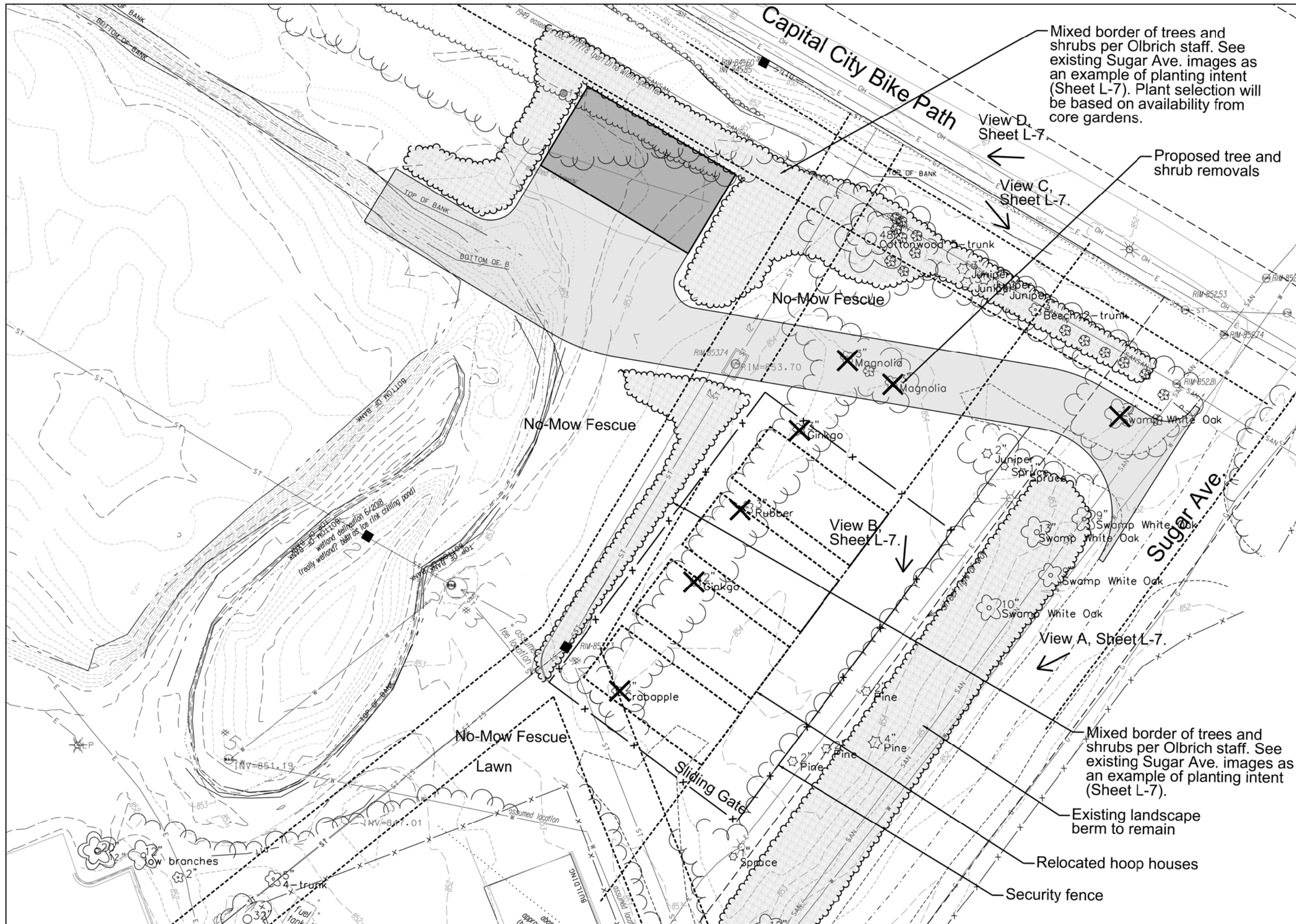
Although every effort has been made in preparing these plans and checking them for accuracy, the contractor and subcontractors must check all details and dimensions of their trade and be responsible for the same.

ITEM	DATE
Drawn by:	xx-xx-xxxx
Approved by:	xx-xx-xxxx

PUBLIC WORKS PROJECT #:
8225

SHEET TITLE:
SITE LAYOUT PLAN

SHEET NUMBER:
L-2

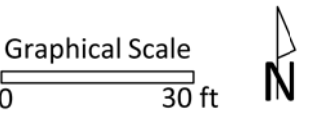


Mixed border of trees and shrubs per Olbrich staff. See existing Sugar Ave. images as an example of planting intent (Sheet L-7). Plant selection will be based on availability from core gardens.

Proposed tree and shrub removals

City of Madison
 Department of Public Works
PARKS DIVISION
 City-County Building, Suite 104
 210 Martin Luther King, Jr. Blvd.
 Madison, WI 53703

play
MADISON PARKS



PROJECT:
**OLBRICH PARK
 MAINTENANCE
 SHED**

**OLBRICH PARK
 3527 ATWOOD AVE.
 MADISON, WI**

Although every effort has been made in preparing these plans and checking them for accuracy, the contractor and subcontractors must check all details and dimensions of their trade and be responsible for the same.

ITEM	DATE
Drawn by:	xx-xx-xxxx
Approved by:	xx-xx-xxxx

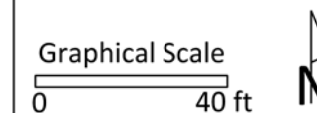
PUBLIC WORKS PROJECT #:
8225

SHEET TITLE:
**SITE LANDSCAPE
 PLAN**

SHEET NUMBER:
L-3

City of Madison
Department of Public Works
PARKS DIVISION

City-County Building, Suite 104
210 Martin Luther King, Jr. Blvd.
Madison, WI 53703



PROJECT:
*OLBRICH PARK
MAINTENANCE
SHED*

*OLBRICH PARK
3527 ATWOOD AVE.
MADISON, WI*

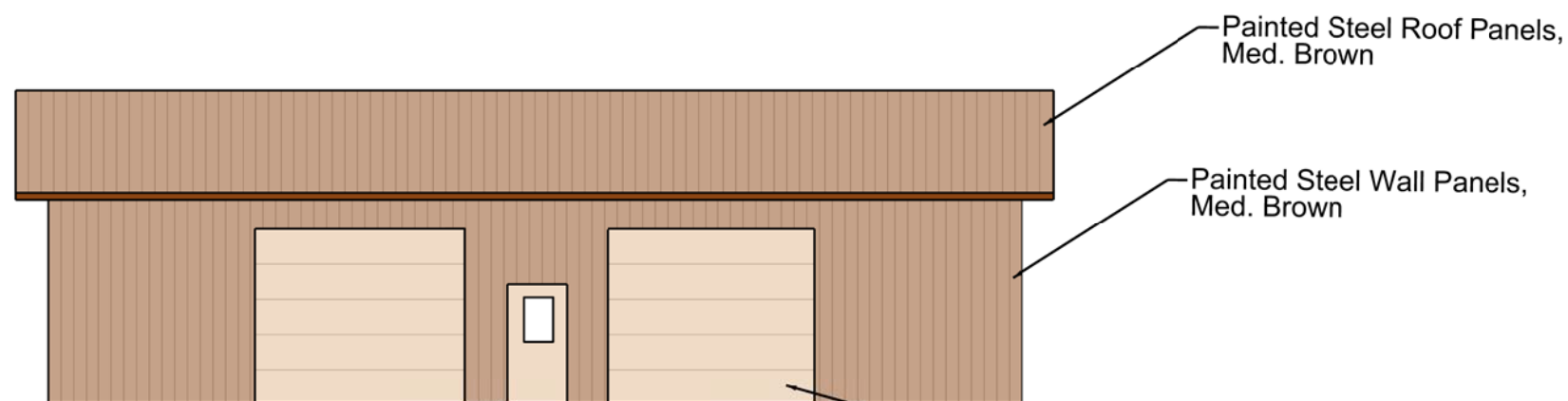
Although every effort has been made in preparing these plans and checking them for accuracy, the contractor and subcontractors must check all details and dimensions of their trade and be responsible for the same.

ITEM	DATE
Drawn by:	xx-xx-xxxx
Approved by:	xx-xx-xxxx

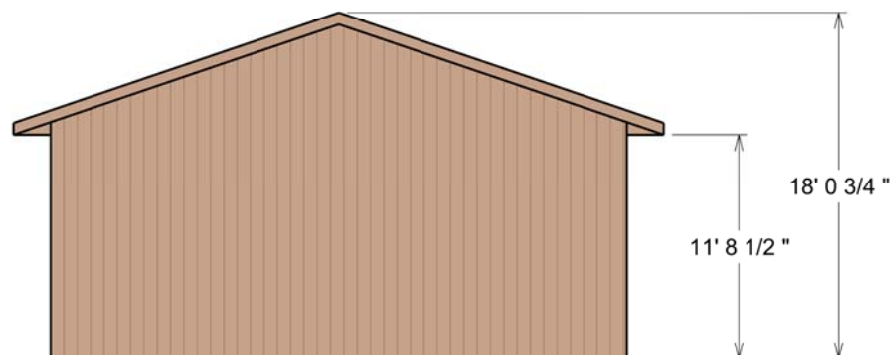
PUBLIC WORKS PROJECT #:
8225

SHEET TITLE:
SHED ELEVATIONS

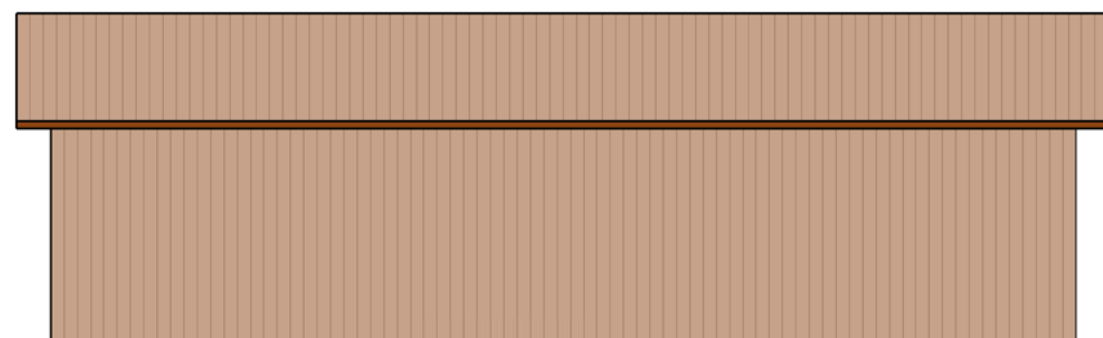
SHEET NUMBER:
L-4



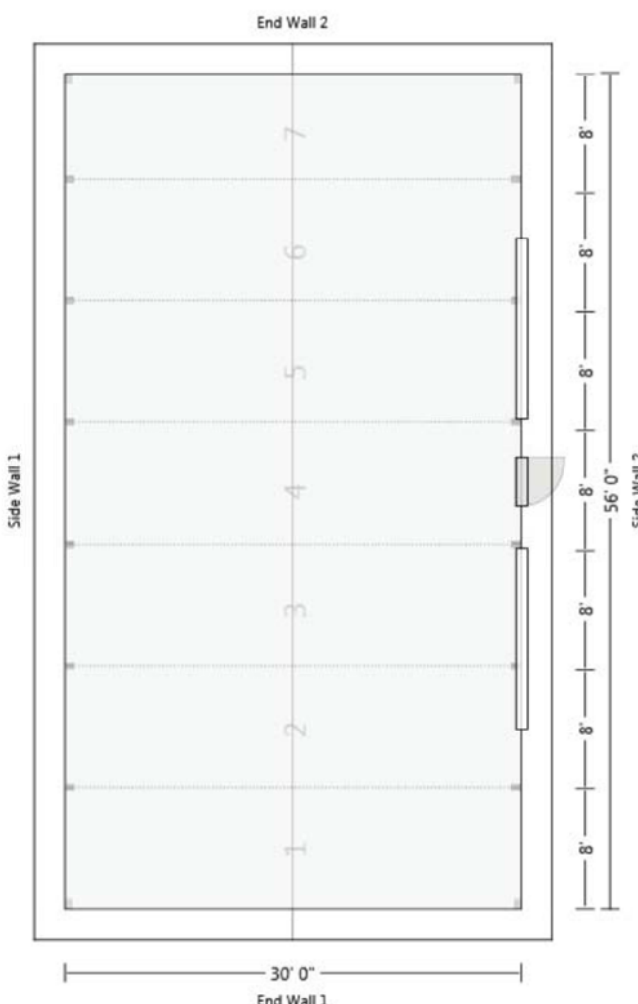
South Elevation



End Elevation



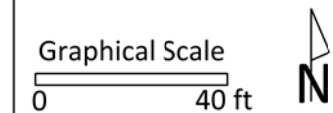
North Elevation



Floor Plan

City of Madison
 Department of Public Works
PARKS DIVISION
 City-County Building, Suite 104
 210 Martin Luther King, Jr. Blvd.
 Madison, WI 53703

play
**MADISON
 PARKS**



PROJECT:
*OLBRICH PARK
 MAINTENANCE
 SHED*

*OLBRICH PARK
 3527 ATWOOD AVE.
 MADISON, WI*

Although every effort has been made in preparing these plans and checking them for accuracy, the contractor and subcontractors must check all details and dimensions of their trade and be responsible for the same.

ITEM	DATE
Drawn by:	xx-xx-xxxx
Approved by:	xx-xx-xxxx

PUBLIC WORKS PROJECT #:
8225

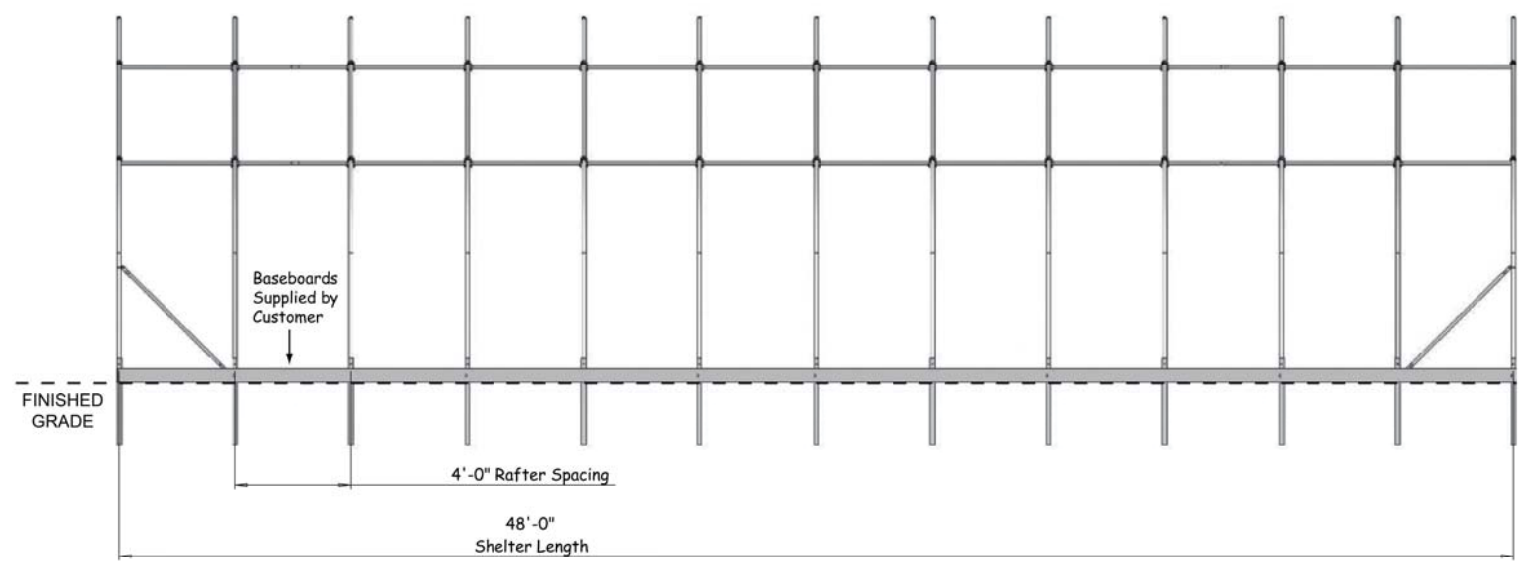
SHEET TITLE:
**HOOP HOUSE
 ELEVATIONS**

SHEET NUMBER:
L-5

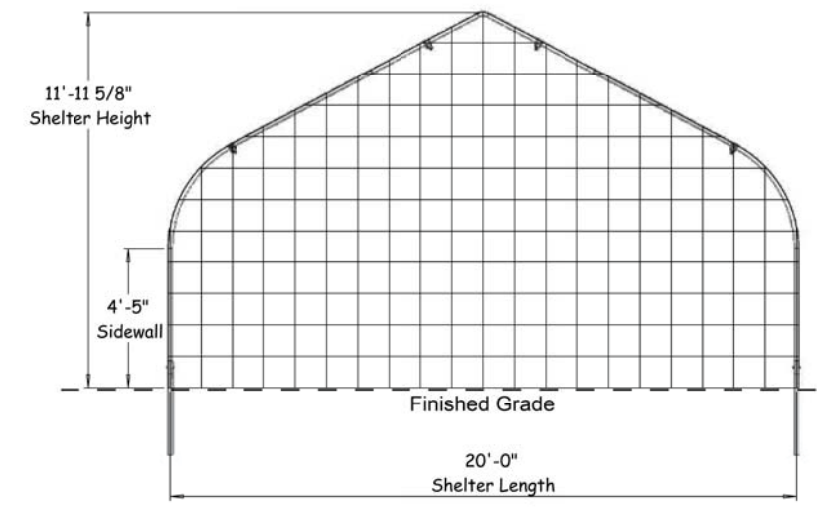


Hoop House Image

Materials-
 End Walls: Clear polycarbonate glazing panels
 Framework: Galvanized steel tubing.
 Intake Shutters: Aluminum
 Doors: Painted aluminum, white.



Hoop House Side Elevation



Hoop House End Elevation

City of Madison
Department of Public Works
PARKS DIVISION

City-County Building, Suite 104
210 Martin Luther King, Jr. Blvd.
Madison, WI 53703

play
**MADISON
PARKS**

Graphical Scale
0 40 ft



PROJECT:

*OLBRICH PARK
MAINTENANCE
SHED*

*OLBRICH PARK
3527 ATWOOD AVE.
MADISON, WI*

Although every effort has been made in preparing these plans and checking them for accuracy, the contractor and subcontractors must check all details and dimensions of their trade and be responsible for the same.

ITEM	DATE
Drawn by:	xx-xx-xxxx
Approved by:	xx-xx-xxxx

PUBLIC WORKS PROJECT #:
8225

SHEET TITLE:
SITE PHOTOS

SHEET NUMBER:
L-6



Existing Landscape Berm to Remain



Facing West
Existing Cottonwood to Remain




Existing Lawn Area



Existing Maintenance Shed

City of Madison
 Department of Public Works
PARKS DIVISION
 City-County Building, Suite 104
 210 Martin Luther King, Jr. Blvd.
 Madison, WI 53703

play
**MADISON
 PARKS**

Graphical Scale
 0 40 ft 

PROJECT:
*OLBRICH PARK
 MAINTENANCE
 SHED*

*OLBRICH PARK
 3527 ATWOOD AVE.
 MADISON, WI*

Although every effort has been made in preparing these plans and checking them for accuracy, the contractor and subcontractors must check all details and dimensions of their trade and be responsible for the same.

ITEM	DATE
Drawn by:	xx-xx-xxxx
Approved by:	xx-xx-xxxx

PUBLIC WORKS PROJECT #:
8225

SHEET TITLE:
*SUGAR AVE. | SITE
 PHOTOS*

SHEET NUMBER:
L-7



View A



View B



View C



View D

See Sheet L-3 for View Locations