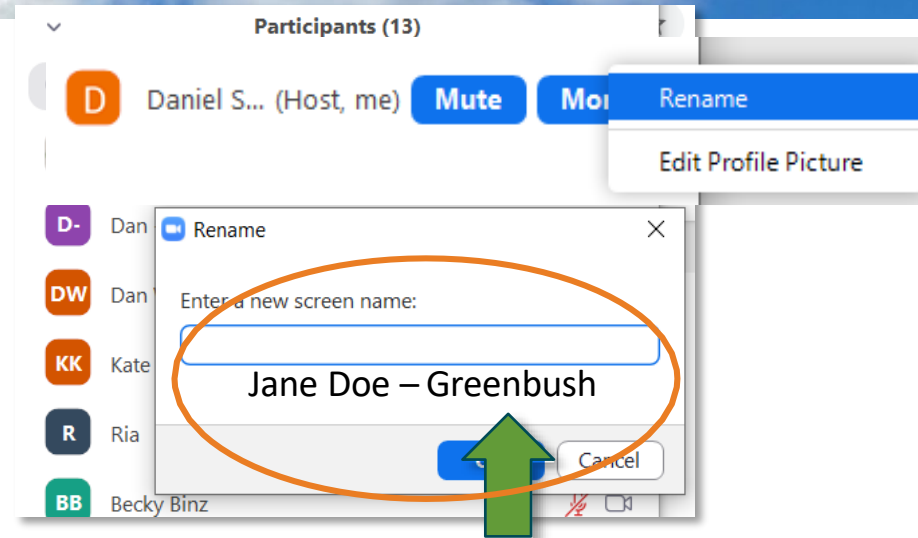
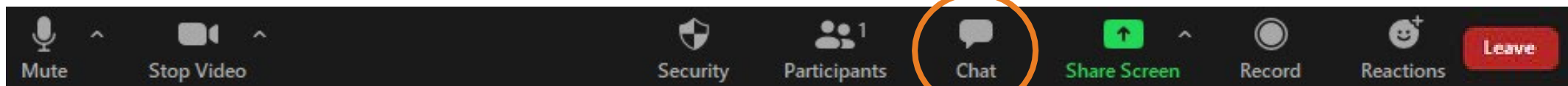


- Check to see your name is correct.
  - Please use the same name you used to register for the meeting
  - You can edit it if needed



## Meeting Logistics

- All participants will be muted during the presentation and unmuted for the discussion sessions.
- Please use the "Chat" window for **questions**, we will respond to as many as possible at the end of the initial presentation.
- This meeting will be recorded.





# MADISON PARKS

## Olbrich Park Nature Play Public Input Meeting #2

March 11, 2024  
Presented by Adam Kaniewski

**This meeting is being recorded.**

**It is a public record subject to disclosure.**

By continuing to be in the meeting, you are consenting to being recorded and consenting to this record being released to public record requestors.



**MADISON  
PARKS**

# Olbrich Park Nature Play Public Input Meeting #2

March 11, 2023  
Presented by Adam Kaniewski

# City Staff

- Adam Kaniewski, Park Planner, Project Manager
- Ann Freiwald, Parks Planning and Development Manager

# Meeting Agenda

1

- Background Information
- Project Timeline
- Site Information and Context

2

- Presentation of Draft Plan
- Precedent Images

3

- Public Input

# Background Information

- Madison Parks Playgrounds
  - Offers 190 playgrounds throughout the City
  - Parks maintains a playground replacement schedule for all of our playgrounds
  - Typical lifespan for post and platform playground equipment is 20-30 years
- Previous playground removed in summer of 2023
- After review of playgrounds in the vicinity, parks determined to replace with a nature play area rather than post and platform playground equipment



# Area Playgrounds





# Nature Play Benefits

**HEALTHY BABIES**  
Nature exposure for mothers can promote:

- BETTER FETAL GROWTH<sup>3</sup>
- HEALTHIER BIRTH WEIGHTS<sup>1,2,3</sup>

**HEALTHY EYES AND VITAMIN D LEVELS**  
Time spent in bright sunlight can:

- REDUCE NEARSIGHTEDNESS<sup>5,6,7</sup>
- INCREASE VITAMIN D LEVELS<sup>8</sup>

**NATURE CONTACT IS**  
especially beneficial for mothers of lower education and socio-economic levels<sup>2,3,4</sup>

**INCREASED PHYSICAL ACTIVITY**  
Access to parks and greenspace can foster:

- INCREASED PHYSICAL ACTIVITY<sup>11,12</sup>
- REDUCED RISK OF OBESITY<sup>13</sup>

**OUTDOOR PLAY**  
increases the likelihood that girls will remain active into adolescence<sup>9</sup>

**SOCIAL-EMOTIONAL WELLBEING**  
Learning in nature can support:

- IMPROVED RELATIONSHIP SKILLS<sup>17,20</sup>
- REDUCED STRESS<sup>17</sup>, ANGER<sup>18,19</sup> AND AGGRESSION<sup>18,19</sup>

Children are better able to cope with stress when they live near trees and other greenery.<sup>15,16</sup>

**HOW TO CREATE NATURE CHAMPIONS:**

- Provide fun, hands-on nature experiences<sup>9</sup>
- Share your love of the outdoors with children<sup>4,5</sup>
- Have kids note 3 good things in nature everyday to improve their connection to nature<sup>6</sup>
- Take learning outside<sup>10,11</sup>
- Repeat!<sup>6,7</sup>

Meaningful, positive experiences in nature guide children, youth and adults toward care for nature.<sup>4</sup>

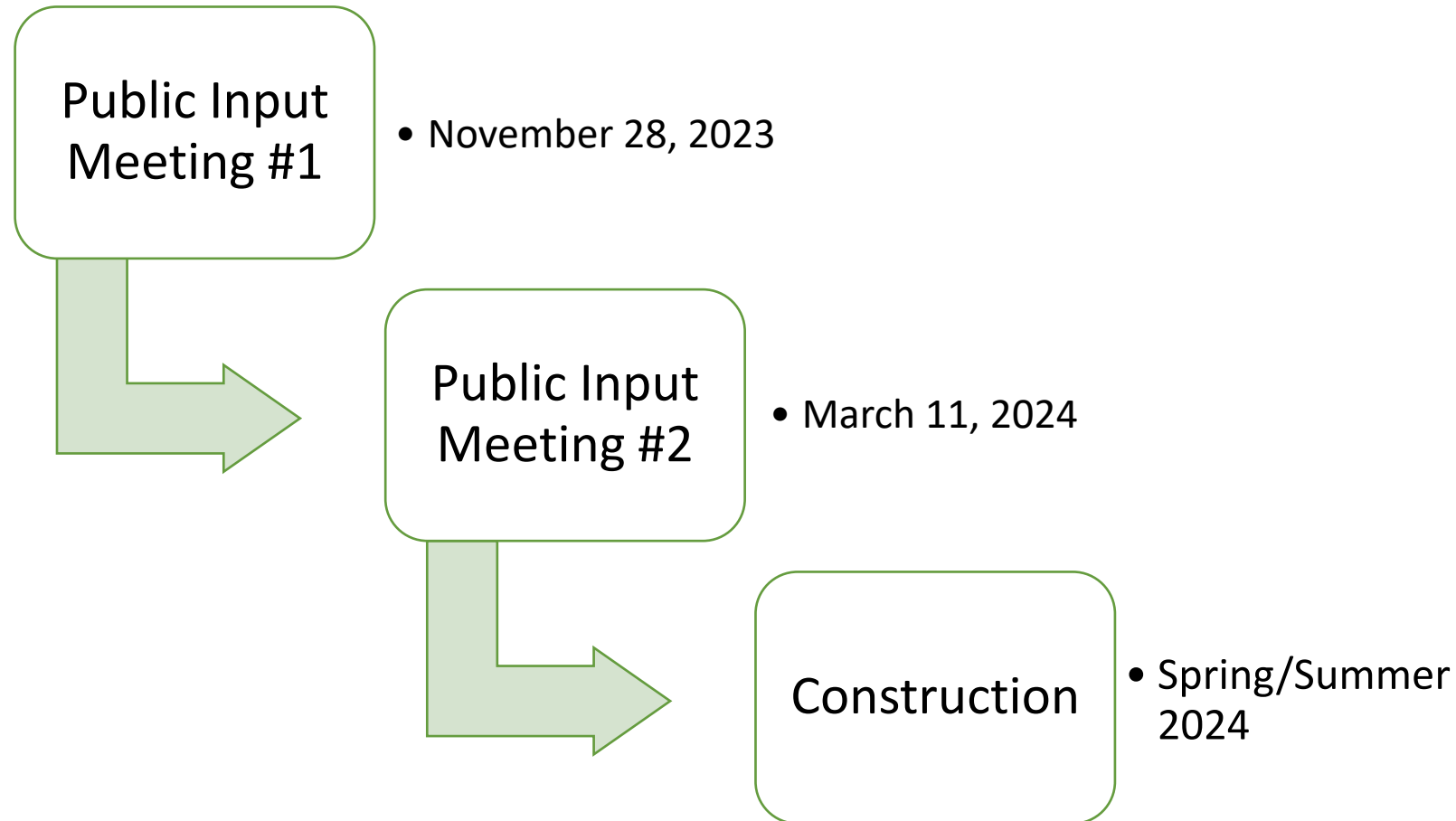
Time in nature during childhood and role models who care for nature are the two biggest factors that contribute to environmental stewardship in adulthood.<sup>4,5</sup>

**THE BENEFITS OF TIME IN NATURE:**  
Time outdoors in nature contributes to children's care for nature while supporting their healthy development.<sup>2,10,13</sup>

- BETTER SOCIAL SKILLS<sup>2,13</sup>
- ENHANCED HEALTH<sup>2,13</sup>
- INCREASED SELF ESTEEM<sup>2,13</sup>
- IMPROVED GRADES<sup>10,11</sup>
- PRO-ENVIRONMENT BEHAVIORS<sup>1,2,3,4,5,10,13</sup>
- STRONGER EMOTIONAL CONNECTIONS TO PEOPLE AND NATURE<sup>6,7,8,12</sup>

Images from Children & Nature Network (<https://www.childrenandnature.org/resources/category/benefits-of-nature/>)

# Project Timeline



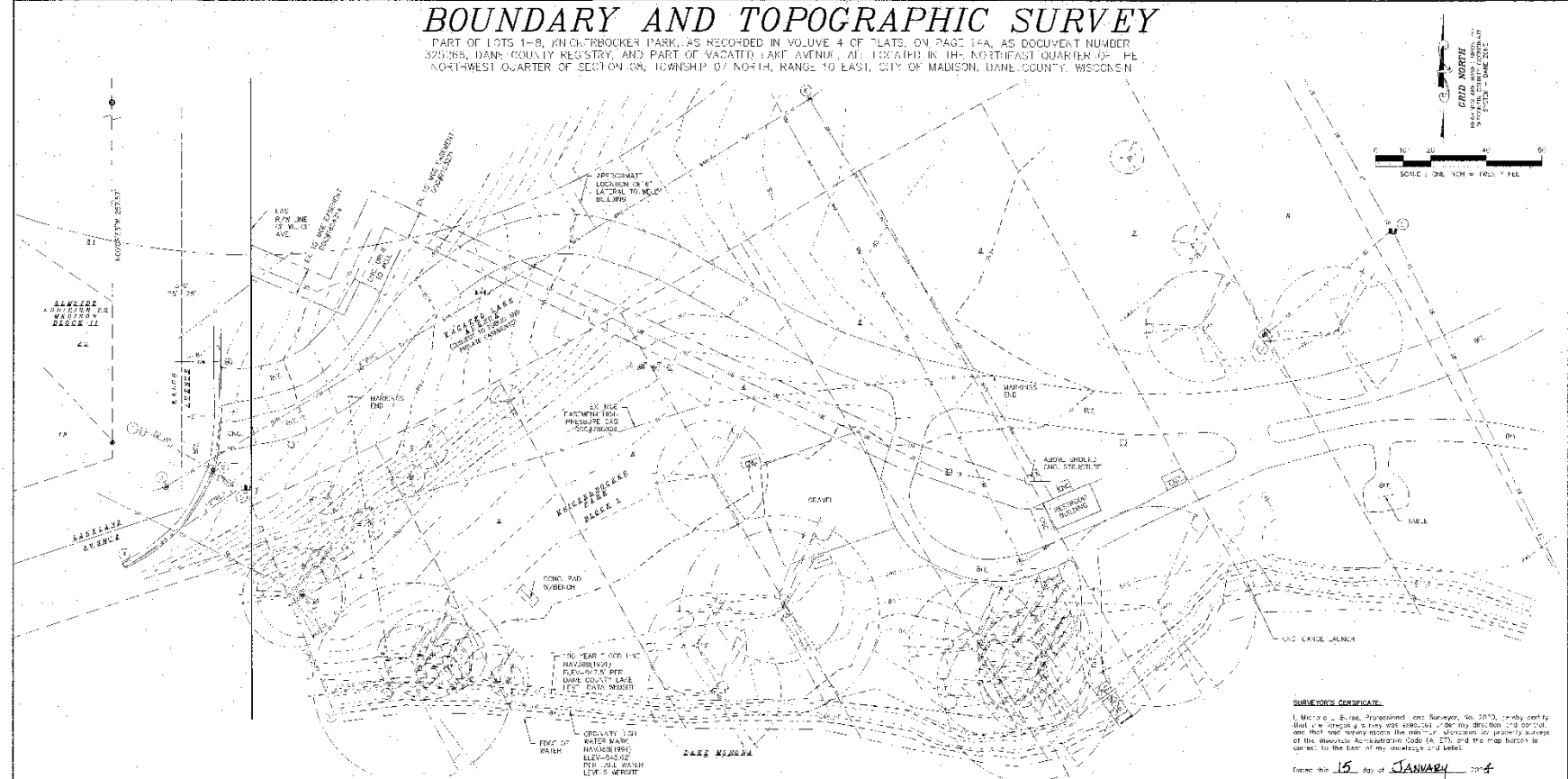
# Site Photos



# Existing Conditions

## BOUNDARY AND TOPOGRAPHIC SURVEY

PART OF LOTS 1-8, HIGH-TROCKER PARK, AS RECORDED IN VOLUME 4 OF PLATS, ON PAGE 144, AS DOCUMENT NUMBER 329268, DANE COUNTY REGISTRY, AND PART OF VACATED LAKE AVENUE, ALIQUOT IN THE NORTH-EAST QUARTER OF THE NORTH-WEST QUARTER OF SECTION 09, TOWNSHIP 07 NORTH, RANGE 10 EAST, CITY OF MADISON, DANE COUNTY, WISCONSIN



**LEGEND**

● 1/4" IRON PIPE FOUND	R BY PEDestal
● SQUARE IRON FOUND	⊕ ELECTRIC PEDESTAL
○ CIRCULAR UTILITY BOX	⊕ UTILITY POLE
— GAS PIPE	⊕ SANITARY SEWER
— SANITARY SEWER	⊕ TELEPHONE PEDESTAL
— STORM SEWER	⊕ FIRE HYDRANT
— BURIED SHIPPIING	⊕ GAS
— BURIED ELECTRIC	⊕ CITY WATER
— BURIED CABLE ACCESS TO FURNACE LINE	⊕ STORM SEWER MANHOLE
— BURIED TRIP POINT	⊕ ROUND CATCH BASIN
— WATER VALVE	⊕ STORM SEWER STRUCTURE
— GAS VALVE	⊕ SANITARY SEWER MANHOLE
⊕ GAS METER	⊕ BIRDAWNING PAINTMENT
⊕ DECORATIVE TRIM (GAS & ELECTRIC)	⊕ CONCRETE PAVEMENT
⊕ CONCRETE TRAIL (GAS & ELECTRIC)	⊕ MARKERS RECORDED AS

Distances are measured to the nearest hundredth of a foot. Bearings are measured to the nearest tenth of a foot.

**STORM SEWER AND SANITARY SEWER ELEVATION TABLE**

NUMBER	SYMBOL	ELEVATION	ELEVATION	ELEVATION	DESCRIPTION
1	STORM SEWER CURB INLET	871.48	SE	867.16	STORM SEWER CURB INLET
2	STORM SEWER CURB INLET	872.41	W	869.87	STORM SEWER CURB INLET
3	SANITARY SEWER MANHOLE	871.41	W	862.75	SANITARY SEWER MANHOLE
4	STORM SEWER CURB INLET	871.27	W	868.20	STORM SEWER CURB INLET
5	STORM SEWER STRUCTURE	870.50	PER	868.78	STORM SEWER STRUCTURE
6	SANITARY SEWER MANHOLE	862.58	W	849.21	SANITARY SEWER MANHOLE
7	STORM SEWER CATCH BASIN	848.96	NE	846.00	STORM SEWER CATCH BASIN
8	STORM SEWER SQUARE CATCH BASIN	848.89	PER	842.90	STORM SEWER SQUARE CATCH BASIN
9	STORM SEWER MANHOLE	848.89	NE	846.99	STORM SEWER MANHOLE
10	END OF PIPE	848.89	SE	846.66	END OF PIPE
11	END OF PIPE	848.43	SE	846.43	END OF PIPE
12	END OF PIPE	844.90	SE	844.90	END OF PIPE

- NOTES:**
- Points as specifically stated or shown on this map, with survey lines not shown to reflect any of the following which may be applicable to the subject premises: easements, building setback lines, restrictive covenants, dedications, party lines, zoning or other local regulations and any other facts which may be noted on the plat which may affect the survey and performance of the work.
  - The client has been notified as a part of this survey to check all data concerning easements, title, depth, location, capacity or location of any utility or manhole/public service facility. For information recording these utilities or facilities, please contact the appropriate agencies.
  - Lines of field work 12' x 12' and 12' x 12'.
  - All 2" offsets and setbacks and other full requirements on one adjacent to the site are not necessarily shown hereon.
  - All trees, bushes and ground cover on the site may not necessarily be shown hereon.
  - Routing of water or other fluid from one structure to another from the City of Madison, including backflow prevention, including installed by City of Madison, is the responsibility of the owner. Additional utility/structure may be shown on all the instruments were made by licensed utilities. Before construction the performer's contact Diggers Hotline.
  - Elevations are based upon 1429.88 (1984) datum. Elevation points provided by City of Madison.

**SURVEYOR'S CERTIFICATE:**

I, Michelle L. Burse, Registered Land Surveyor, No. 2072, hereby certify that I have personally supervised and conducted this survey in accordance with the provisions of the Wisconsin Act-Statutes Code (S. 177) and the map hereon is correct to the best of my knowledge and belief.

Dated this 15 day of JANUARY 2014

Signature: *Michelle L. Burse*  
 Michelle L. Burse, P.L.S., No. 2072



SURVEYED FOR:  
CITY OF MADISON

SURVEYED BY:  
**Burse**  
surveying & engineering, Inc.  
3201 International Lane, Suite 10,  
Madison, WI 53704 608.750.9765  
Fax: 608.750.9766  
email: mlaburse@burse-eng.com  
www.burse-surveying.com

**DIGGERS HOTLINE**  
 Dial 800 or (800) 242-8511  
 www.DiggersHotline.com

# Playground Safety Standards

- **National Recreation and Park Association**
- **Consumer Product Safety Commission (CPSC)**
- **American Society for Testing and Materials (ASTM)**
- **American National Standards Institute (ANSI)**

# Public Meeting #1 Feedback

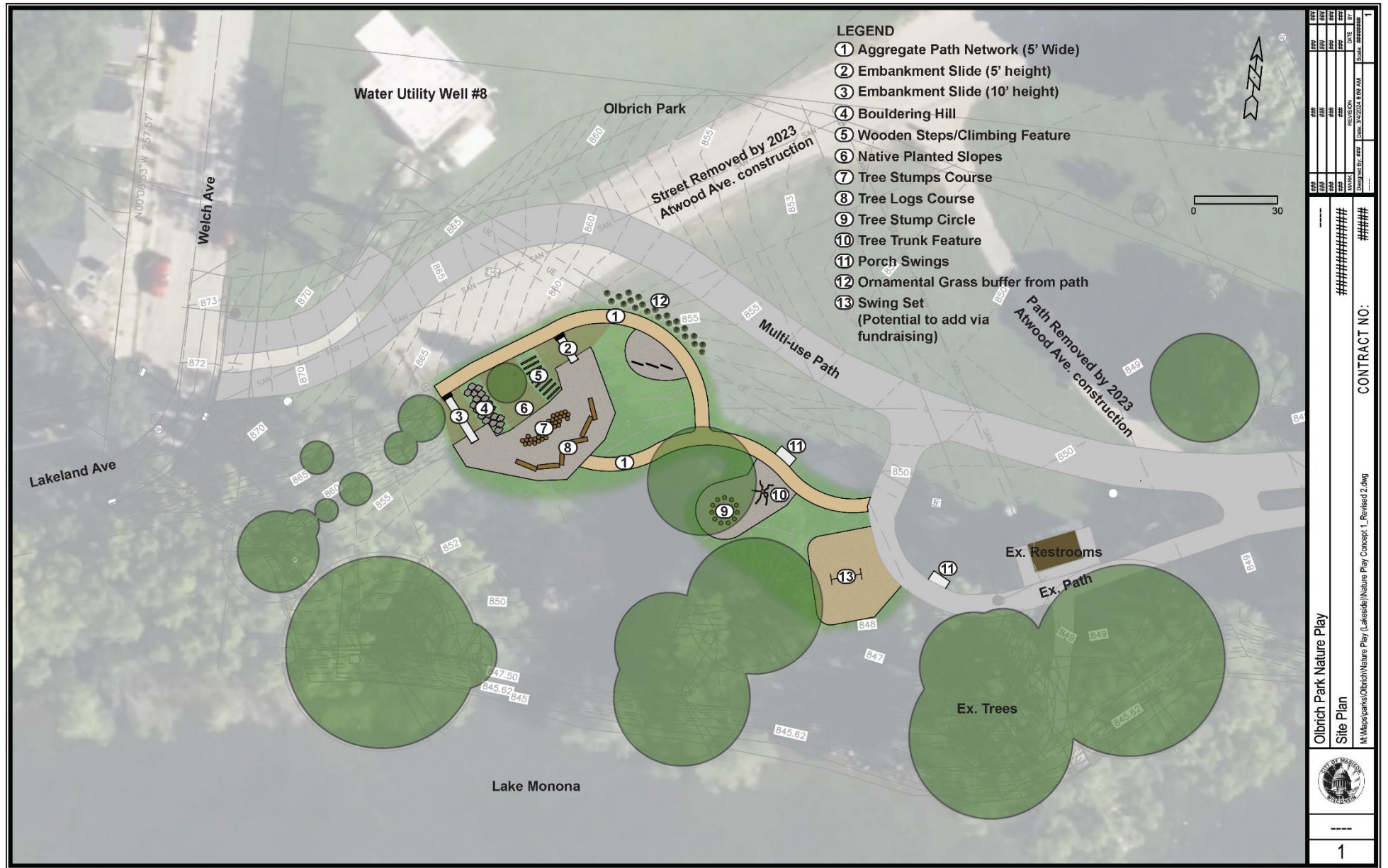
- Preference for Plan #1
- Desire for a less extensive path system
- Do not want “loose parts” containers
- Do not want sand box
- Utilize areas within existing tree canopy
- Desire for “tunnel-like” feature

Plan #1



Plan #2

## Site Plan



# Site Plan

**LEGEND**

- ① Aggregate Path Network (5' Wide)
- ② Embankment Slide (5' height)
- ③ Embankment Slide (10' height)
- ④ Bouldering Hill
- ⑤ Wooden Steps/Climbing Feature
- ⑥ Native Planted Slopes
- ⑦ Tree Stumps Course
- ⑧ Tree Logs Course
- ⑨ Tree Stump Circle
- ⑩ Tree Trunk Feature
- ⑪ Porch Swings
- ⑫ Ornamental Grass buffer from path
- ⑬ Swing Set (Potential to add via fundraising)

Path Remove  
Atwood A





# Embankment Slides



# Precedent Images



Requires  
Additional  
Safety  
Surfacing

# Precedent Images

Porch Swing



# Public Input

- Please raise your hand if you wish to speak and only unmute and speak when called upon.
- Please be respectful to others with your comments.
- If you do not feel comfortable speaking, please type your question or comment in the chat.



# Next Steps

- Final Design Plan
  - Staff will prepare a final plan based on feedback received
  - The final plan will be posted on the project website
- Construction
  - Time frames may be dictated by equipment manufacturing times (slides) and ability to procure appropriate natural items (logs, boulders)
  - Will post timeline updates to project website when more information is available
- Project Contact
  - Adam Kaniewski – (608) 261-4281 or [akaniewski@cityofmadison.com](mailto:akaniewski@cityofmadison.com)
- Project Website
  - <https://www.cityofmadison.com/parks/projects/olbrich-park-nature-play-area>

Thank you!