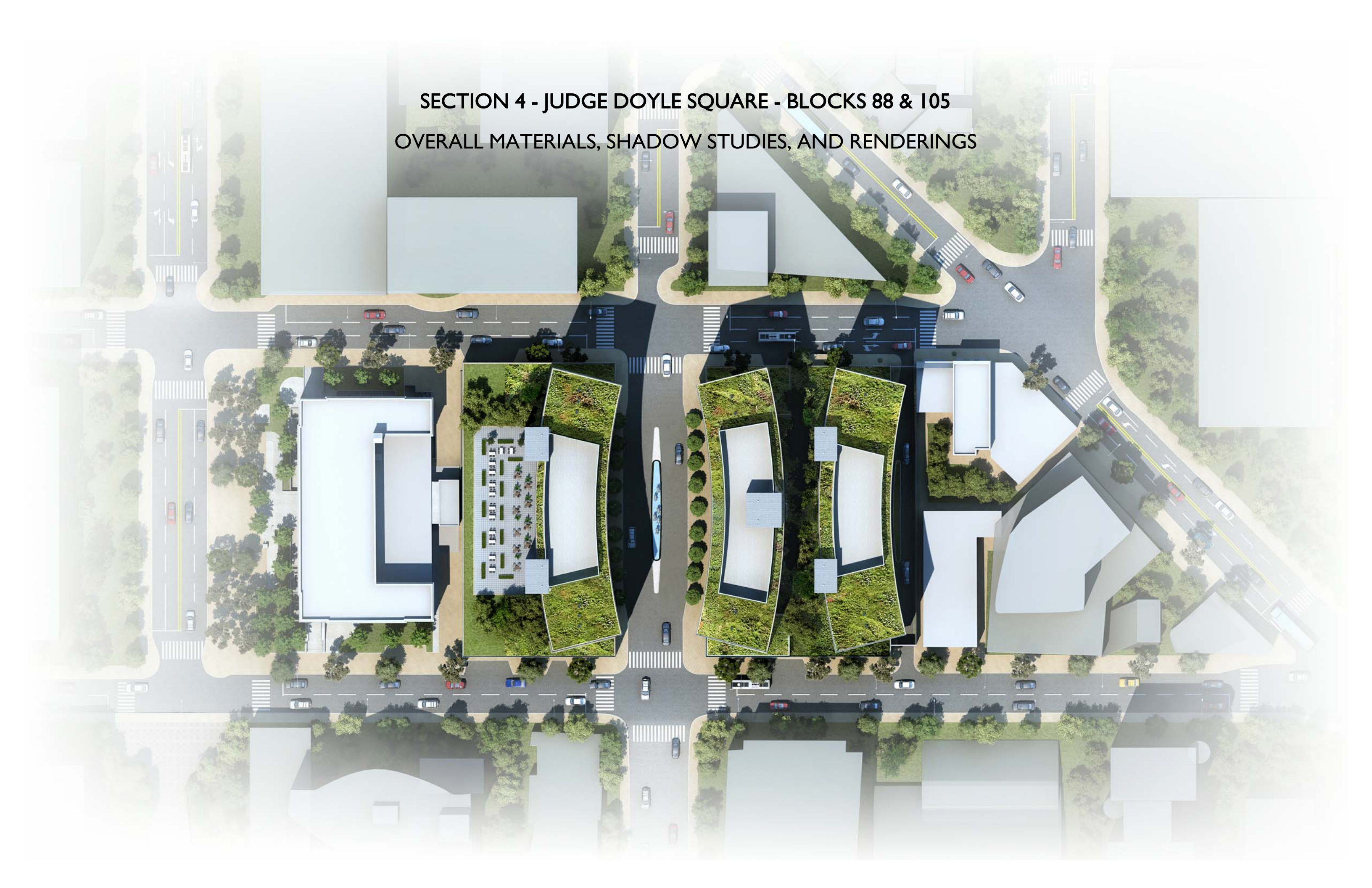
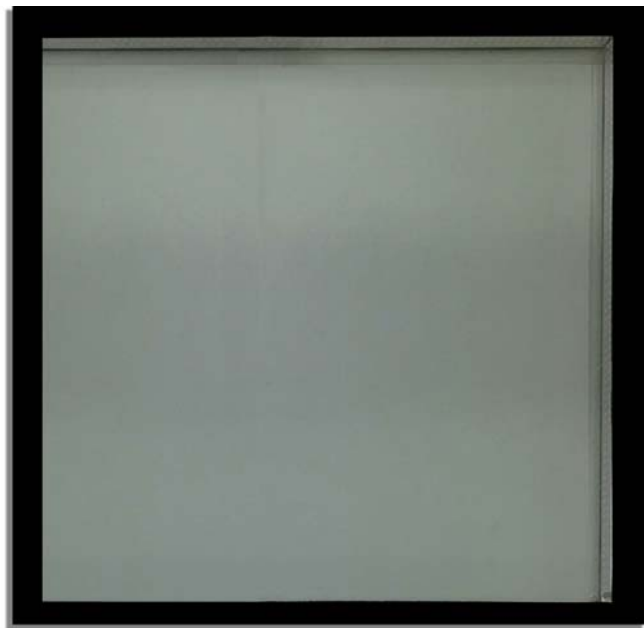


SECTION 4 - JUDGE DOYLE SQUARE - BLOCKS 88 & 105
OVERALL MATERIALS, SHADOW STUDIES, AND RENDERINGS



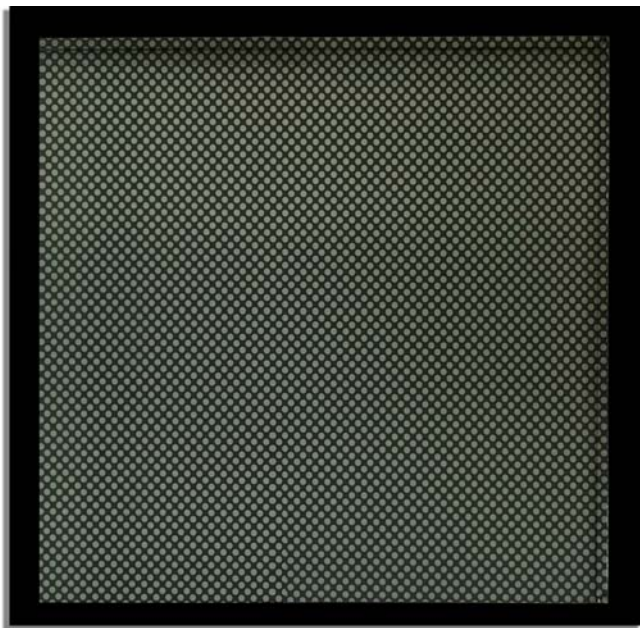
- EXTERIOR GLAZING



INSULATING VISION GLASS (VRE1-46)
SPANDREL GLASS TO MATCH



FROSTED GLASS - FOG GRAY (V1087)



SILKSCREEN GLASS - SUBDUED GRAY
60% COVERAGE (V903)

- ALUMINUM TRIM



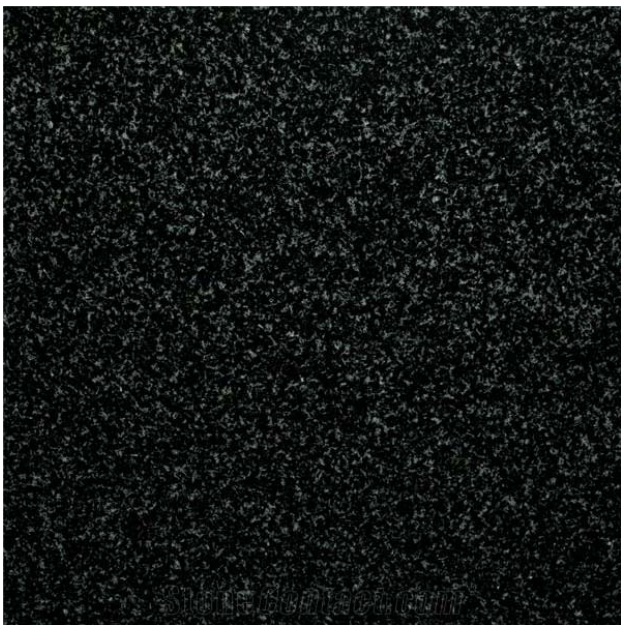
BRUSHED ALUMINUM

- STONE SCREEN WALL SYSTEM



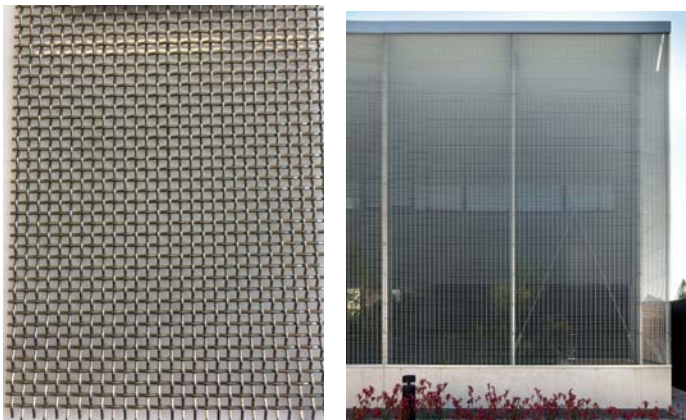
INDIANA LIMESTONE - STANDARD BUFF

- WINDOW CURB / SILL

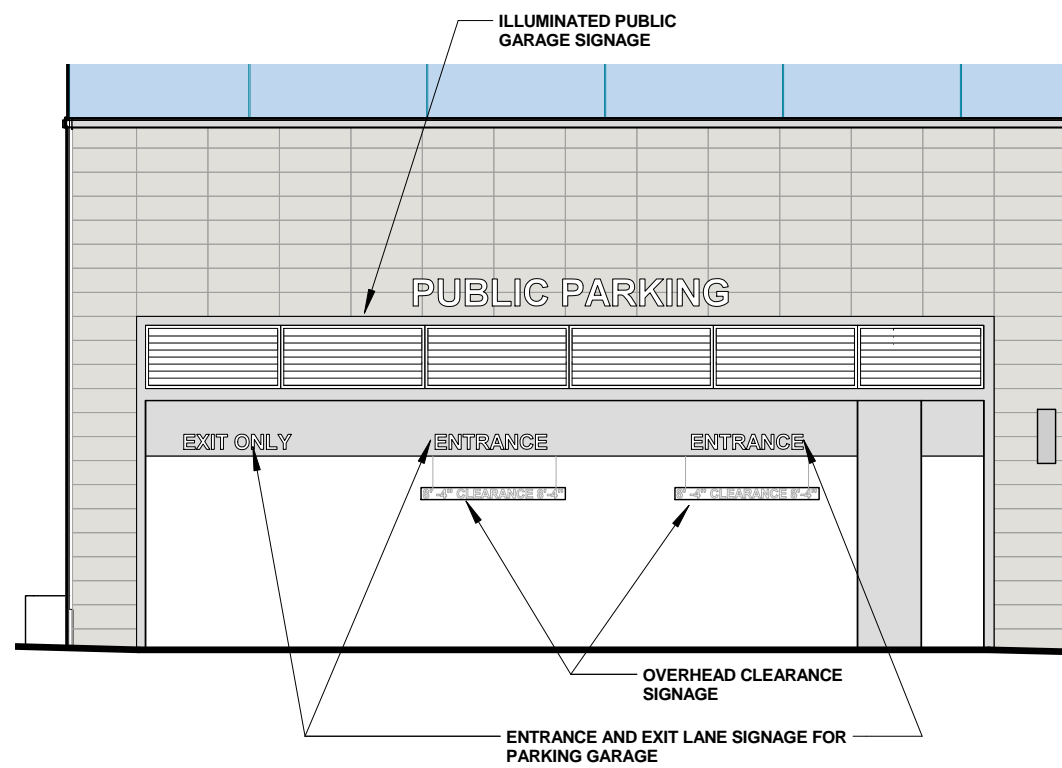


BLACK GRANITE

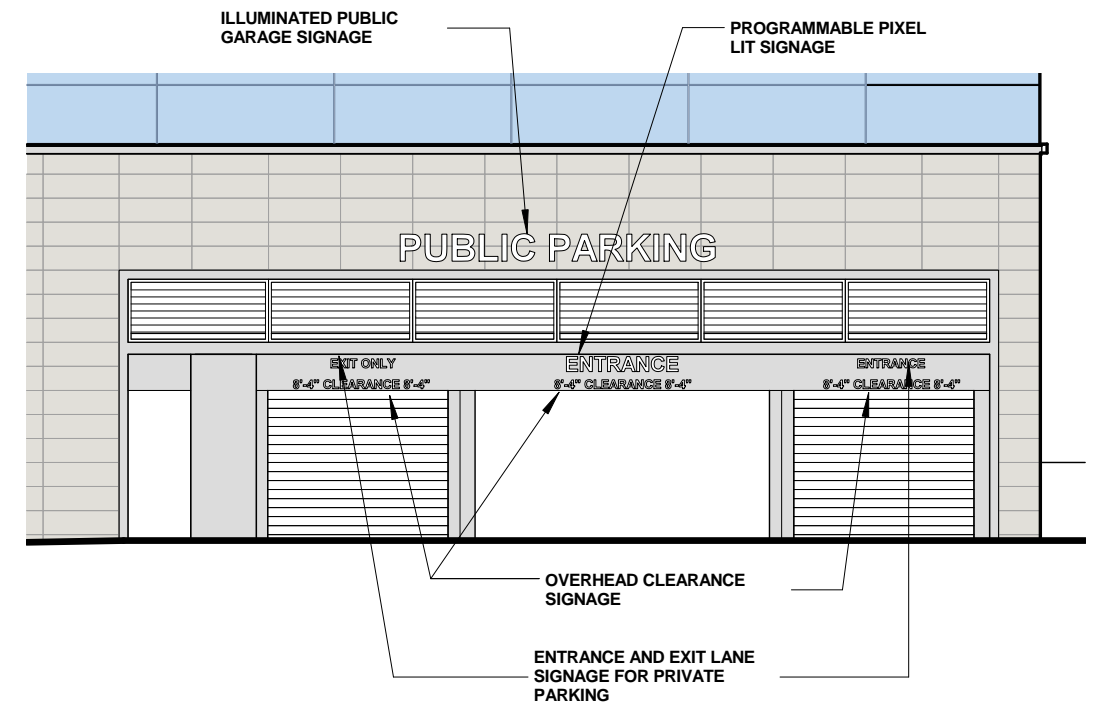
- ALUMINUM SCREEN WALL



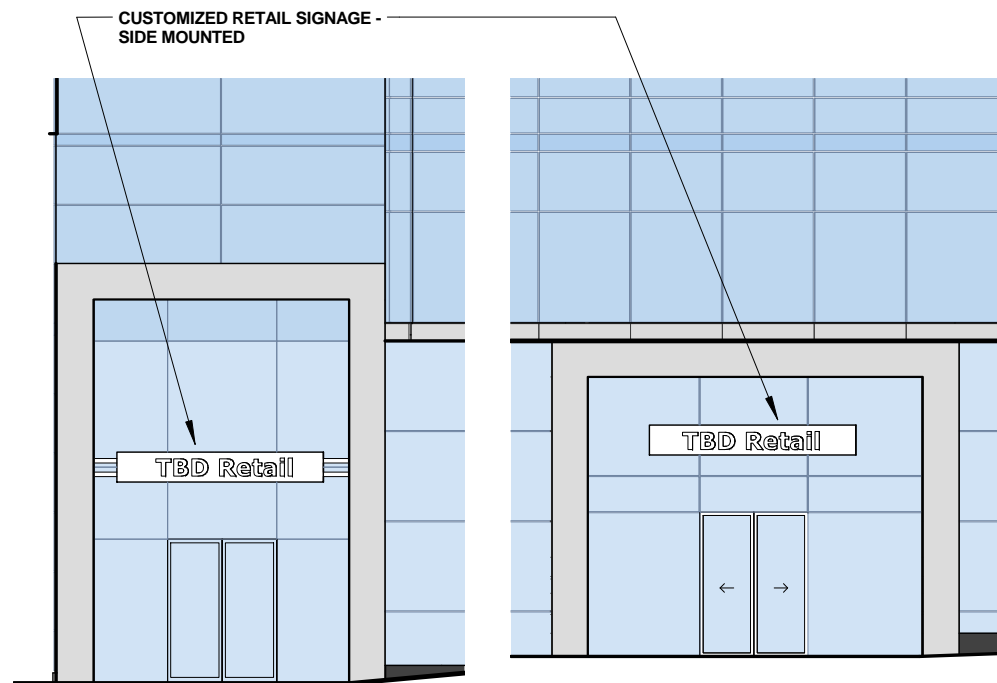
MECHANICAL SCREEN WALL @ ROOF



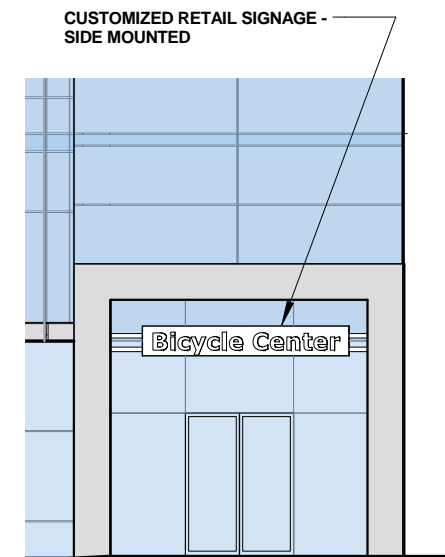
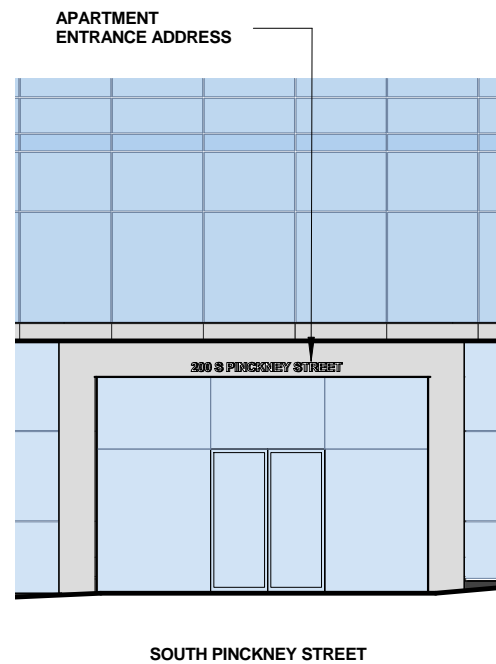
WILSON STREET GRAPHIC SIGNAGE

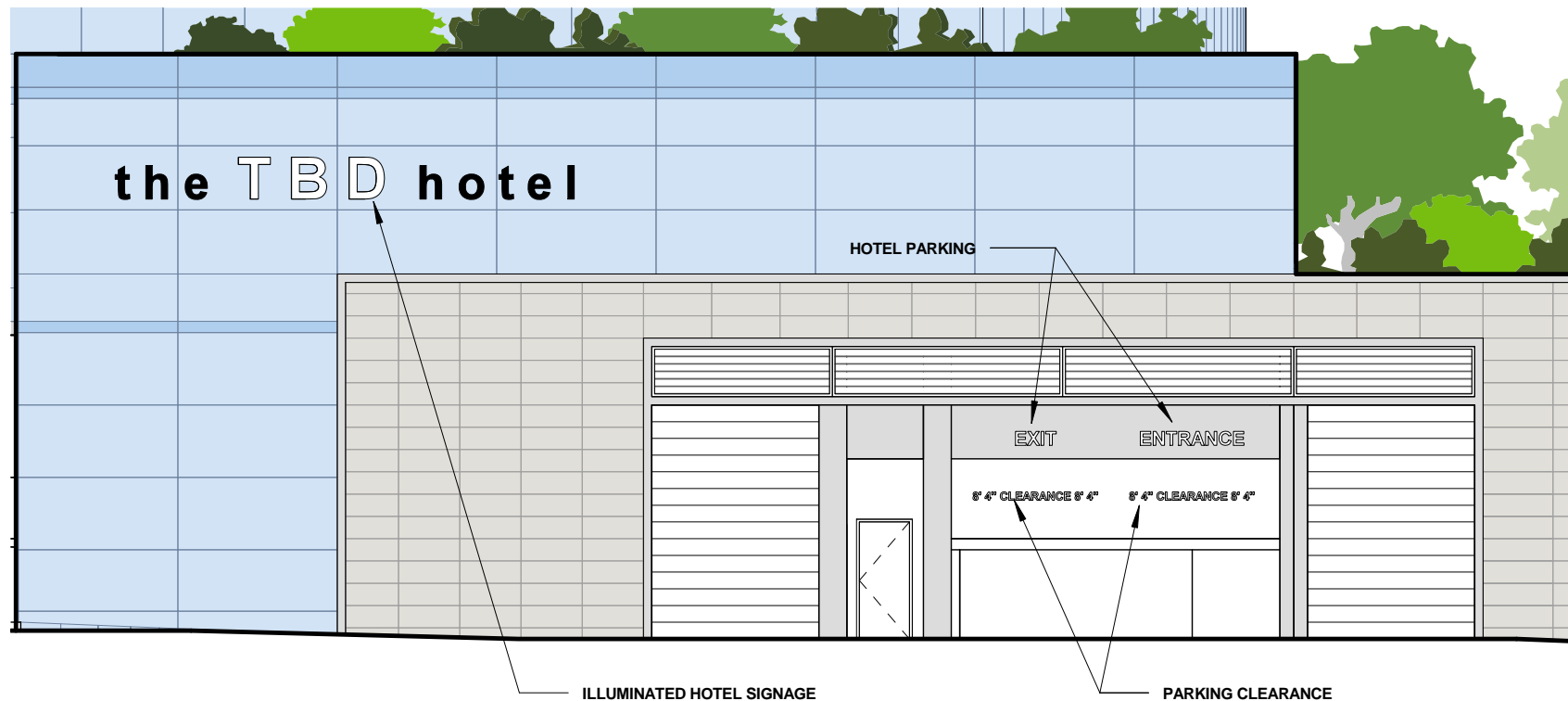


DOTY STREET GRAPHIC SIGNAGE

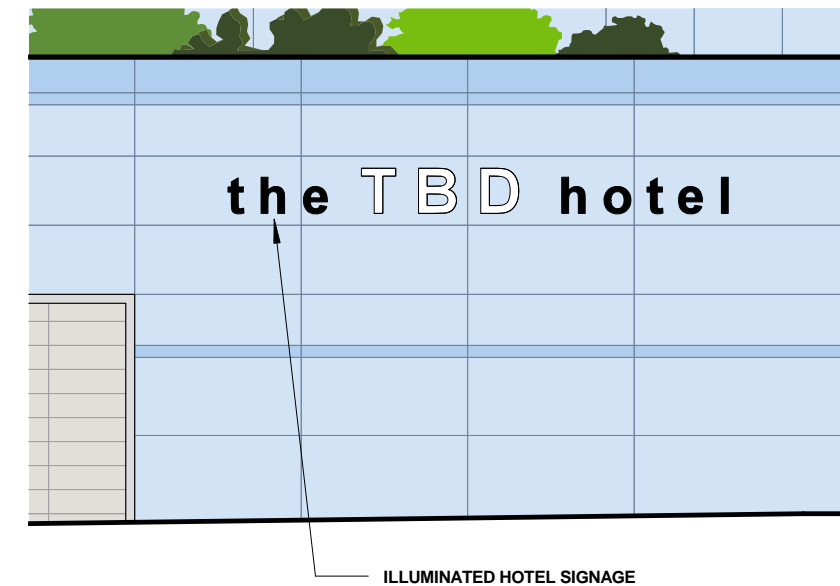


PINCKNEY STREET GRAPHIC SIGNAGE

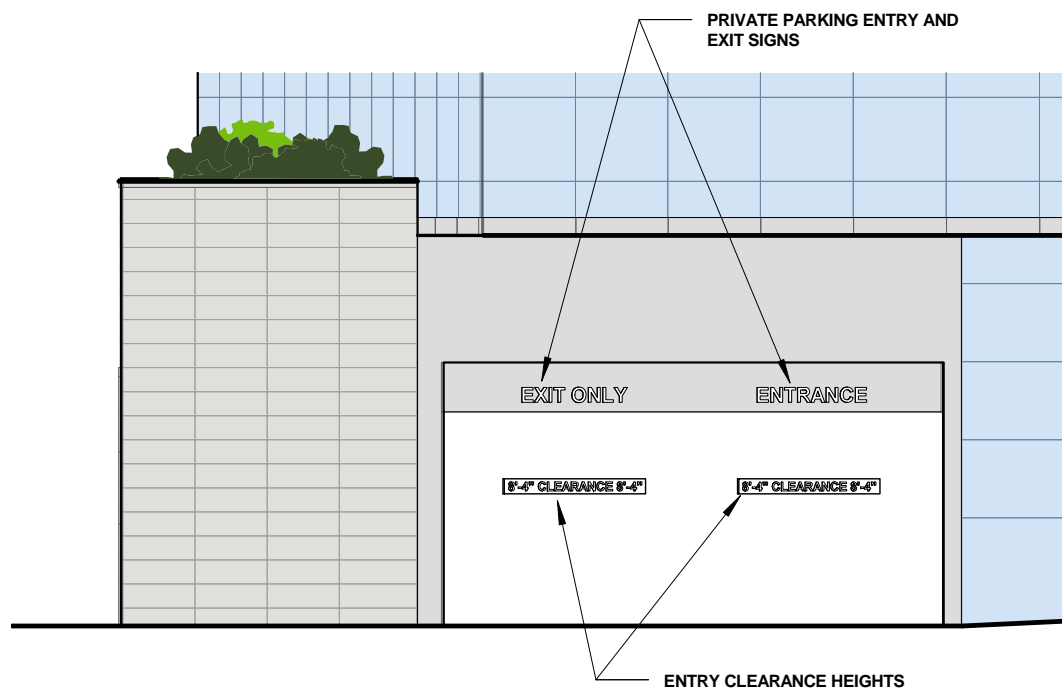




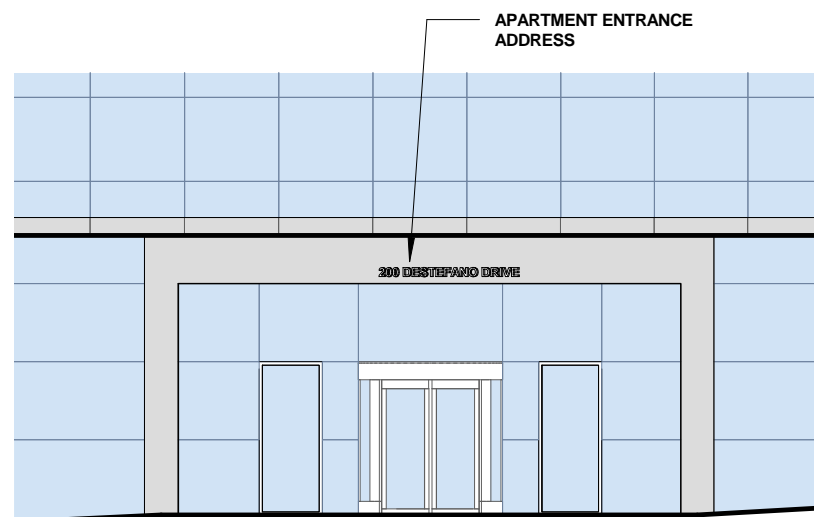
WILSON STREET GRAPHIC
SIGNAGE

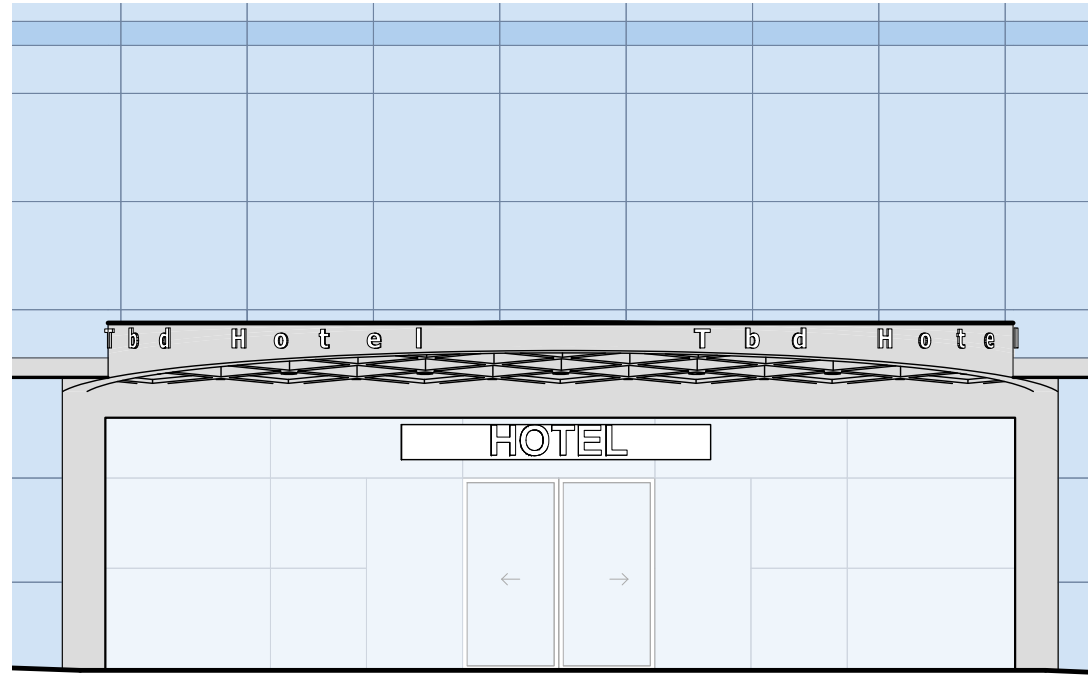


DOTY STREET GRAPHIC
SIGNAGE

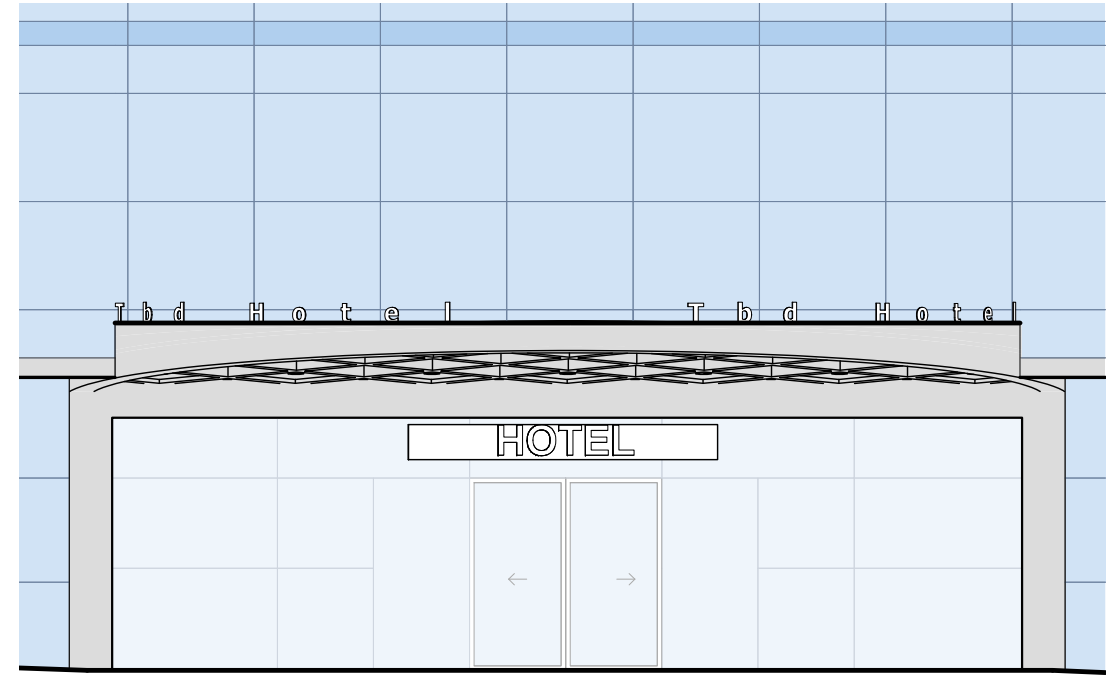


NEW ENTRY GRAPHIC
SIGNAGE

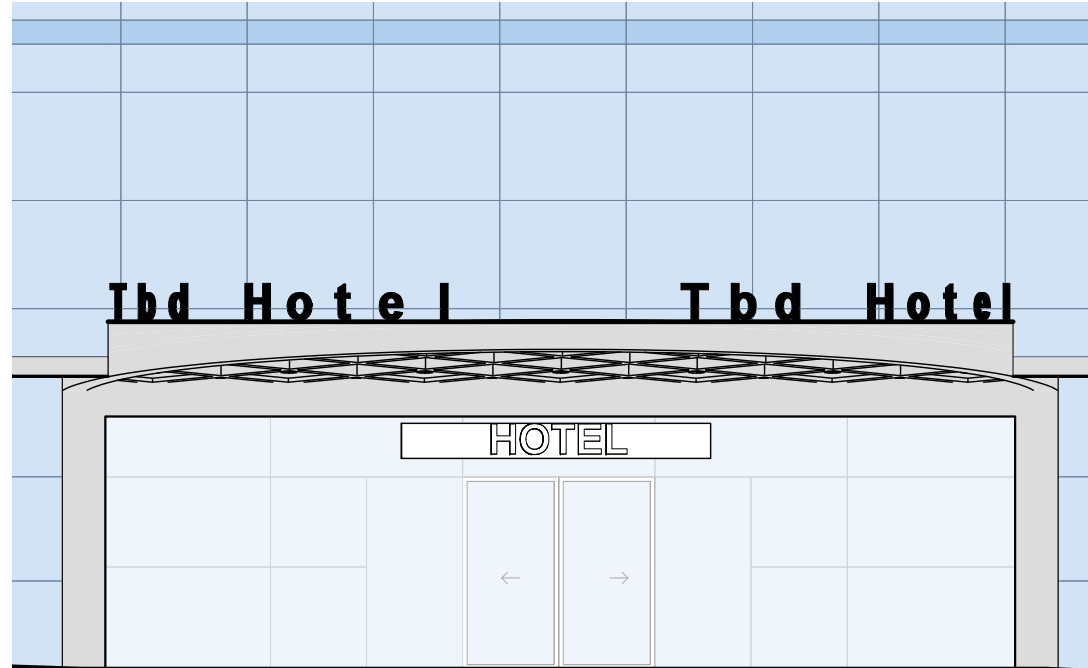




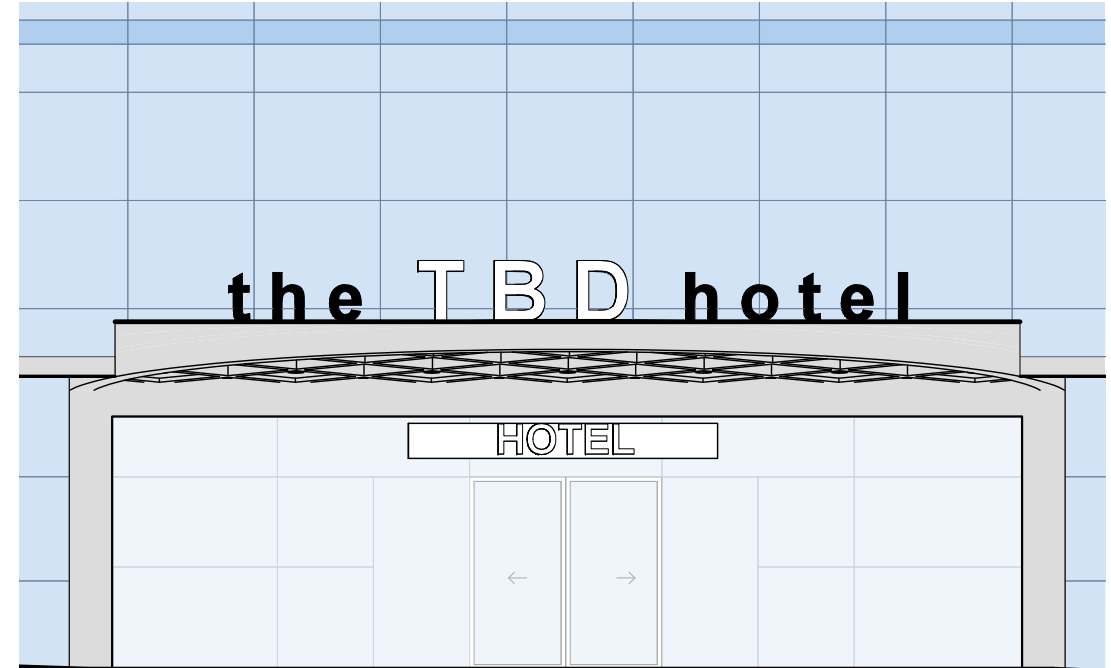
PINCKNEY STREET CANOPY
SIGNAGE OPT A



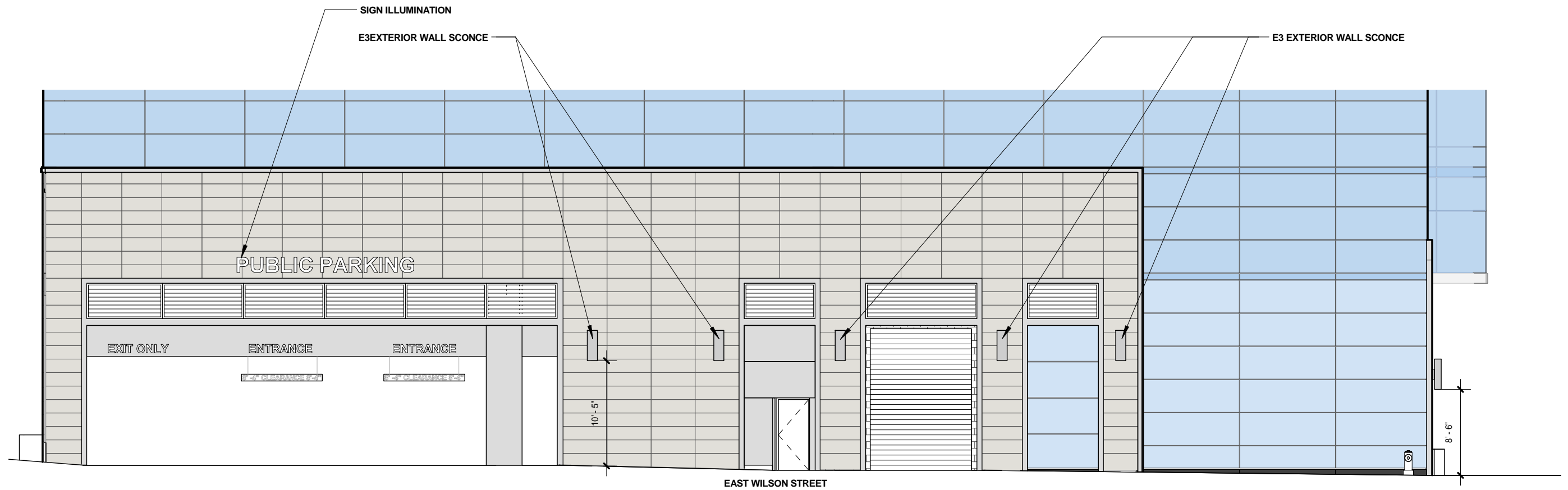
PINCKNEY STREET CANOPY
SIGNAGE OPT B



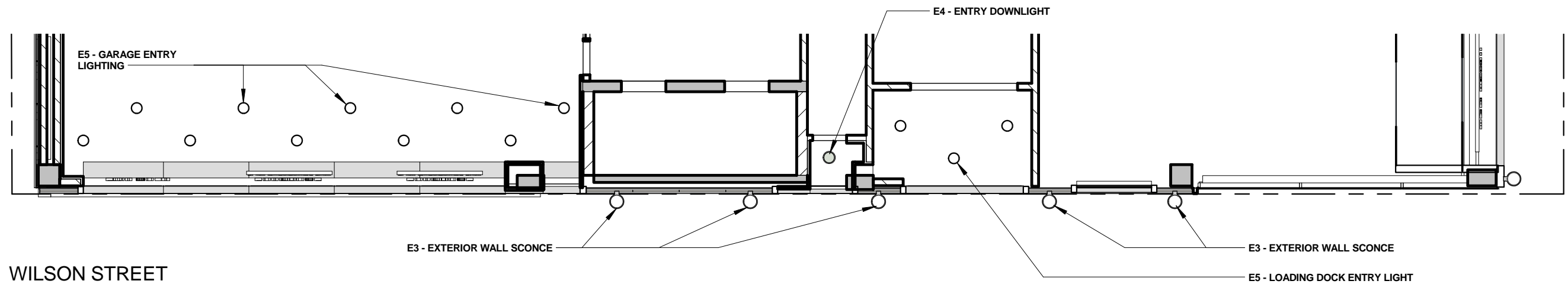
PINCKNEY STREET CANOPY
SIGNAGE OPT C



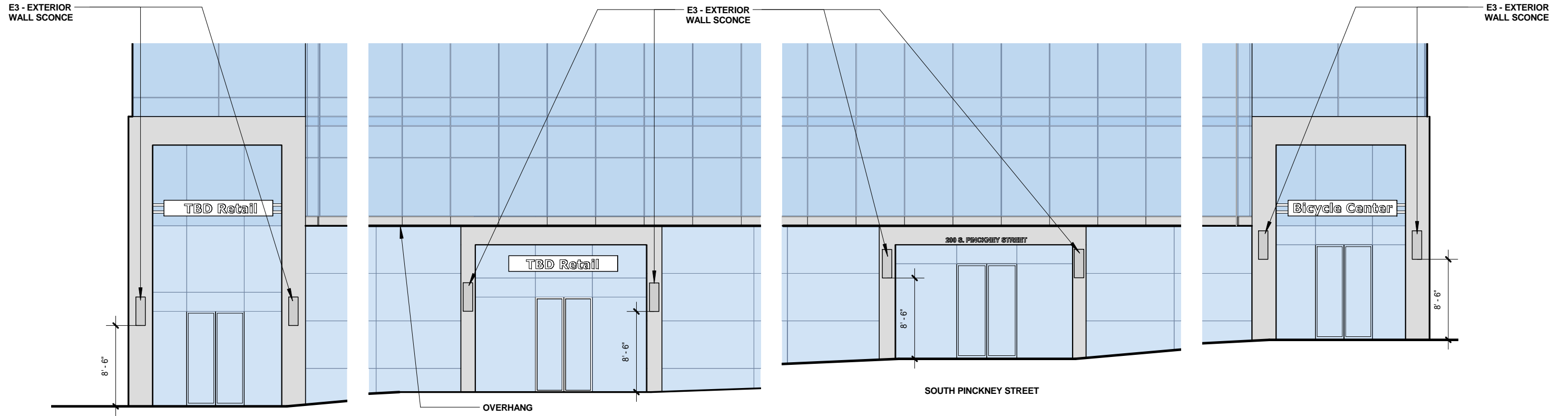
PINCKNEY STREET CANOPY
SIGNAGE OPT D



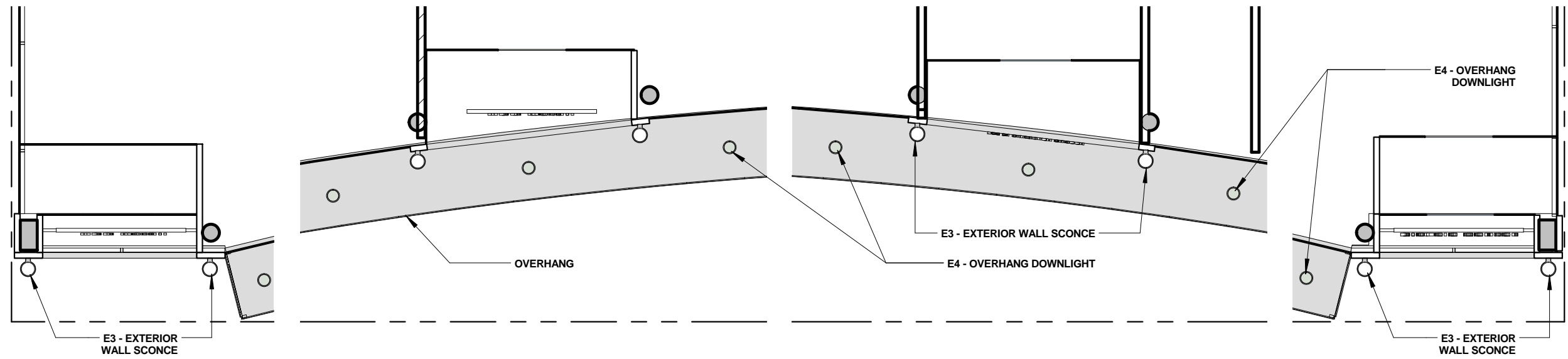
WILSON STREET LIGHTING
ELEVATION



WILSON STREET
REFLECTED CEILING PLAN

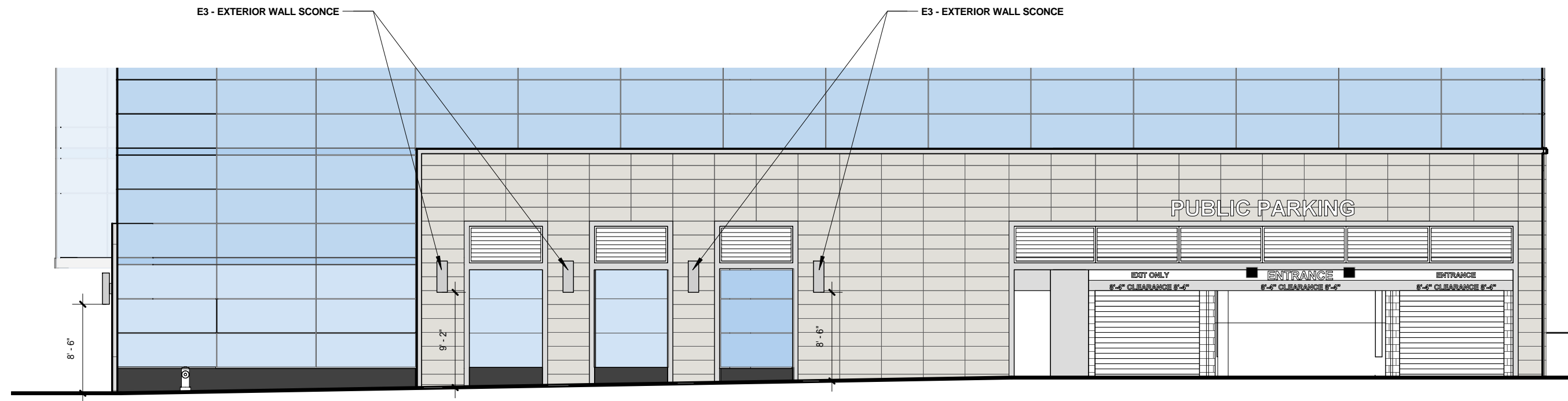


PINCKNEY STREET
LIGHTING ELEVATION

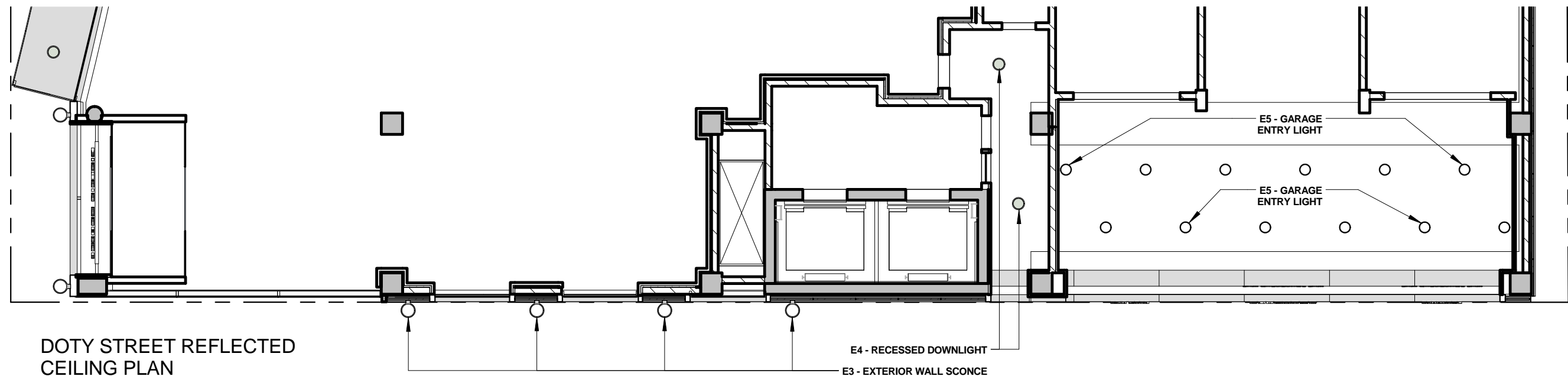


PINCKNEY STREET
REFLECTED CEILING PLAN



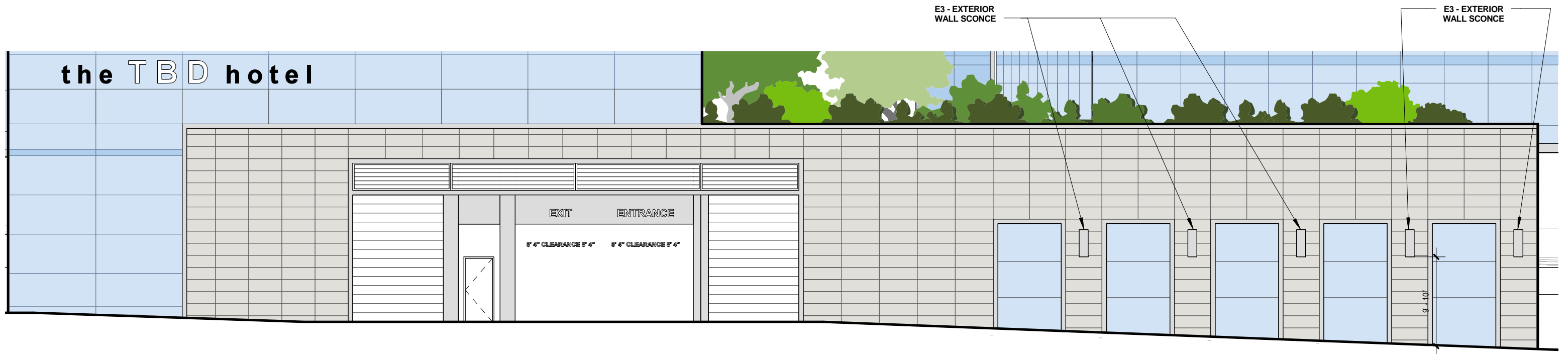


DOTY STREET LIGHTING
ELEVATION

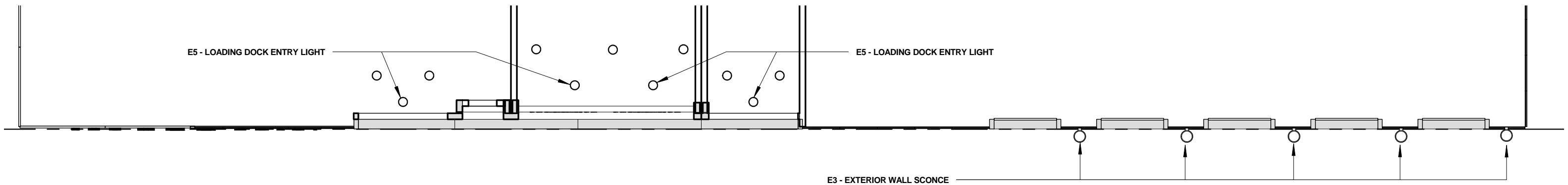


DOTY STREET REFLECTED
CEILING PLAN



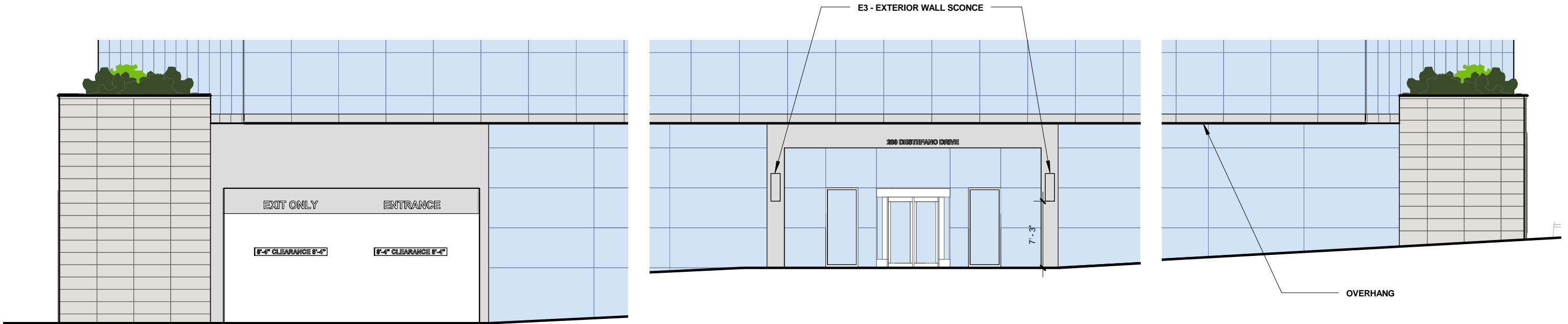


WILSON STREET LIGHTING
ELEVATION

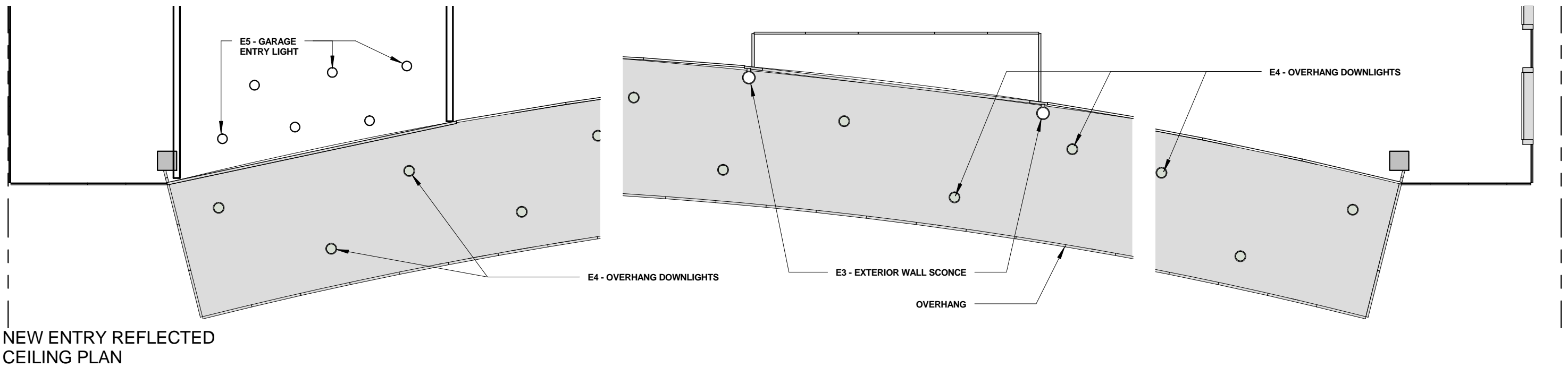


WILSON STREET
REFLECTED CEILING PLAN



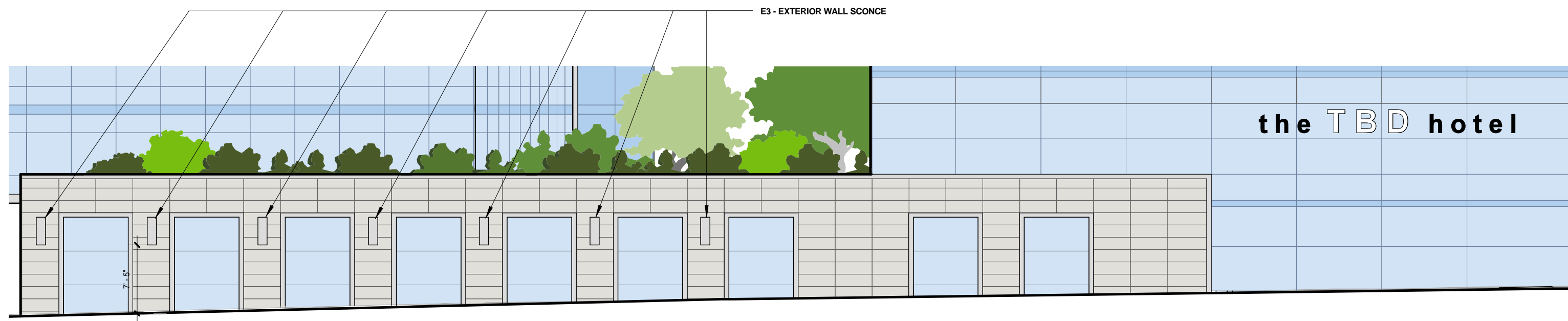


NEW ENTRY LIGHTING
ELEVATION

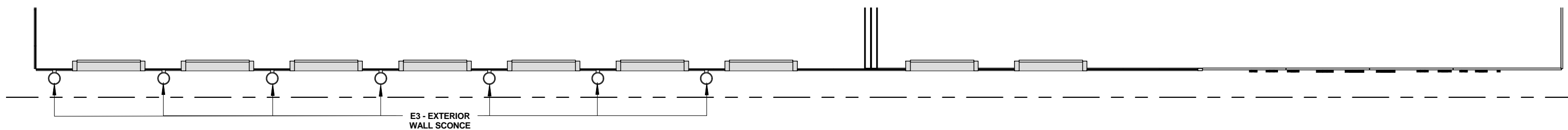


NEW ENTRY REFLECTED
CEILING PLAN



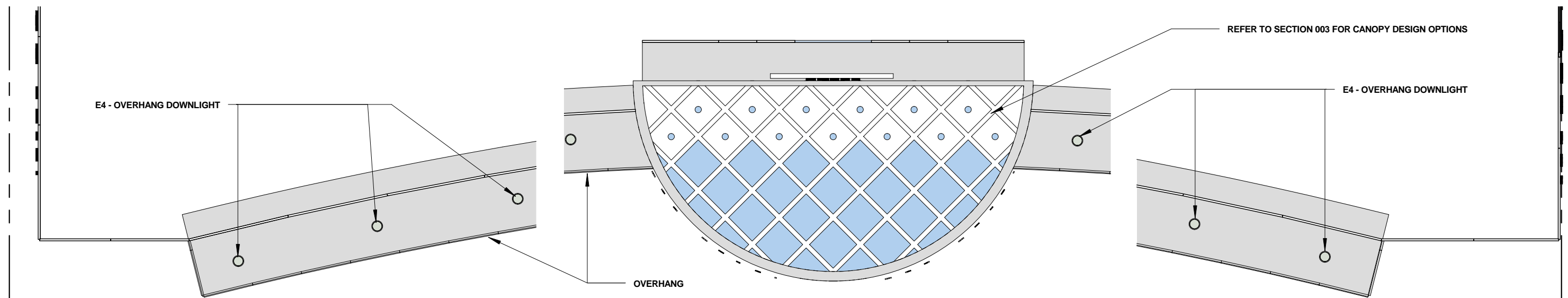
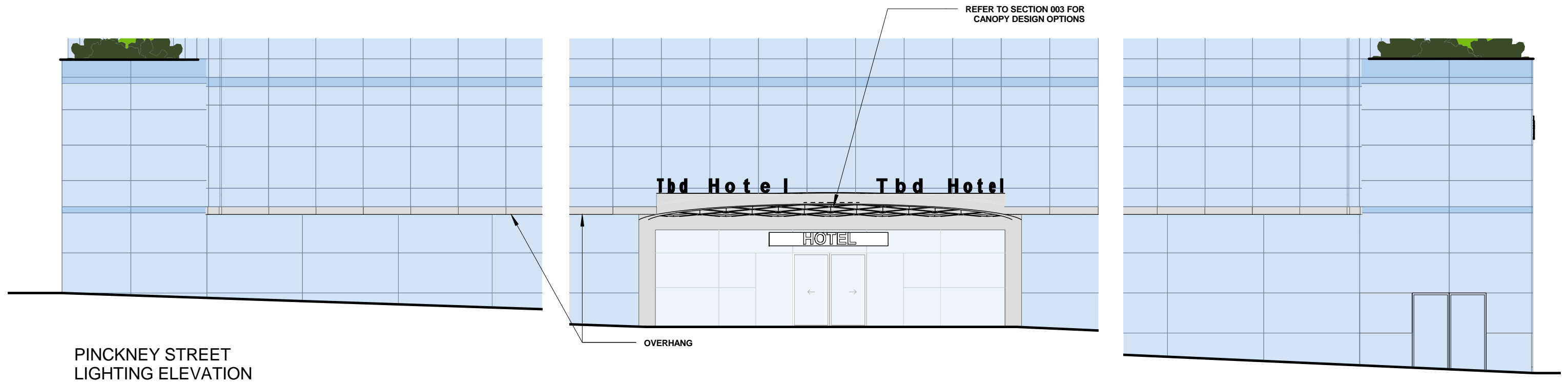


DOTY STREET LIGHTING
ELEVATION



DOTY STREET REFLECTED
CEILING PLAN





E1 - FOUNTAIN LIGHTING

LTV8SS

Lightvault® 8 Stainless Steel

kl_ltv8ss_spec.pdf

JOB _____

TYPE _____

NOTES _____

APPROVALS _____

FEATURES

Sealed IP68 LED light engine

Bluetooth connectivity for remote control aiming and dimming

Free Mobile App for Android and iOS

Easy to install and pair devices

Advanced thermal management provides long life in excess of 100,000+ hours

Runs cool to the touch - less than 40°C

Certifications

IK09

For LTV82/83

SPECIFICATIONS

LTV81SS

13" DIA (332 mm)

1" (26 mm)

4" (102 mm)

2" (51 mm)

10" (254 mm)

3 NPT Pipe Plugs

TOP

SIDE

BOTTOM

LTV82SS

10 3/8" DIA (263 mm)

1" (26 mm)

4" (102 mm)

2" (51 mm)

9 3/4" (250 mm)

3 NPT Pipe Plugs

TOP

SIDE

BOTTOM

LTV83SS

7 5/8" DIA (202 mm)

1" (26 mm)

4" (102 mm)

2" (51 mm)

8 1/4" (210 mm)

2 NPT Pipe Plugs

TOP

SIDE

BOTTOM

DEBRIS SHIELDS

LTV81

LTV82

LTV83

LIGHT DISTRIBUTIONS:

LTV81SS, LTV82SS, LTV83SS

Spot (SP)

Narrow Flood (NF)

Wall Wash (WW)

ORDERING CODE

LTV8xSS

Fixture Size

Distribution*

Source

LTV81SS

13" Dia.

SP, NF, WW

36L 36 LEDs

LTV82SS

10-3/8" Dia.

SP, NF

18L 18 LEDs

LTV82SS

10-3/8" Dia.

WW

16L 16 LEDs

LTV83SS

7-15/16" Dia.

SP, NF, WW

12L 12 LEDs

* SP = Spot, NF = Narrow Flood, WW = Wall Wash

Kim Lighting reserves the right to change specifications without notice.

© 2016 KIM LIGHTING | 16555 East Gale Ave. | City of Industry | CA 91745

P 626.968.5666 | F 626.369.2695 | www.kimlighting.com | Rev. Aug. 6, 2016

HUBBELL Lighting

| 1 |

E2 - BOLLARDS

Date: _____

Type: _____

Fixture: _____

Project: _____

Approved: _____

FCB460

Exterior 316 stainless steel bollard.

ORDERING

EXAMPLE: FCB460-120V-4k-2000-SS-D

SERIES	VOLTAGE	SOURCE/TEMPERATURE/LAMP	FINISH	ACCESSORIES
FCB460	120V	PL 26T 32T	SS Stainless Steel	D Dimming 0-10V
	277V	HID 50W MH 70W MH		LD LED Dim 0-10V
	347V△	100W MH		PE Photo Eye
	LED 3K 500 Lumens (35W)			
	35K			
		4K		

△contact factory

SPECIFICATION

MOUNTING

A thick die-cast base plate is provided and anchored through with a set of three 12" length x 3/8" diameter hot dipped anchor bolts. Heavy gauge base bracketing for bollard installation.

Installation: <http://tinyurl.com/jthbwvx>

CONSTRUCTION

Marine grade 316 stainless steel housing.

Impact resistant, UV stabilized, clear, polycarbonate diffuser.

Neoprene continuous closed cell gasket to seal out contaminants. Captive and recessed stainless steel, tamper resistant hex socket screws.

LED

Lumens stated are the minimum delivered out of the luminaire. LED lifetime is greater than or equal to 70,000 hours with the lumen depreciation greater than L70. All of our luminaires are LM-80 tested and are ≥ CRI80, with a 4-step MacAdam Ellipse color consistency. Integral power supply standard. Input voltage 120V or 277V standard.

FINISH

Brushed stainless steel finish.

ELECTRICAL

Socket PL: Four pin plug-in type compact fluorescent lamp holder. HID: Medium base pulse rated 4KV porcelain socket.

Ballast PL: Fluorescent high power factor electronic, UL listed ballast standard. HID: Electronic ballast standard. Ballast has a manufacturer issued 5 year warranty. Electronic voltage 120V or 277V is standard. Please consult factory for other voltage options.

LISTING

UL & cUL/ETL, U.S. and CA listed for wet locations. IP65 rating.

FC Lighting, Inc. reserves the right to change details or specifications without notice. Product use certifies agreement to FC Lighting's terms and conditions.

© 2016 FC Lighting, Inc. 3609 Swenson Ave., St. Charles, IL 60174 p. 800-900-1730 f. 630-889-8106 www.fcighting.com

AK Rev. 716

L V D A

FOR CITY OF MADISON AND BEITLER REAL ESTATE

lothan van hook destefano

ARCHITECTURE LLC

JUDGE DOYLE SQUARE - SECTION 4 - OVERALL STUDIES, MATERIALS AND RENDERINGS

EXTERIOR LIGHTING - CUT SHEETS

4-06

FEBRUARY 22, 2017

E3 - EXTERIOR WALL SCONCE



Date:

Type:

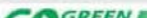
Fixture:

Project:

Approved:

FCC820
8" Round Wall Mounted Die-Cast
Aluminum Cylinder, Up / Down Light



ORDERING										
		25 pcs or Less / ships in 2 weeks *							EXAMPLE: FCC820-120V-3K-1200-BK-D	
SERIES	VOLTAGE	SOURCE/TEMPERATURE/LAMP			FINISH		LED OPTIC DIRECTION			ACCESSORIES
FCC820	120V	PL	2/26T 2/32T 2/42T		BK	Black	UP		DOWN	D Dimming (0-10V)
	277V	INC	2/150W PAR38		BZ	Bronze	USP	Spot	DSP Spot	LD LED Dimming (0-10V)
	347V△	HID	2/70W MH G12		SL	Silver	UNFL	Narrow Flood	DNFL Narrow Flood	EMR Emergency Backup, Remote
			2/70W MH PAR30L		WH	White	UFL	Flood	DFL Flood	
	LED	3K	1200 Lumens (15W) *		CC	Custom Color	UWFL	Wide Flood	DWFL Wide Flood	
4K 2000 Lumens (24w) *			UNO	None			DNO None			
△ contact factory										

△ contact factory
* Each Direction

SPECIFICATION

MOUNTING

- Mounts directly to standard recessed junction box. Additional mounting holes allow unit to be attached directly to mounting surface.

CONSTRUCTION

- Marine grade, corrosion resistant, heavy walled, high pressure die-cast aluminum with die-cast back mounting plate.
- Lens is 3/8" thick clear tempered glass. Precision formed semi-specular aluminum for maximum reflectance.
- Silicone gasket to provide maximum protection against contaminants. Hidden fasteners allow for cover removal to facilitate installation and services.

LED

- Lumens stated are the minimum delivered out of the luminaire. LED lifetime is greater than or equal to 70,000 hours with the lumen depreciation greater than L70. All of our luminaires are LM-80 tested and are ≥ CRI80, with a 4-step MacAdam Ellipse color consistency. Integral power supply standard. Input voltage 120V or 277V standard. Consult factory for non-white static LED colors; Red, Green, Blue or Amber.

FINISH

- Six stage chemical pre-treatment process that includes iron phosphate, to prepare the substrate for a UV stable, super durable standard polyester powder coat.
- Optional e-coat process is added to the standard finish including zinc phosphate for a 5 year limited warranty.

ELECTRICAL

- Socket** PL: Four pin plug-in type compact fluorescent lamp holder (*lamp by others*). INC (120V only): Medium base porcelain socket. HID: Medium base pulse rated 4KV porcelain socket or G12 base porcelain socket.
- Ballast** PL: Fluorescent electronic, UL listed ballast standard. HID: Electronic ballast standard. Ballast has a manufacturer issued 5 year warranty. Please consult factory for other voltage options.

LISTING

- UL & cUL listed for wet location. IP65 Rating.

* Terms & Conditions for our Go Green Speed, quick ship program are located on our website: fclighting.com

FC Lighting, Inc. reserves the right to change, without notice, details or specifications in product design. Product use certifies agreement to FC Lighting's terms and conditions.

© 2016 FC Lighting, Inc. 3609 Swenson Ave., St. Charles, IL 60174 p. 800-900-1730 f. 630-889-8106 www.fclighting.com

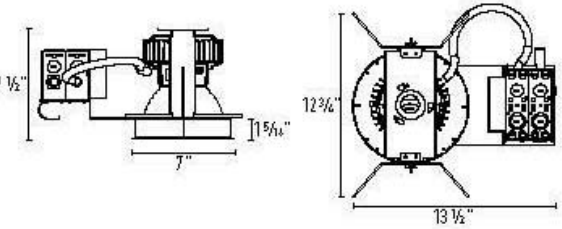
MT Rev. 615

E4 - OVERHANG DOWNLIGHTS

SS6G2 / IC632
6" LED General Illumination / Regressed Lensed Reflector



JOB NAME		CATALOG NUMBER	
NOTES		TYPE	



Cut-out: 6 1/2"

Order Matrix | Example: SS6G22000308-Z7-EM

A	B	C	D	E
A	Series		D	Dimming
SS6G2	6" LED Recessed Round		blank	0-10V Dimming 10%
			-D10V1	0-10V Dimming 1%
			-ED10V1	d/dLED 0-10V 1% ¹
			-ED10V01	d/dLED 0-10V 0.1% ¹
			-L0 T1	Lutron Hi-Lume 1%
			-LUT	Lutron EcoSystem 1%
			-L0 T5	Lutron EcoSystem 5%
			-EDALI1	d/dLED DALI 1% ¹
			-EDALI01	d/dLED DALI 0.1% ¹
B	Module Lumen Output		E	Voltage
1100	1100 Lumen		blank	120V
1500	1500 Lumen		-Z7	277V
2000	2000 Lumen			
3000	3000 Lumen		E	Options
C	Color Temperature / CRI		-EH	Emergency Backup
2700	2700K / 80 CRI		-I100	C-Channel Bar Hanger
3000	3000K / 80 CRI		-I200	Rat Bar Hanger
3500	3500K / 80 CRI		-I400	Wood Joist Bar Hanger
4000	4000K / 80 CRI			

Notes:
1. d/dLED dimming not available for 3000lm module

Reflector Matrix | Example: IC632H2-SF-SB

A	B	C	D
A Series		C Trim	
IC632	6" Regressed Lensed Reflector	-SF Self Flanged -SF-W Self Flanged White	
B Reflector Finish		D Lens Type	
-C Clear		-CR Clear Tempered	
-H Haze		-SB Sand Blasted	
-W White			

SS6G22000308-Z7-EM
Intense Lighting
3340 E La Palma Ave, Anaheim, CA 92806 | tel 714 430-9877 | fax 714 430-9883
©2016 Intense Lighting, LLC. All rights reserved. Subject to change without notice.

Catalog Number	System Wattage *	Delivered Lumens **
SS6G21100358 / IC632C-CR	18W	922lm @ 3500K
SS6G21500358 / IC632C-CR	19W	1242lm @ 3500K
SS6G22000358 / IC632C-CR	25W	1509lm @ 3500K
SS6G23000358 / IC632C-CR	37W	2225lm @ 3500K

* System wattage include driver and LED module consumption.
** Delivered lumen output will vary depending on CCT and lens type (0.7 m multiplier for <S8 lens).

LED MODULE
- Powered by OSRAM PrevaLED® Cube LED Module
- 50,000 hours at t70% lumen maintenance
- No heat, mercury or UV
- Available in 1100, 1500, 2000 and 3000lm
- CRI = 80 & CCT 2700K, 3000K, 3500K, 4000K

ELECTRICAL SYSTEM
- Osram Optotronic® standard with 0-10V dimming to 10%
- Power factor > .9, 50/60Hz
- Multiple dimming options available

OPTICAL SYSTEM
Specification Grade Reflector, 1.2mm thickness, 1 1/2" regressed lens. Reflector available in clear specular, haze or white. Architectural, discrete polished self flange standard. Optional painted white flange is available.

FRAME CONSTRUCTION
Heavy duty galvanized steel frame with a large access junction box. ETL listed for through wiring. LED light engine and driver are accessible from above or below ceiling.

INSTALLATION
The luminaire's type Non-IC. Insulation must be kept at a minimum of 3" away from fixture. Universal mounting brackets included. Compatible with C-channel, flat bar, wood joist bar hanger and EMF. Bar hangers must be ordered separately. C-channel are recommended for T-bar ceilings. Maximum ceiling thickness is 1 1/2".

EMERGENCY BACKUP
Remote test switch included. Emergency driver operates LED load of up to 7.0 Watts at a nominal 450 lumens for a minimum of 90 minutes.

LISTING / WARRANTY
- ETL listed to US and Canadian standards for wet locations.
- 10-Year Intense LED Limited Warranty



E5 - GARAGE ENTRY LIGHTS

THE MERCURY PARKING GARAGE LED

50W

REPLACES UP TO A 120-WATT METAL HALIDE FIXTURE

FOR MORE FWC APPROVED LED LIGHTING SEE SPECGRADELED.COM



FWC APPROVED (LBF-FWC)



SPECIFICATIONS

Expected life: Over 100,000 hrs.
Rating: IP 65
Color Rendering Index (CRI): >80
Power factor: >0.98%
Input line voltage: 90-305 VAC
347-480V (optional)
Operating temp: -40°F-122°F
(Also available: -40°F-140°F)
Input line frequency: 50/60 Hz
LED efficiency:
- warm white, 131 lm/w
- natural white, 141 lm/w
- cool white, 143 lm/w

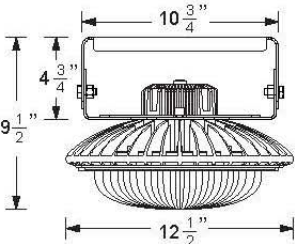
MISC SPECS

LED chips: Lumileds Luxeon-T
Driver: UL approved Meanwell
Dimmable: 0-10V (optional)
Occupancy sensor: (optional)
Hanging weight: 10 lbs.

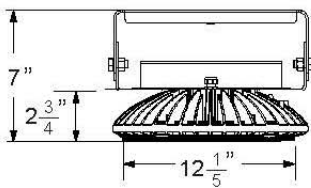
MATERIALS

Heat sink housing:
Anodized aluminum
Finish: Powder coated
Dropped lens: Acrylic

50W DIMENSIONS (SURFACE MOUNT)



50W 480V CONFIGURATION (SURFACE MOUNT)



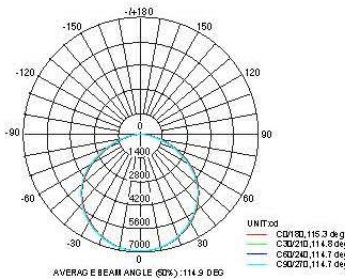
OCCUPANCY SENSOR (OS) (OPTIONAL)



OS: Occupancy sensor for wet location (IP65)




PHOTOMETRICS



SPECGRADE LED

TOLL-FREE: 888-410-5337 | FAX: 614-868-5344 | © 2017 SpecGradeLED.

E6 - TREE LIGHTING



JOB _____ TYPE _____
NOTES _____ APPROVALS _____


LTV81-RGBW

Lightvault® 8
[kl_ltv81_rgbw_spec.pdf](#)

FEATURES


- Bluetooth connectivity for remote control aiming, dimming, color changing
- Free mobile App for Android and iOS
- Hardwired DMX connectivity for advanced control (controller supplied by others)
- IP68 sealed light engine

Certifications

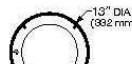


SPECIFICATIONS

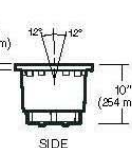
Pour Box rough-in housing ships separately and as a quick-ship if requested.



Approx. Weight = 31.5 lbs.




TOP

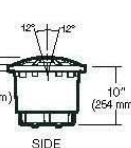


SIDE

LTV81FF/LTV81SS




TOP

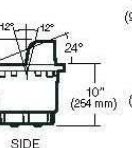


SIDE

LTV81RG




TOP

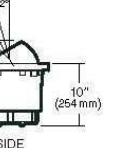


SIDE

LTV81HS

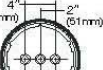


TOP




SIDE

LTV81EB



8 NPT Pipe Plugs
BOTTOM
Typical for all



LTV81
Debris Shield

ORDERING CODE

Fixture Size	Style	Distribution	Electrical Module	Lens Options ¹	Rebar Cage Anchor
LTV81 13" Dia.	FF Flat Frame SS Stainless Steel HS Half Shield RG Rock Guard	SP Spot NF Narrow Flood	Source 24L 24 LEDs (for LTV81FF) 12L 12 LEDs (for LTV81EB) Color Temperature RGBW Voltages UV 120-277V	SR Slip-Resistant Lens ²	RCA81 for LTV81

¹ All lens options are integral parts of component module and must be installed at factory.
² Slip Resistant Lens only available with the Flat Frame and Stainless Steel

Kim Lighting reserves the right to change specifications without notice.

© 2016 KIM LIGHTING | 16555 East Gale Ave. | City of Industry | CA 91745
P 626.968.5666 | F 626.369.2695 | www.kimlighting.com | Rev. Dec 22, 2016

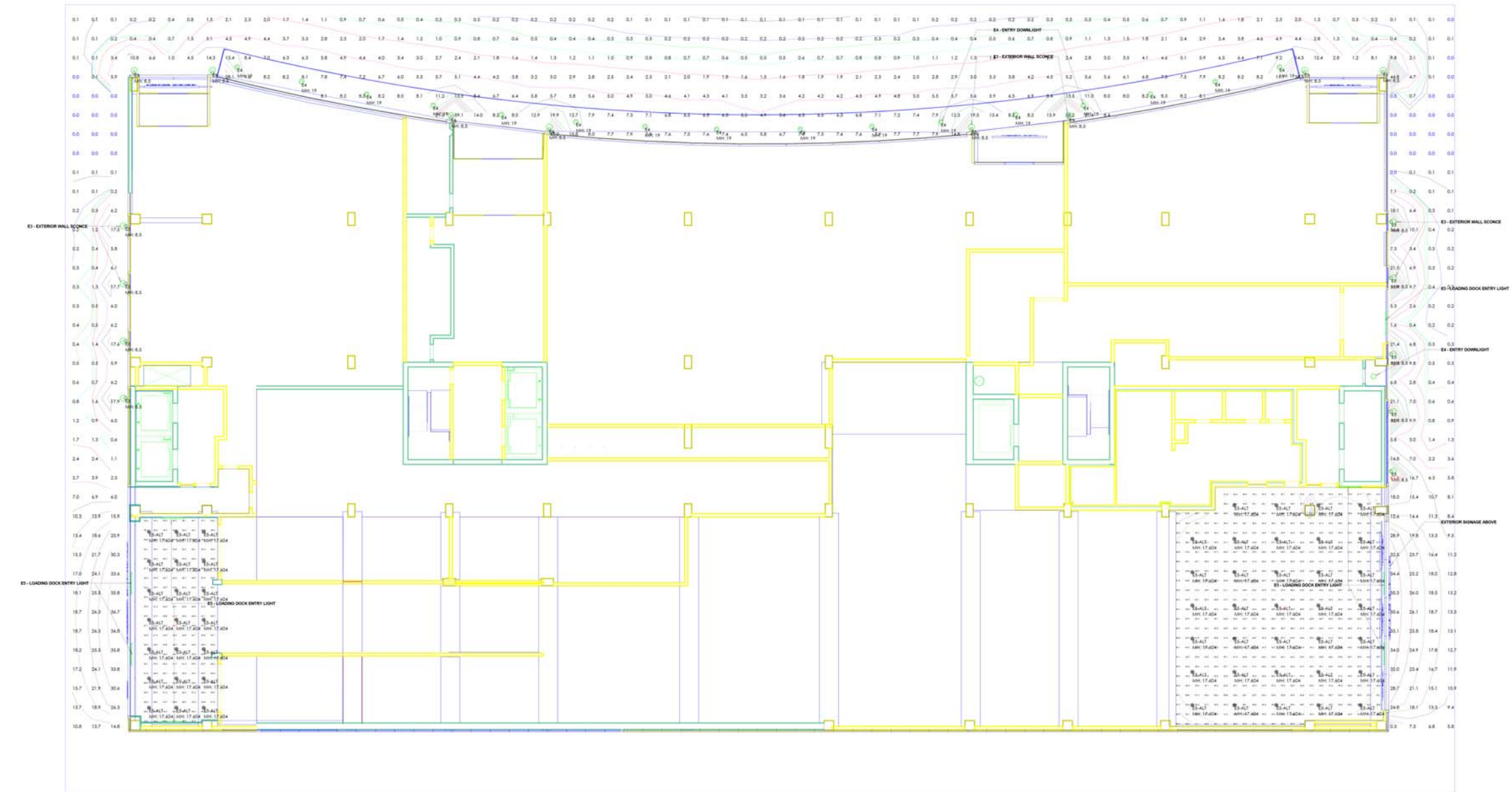


| 1 |



ORNAMENTAL STREET
LIGHTS BY CITY OF MADISON



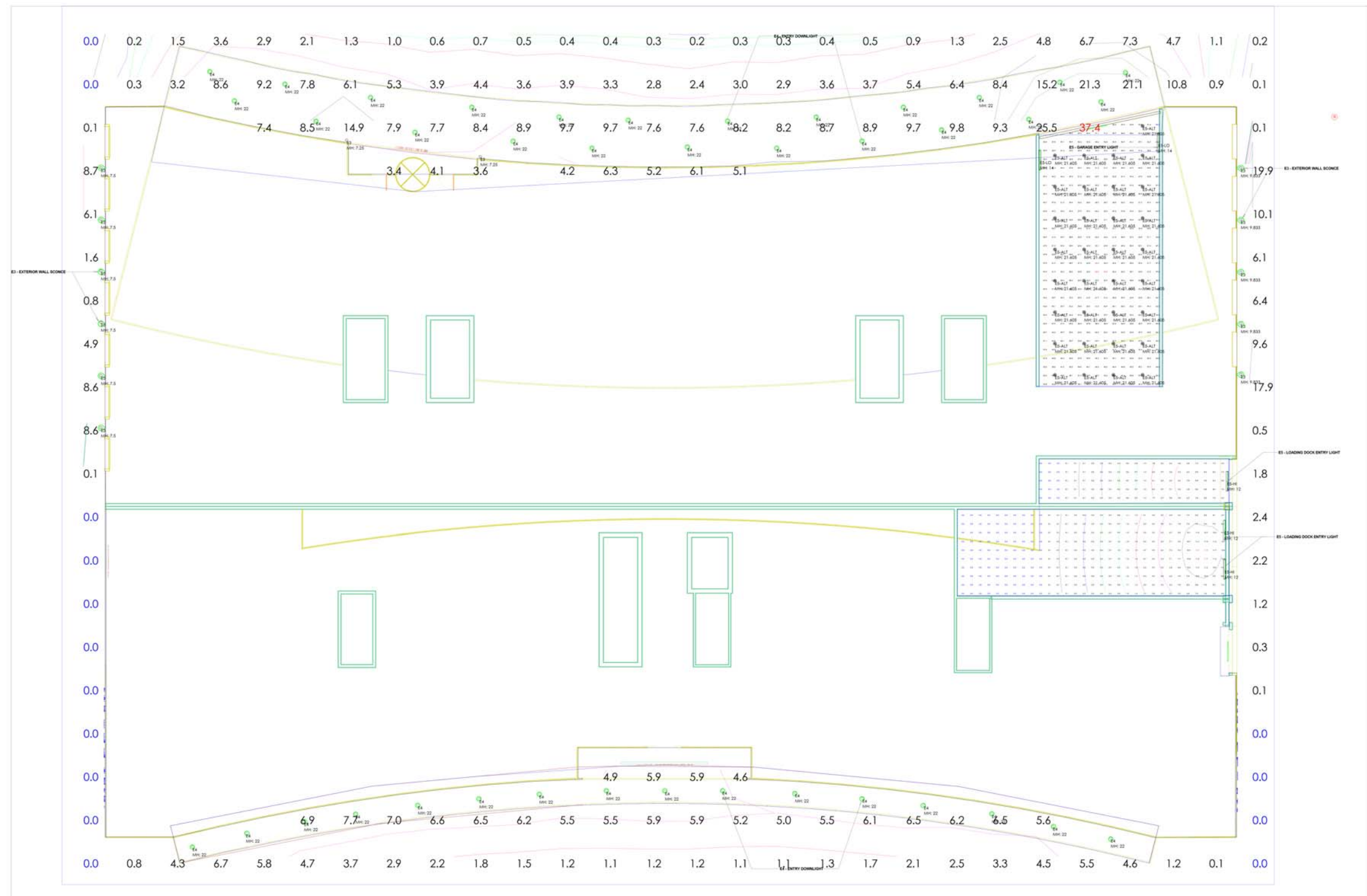


Luminaire Schedule							Description
Symbol	Qty	Label	Arrangement	Arr. Lum. Lumens	LLF	Mfr	
⊙	17	E3	GROUP	6304	0.571	N.A.	FCC820-XXXV-3K-2000-XX-UNFL-DNFL-X
⊙	16	E4	SINGLE	2225	0.900	INTENSE LIGHTING	SS6G23000358_IC632C-CR
⊙	55	E5-ALT	SINGLE	7120	0.900	SPECGRADELED	LBF-50-XXXX-120-DL

Room Summary		
Label	Wall Ht.	Description

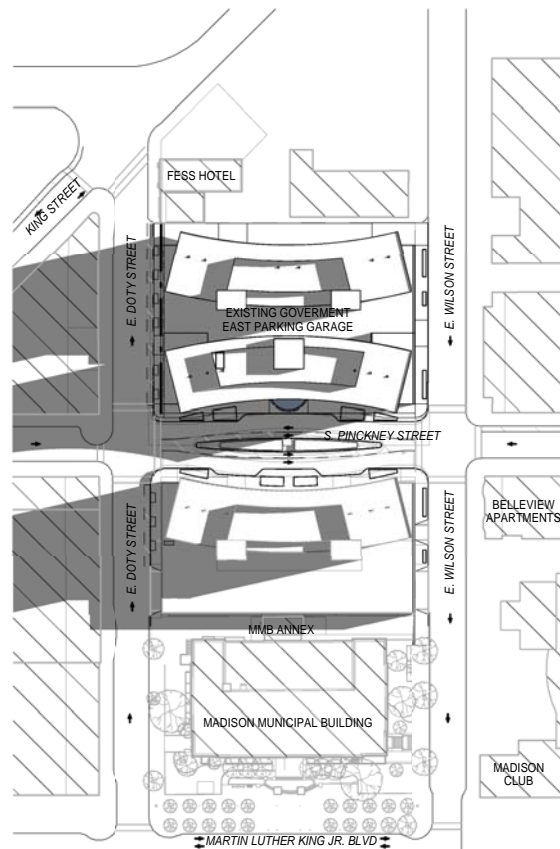
Calculation Summary							
Label	CalcType	Units	Avg	Max	Min	Max/Min	Description
Area_Planar	Illuminance	Fc	6.79	61.9	0.0	N.A.	Readings at ground
Doyle Street Parking_Floor	Illuminance	Fc	53.78	66.3	34.2	1.94	Readings taken at floor
Wilson Street Parking_Floor	Illuminance	Fc	51.15	69.3	0.0	N.A.	Readings at gorund

Filename: C:\Users\chrisc\Desktop\Layouts\Judge Doyle Square\Judge Doyle Square.AGI

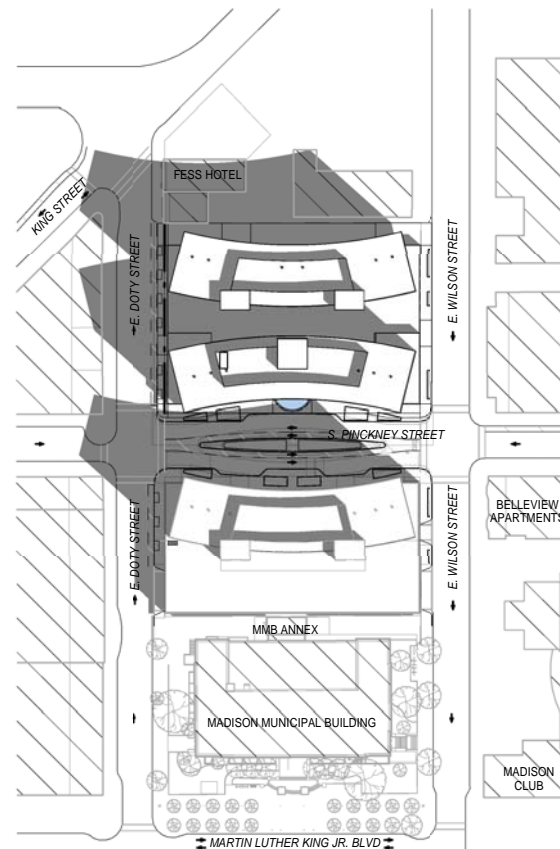


Luminaire Schedule							
Symbol	Qty	Label	Arrangement	Arr. Lum. Lumens	LLF	Mfr	Description
⊙	13	E3	GROUP	6304	0.571	N.A.	FCC820-XXXV-3K-2000-XX-UNFL-DNFL-X
⊙	39	E4	SINGLE	2225	0.900	INTENSE LIGHTING	SS6G23000358_IC632C-CR
⊙	33	E5-ALT	SINGLE	7120	0.900	SPEC GRADE LED	LBF-50-XXXXX-120-DL
	3	E5-HI	SINGLE	3796	0.900	Luminaire LED, Inc., Edison, New Jersey,	AEL48-35_2W 4000K
	2	E5-LO	SINGLE	2030	0.900	Luminaire LED, Inc., Edison, New Jersey,	AEL48-20W 4000K

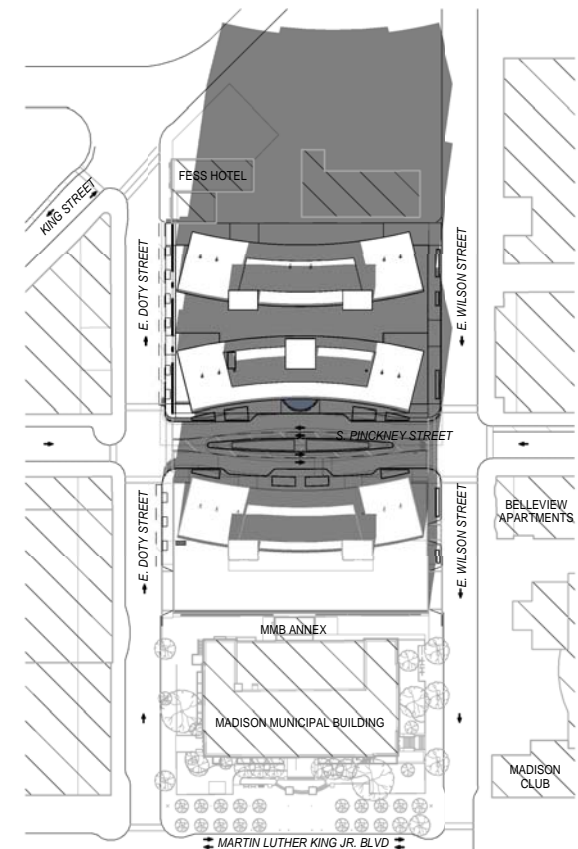
Calculation Summary							
Label	CalcType	Units	Avg	Max	Min	Max/Min	Description
Ground Planar	Illuminance	Fc	4.73	37.4	0.0	N.A.	Readings at ground
Loading Dock Floor	Illuminance	Fc	2.56	11.9	0.0	N.A.	Readings at ground
Parking Entrance	Illuminance	Fc	49.95	63.5	28.5	2.23	Readings at ground



9 AM, MARCH 21



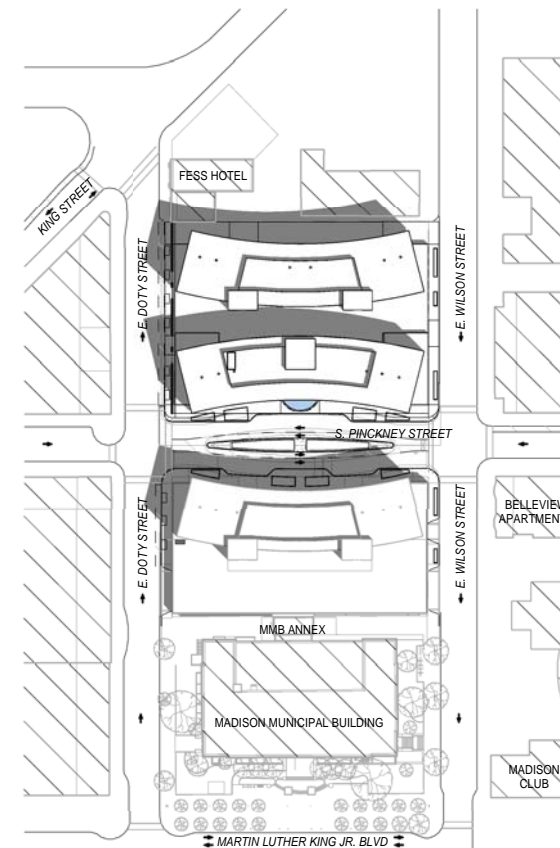
NOON, MARCH 21



3 PM, MARCH 21



9 AM, JUNE 21



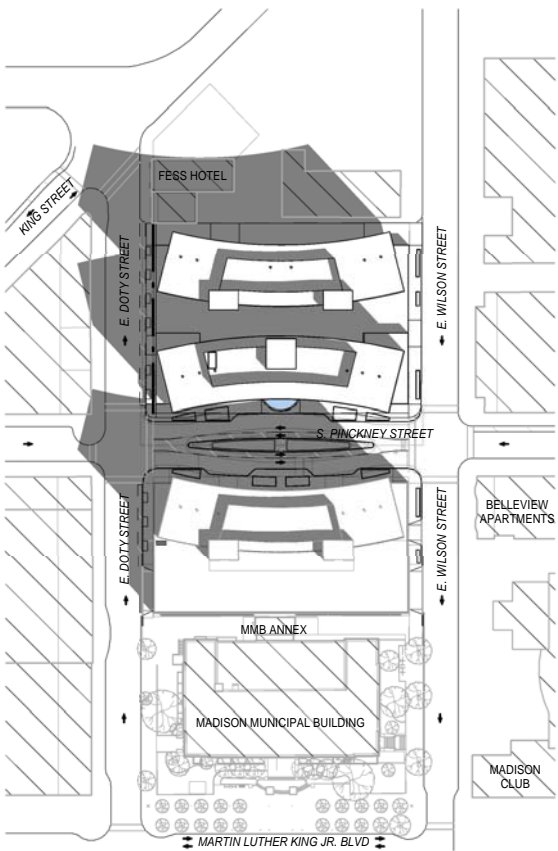
NOON, JUNE 21



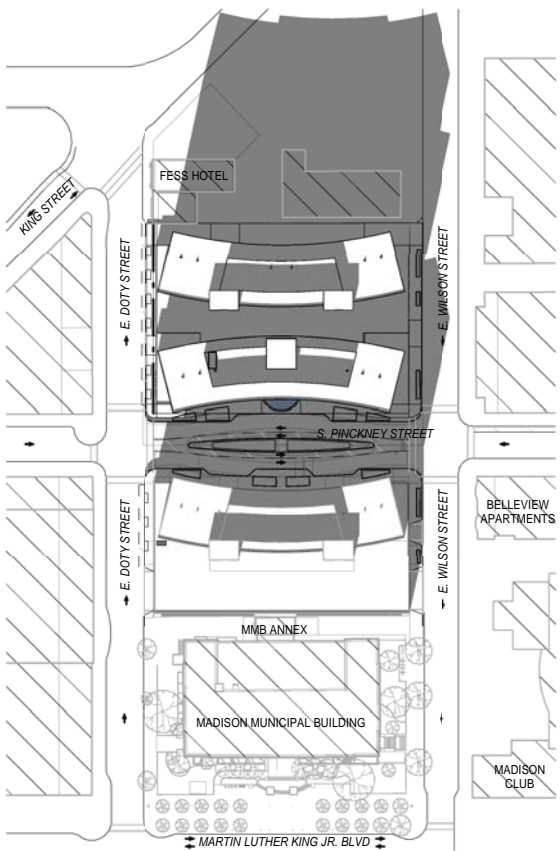
3 PM, JUNE 21



9 AM, SEPTEMBER 21



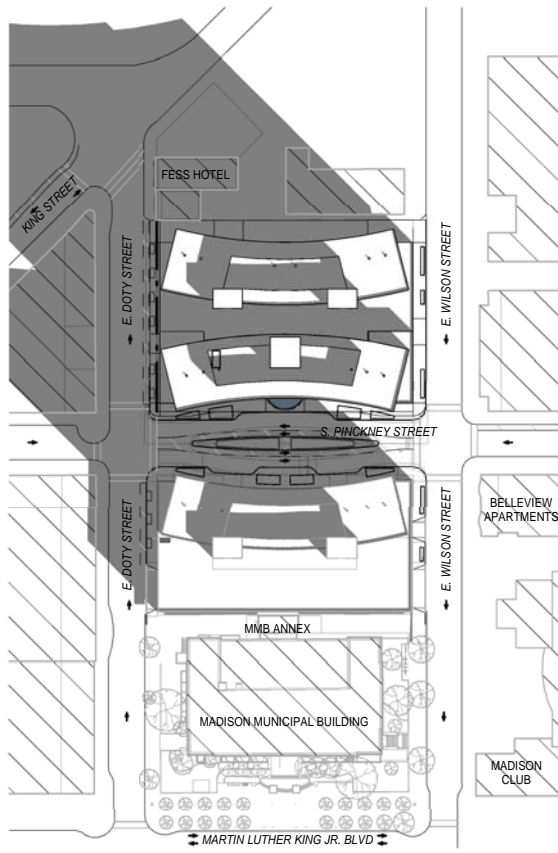
NOON, SEPTEMBER 21



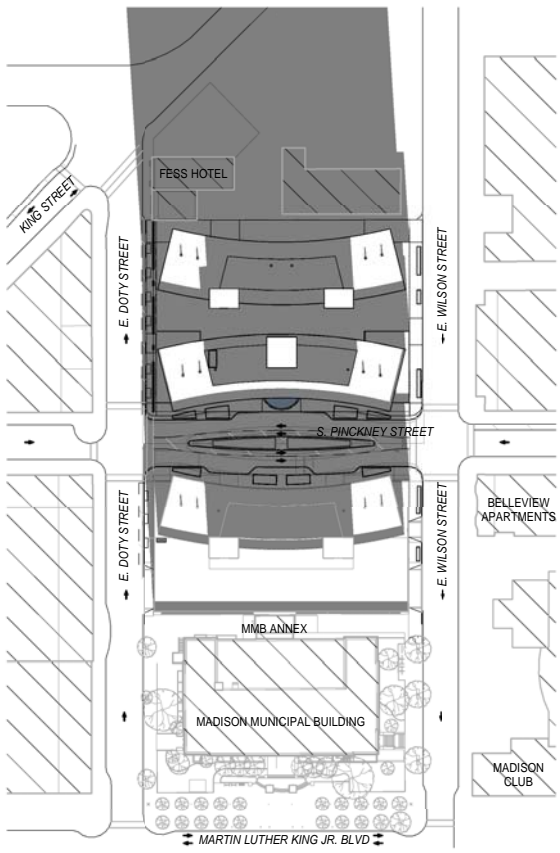
3 PM, SEPTEMBER 21



9 AM, DECEMBER 21

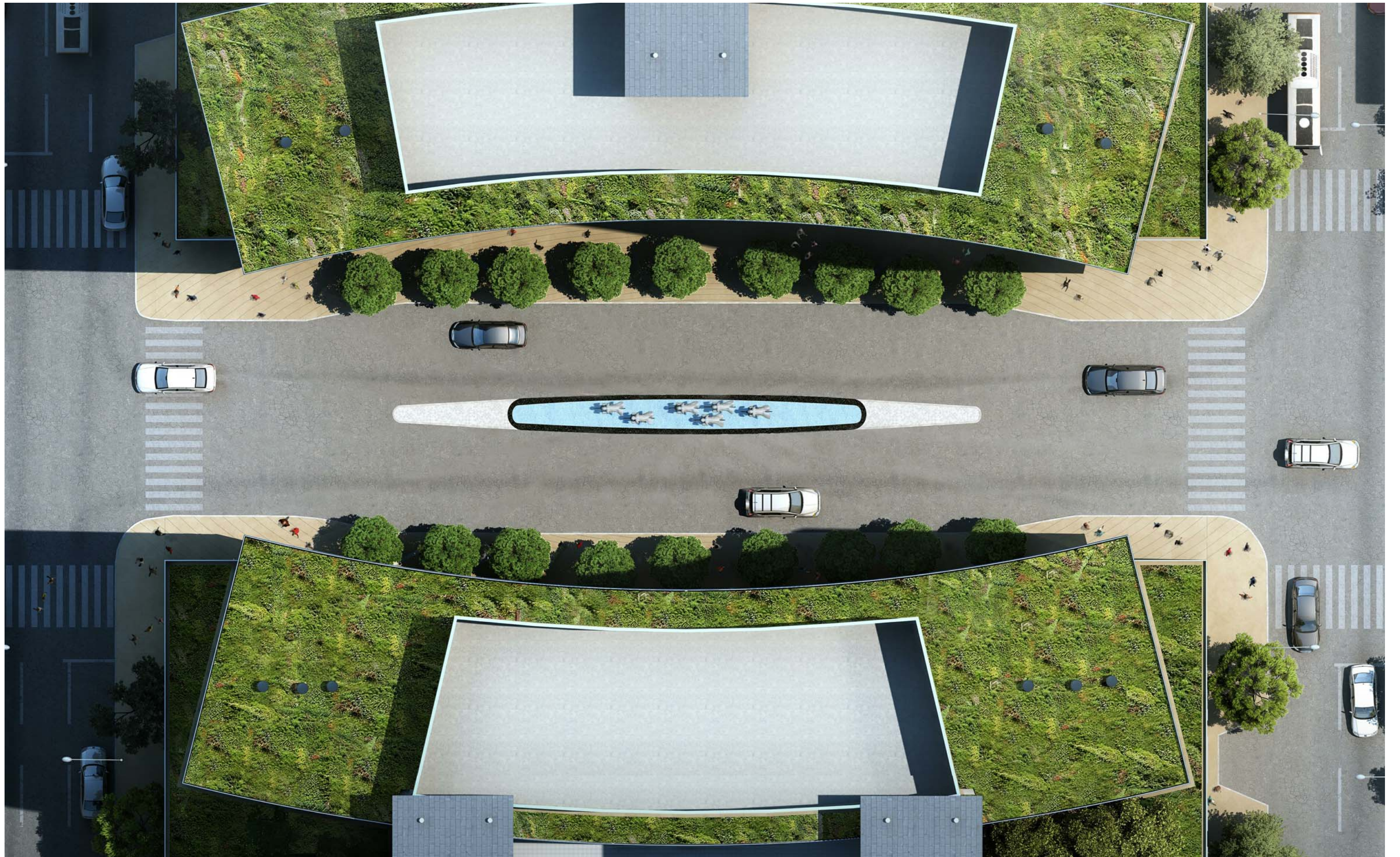


NOON, DECEMBER 21



3 PM, DECEMBER 21







DOTY STREET



WILSON STREET







