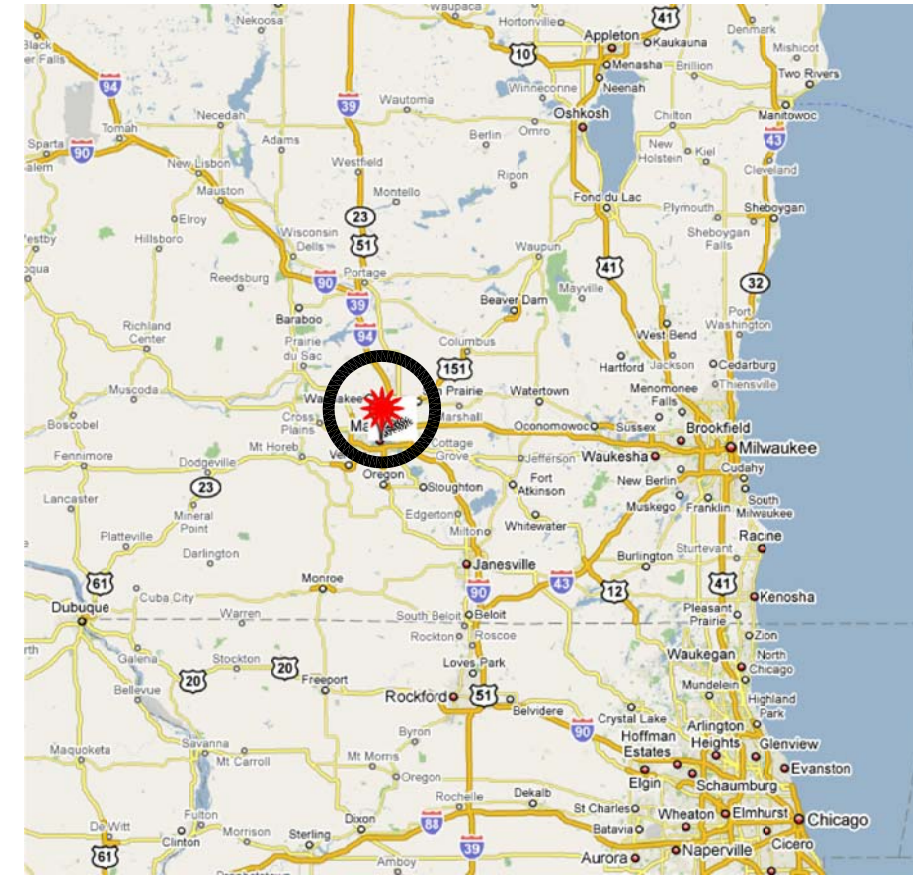
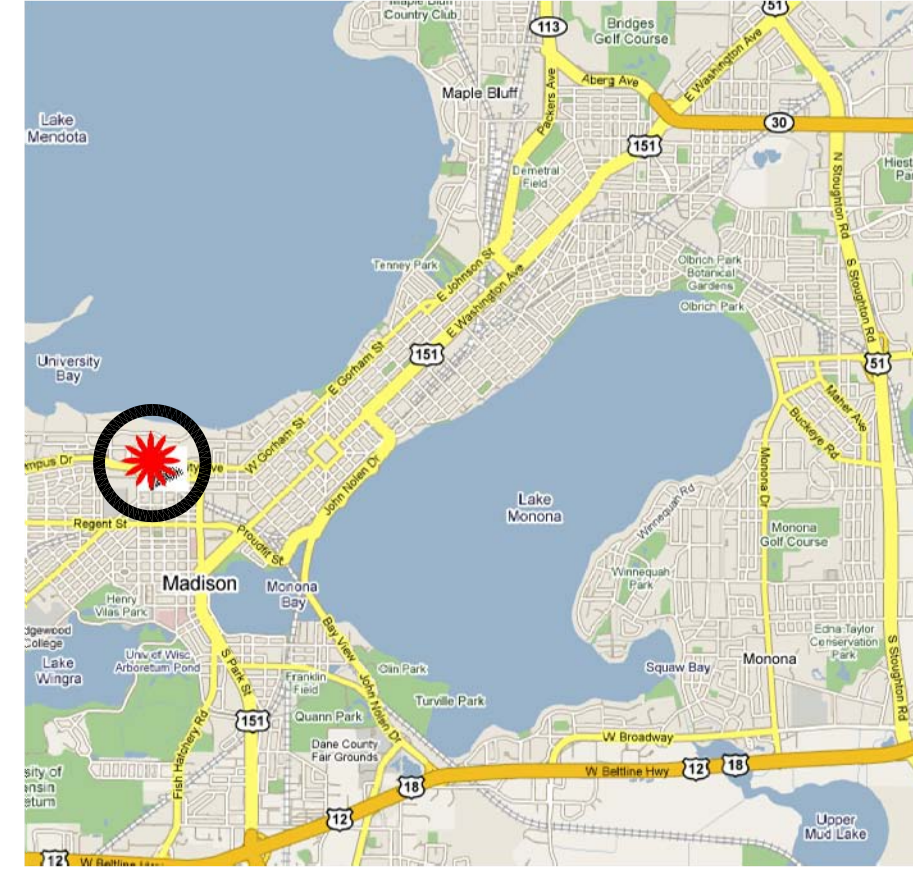


# UNIVERSITY OF WISCONSIN MADISON

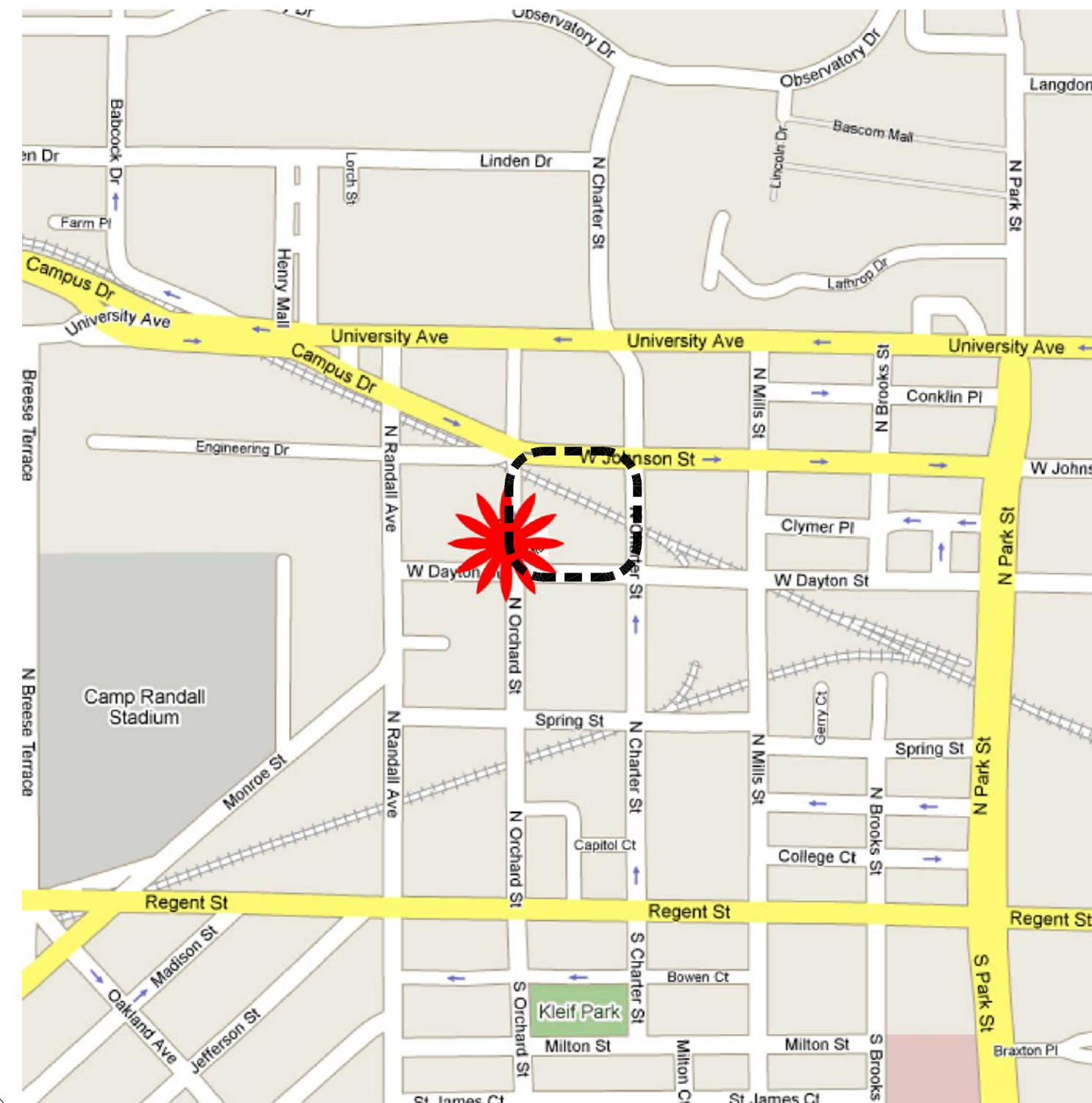
# NEW SOUTH CAMPUS UNION



CENTRAL WISCONSIN



CITY OF MADISON



PROJECT SITE

## OWNER

STATE OF WISCONSIN  
DEPARTMENT OF ADMINISTRATION  
DIVISION OF STATE FACILITIES  
101 EAST WILSON ST., 7TH FLOOR  
MADISON, WISCONSIN 53702  
PHONE 608.266.2731  
FAX 608.267.2710

## AGENCY

UNIVERSITY OF WISCONSIN - MADISON  
CAPITAL PLANNING & DEVELOPMENT  
FACILITIES PLANNING & MANAGEMENT  
9TH FLOOR WARF  
610 WALNUT STREET  
MADISON, WI 53726  
PHONE 608.263.3000  
FAX 608.265.3139

## ARCHITECT

WORKSHOP ARCHITECTS  
1736 NORTH SECOND STREET  
MILWAUKEE, WI 53212  
PHONE 414.272.8822  
FAX 414.272.8812

MOODY NOLAN INC  
300 SPRUCE STREET, SUITE 300  
COLUMBUS, OH 43215  
PHONE 614.461.4664  
FAX 614.280.8881

## CIVIL ENGINEER

GRAEF, ANHALT, SCHLOEMER & ASSOCIATES, INC.  
ONE HONEY CREEK CORP. CTR.  
125 S. 84TH STREET, SUITE 401  
MILWAUKEE, WI 53214  
PHONE 414.259.1500  
FAX 414.259.0037

## LANDSCAPE ARCHITECT

OLIN PARTNERSHIP  
150 S. INDEPENDENCE MALL W. PUBLIC  
LEDGER BUILDING SUITE 1123  
PHILADELPHIA, PA 19106  
PHONE 215.440.0030  
FAX 215.440.0041

## PLUMBING ENGINEER

ARNOLD AND O'SHERIDAN  
111 DEMING WAY  
MADISON, WI 53717  
PHONE 608.821.8500  
FAX 608.821.8501

## STRUCTURAL ENGINEER

GRAEF, ANHALT, SCHLOEMER & ASSOCIATES, INC.  
ONE HONEY CREEK CORP. CTR.  
125 S. 84TH STREET, SUITE 401  
MILWAUKEE, WI 53214  
PHONE 414.259.1500  
FAX 414.259.0037

## MECHANICAL ENGINEER

ARNOLD AND O'SHERIDAN  
111 DEMING WAY  
MADISON, WI 53717  
PHONE 608.821.8500  
FAX 608.821.8501

## ELECTRICAL ENGINEER

ARNOLD AND O'SHERIDAN  
4125 N. 124TH STREET  
BROOKFIELD, WI. 53005-1837  
PHONE 262.783.6130  
FAX 262.783.5121

## AUDIO/VISUAL

PROFESSIONAL AUDIO DESIGNS, INC.  
11707B WEST DEARBORN AVENUE  
WAUWATOSA, WI 53226  
PHONE 414.476.1011  
FAX 414.476.7477

## FOOD SERVICE

RICCA NEWMARK DESIGN  
9430 TURNBERRY DRIVE  
POTOMAC, MD 20854  
PHONE 303.221.0500  
FAX 303.221.0600

# SHEET INDEX

## TITLE/ GENERAL INFORMATION

T101 TITLE SHEET AND SHEET INDEX

## CIVIL / LANDSCAPE

C100 CONCEPTUAL UTILITY PLAN  
L101 LANDSCAPE PLAN  
L102 GRADING PLAN  
L103 PLANTING PLAN  
L104 PLANTING SCHEDULE

State of Wisconsin  
Department of Administration  
Division of State Facilities

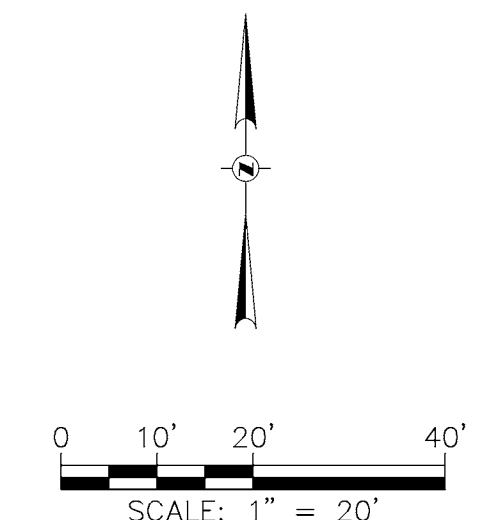
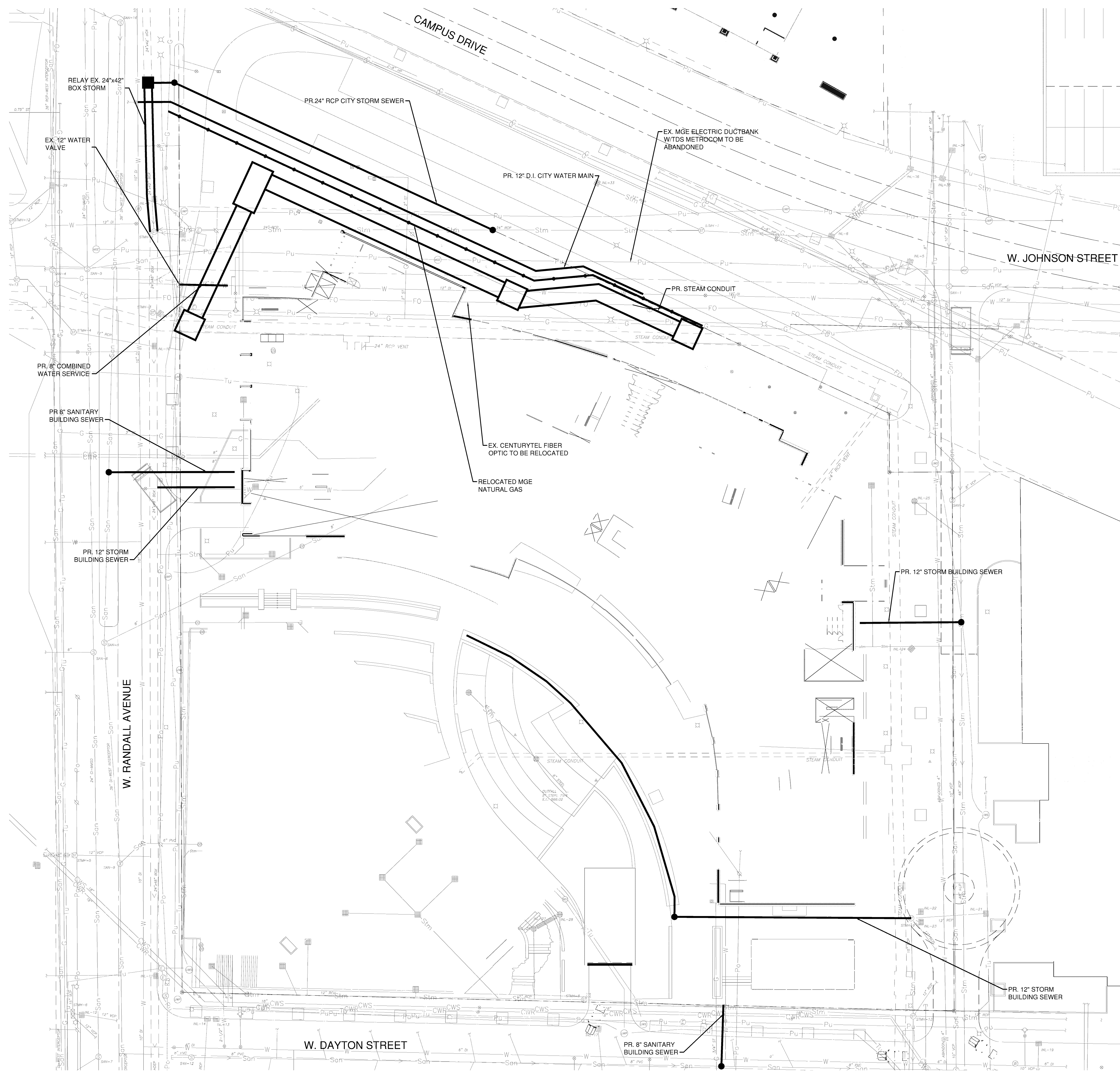


Agency / institution: UNIVERSITY OF WISCONSIN - MADISON

Project Title: WISC. UNION REDEVELOPMENT  
NEW SOUTH CAMPUS UNION  
Project Location: 1808 W DAYTON STREET  
MADISON, WI 53715  
Sheet Title: TITLE SHEET & SHEET INDEX

No.	Date:	By:	Description:

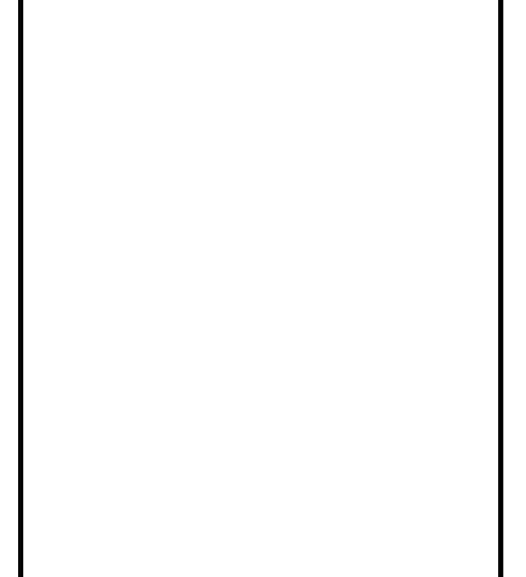
Scale	NTS
Graphic Scale	
DSF Number	07E4J
Set Type	GDP SUBMITTAL
Date Issued	10-1-08
Sheet Number	T101



Consultant:  
**GRAEF ANHALT SCHLOEMER**  
 and Associates, Inc.  
 One Henry Cook Corporate Center  
 125 South 84th Street, Suite 401  
 Milwaukee, Wisconsin 53214  
 P: 414.259.1500 F: 414.259.0337  
 Web Site: www.gaschlo.com

Project Title:  
**WISC. UNION REDEVELOPMENT  
 NEW SOUTH CAMPUS UNION**  
 Project Location:  
**1308 W. DAYTON STREET  
 MADISON, WI 53715**  
 Sheet Title:  
**CONCEPTUAL UTILITY PLAN**

State of Wisconsin  
 Department of Administration  
 Division of State Facilities



UNIVERSITY OF WISCONSIN - MADISON

Revisions:  
 No. Date: By: Description:

Scale: **AS SHOWN**  
 Graphic Scale: 0' 5' 10' 20' 30'

DSF Number: **07E4J**  
 Set Type: **GDP SUBMITTAL**  
 Date Issued: **10-1-08**

Sheet Number: **C100**

WORKSHOP © **MOODY NOLAN**  
 ASSOCIATED ARCHITECTS

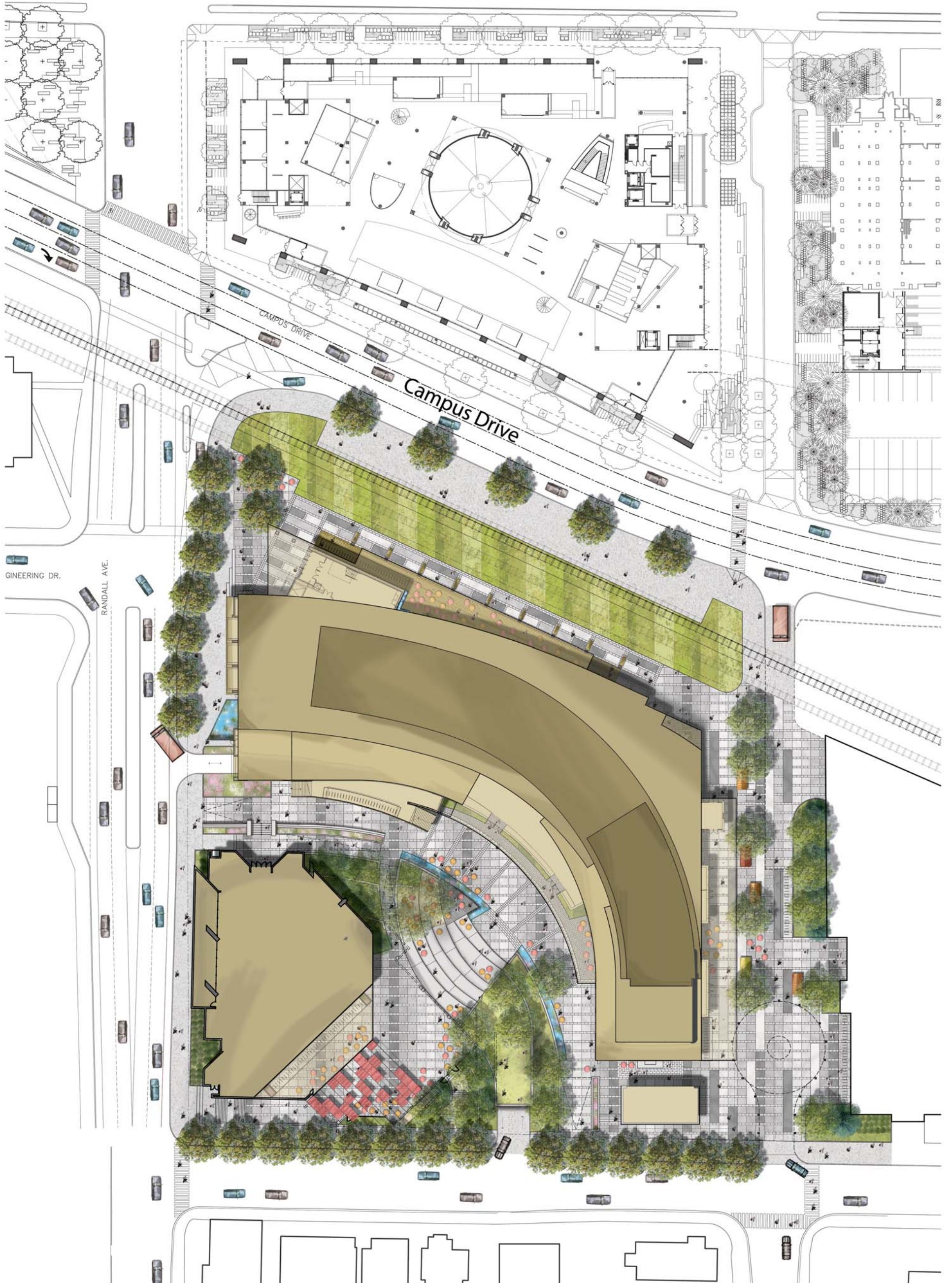








# University Avenue

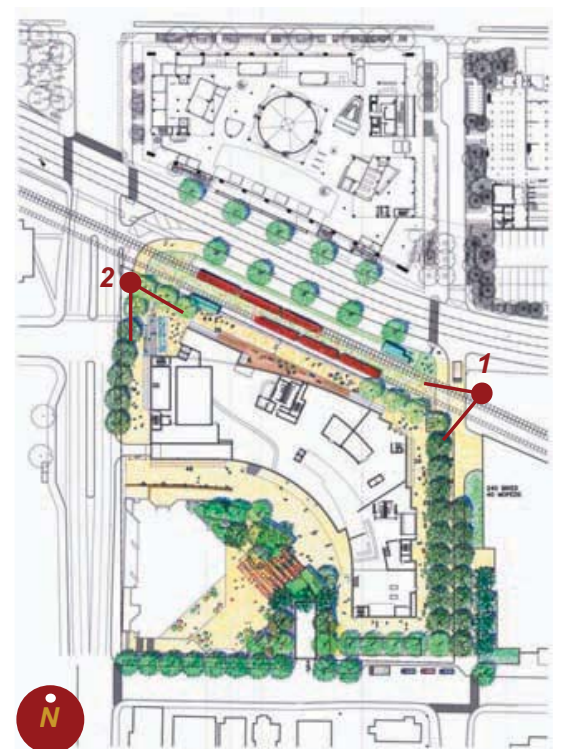




1. CAMPUS DRIVE ELEVATION LOOKING SOUTH



2. NORTH-WEST ENTRY AT RANDALL AND CAMPUS DRIVE



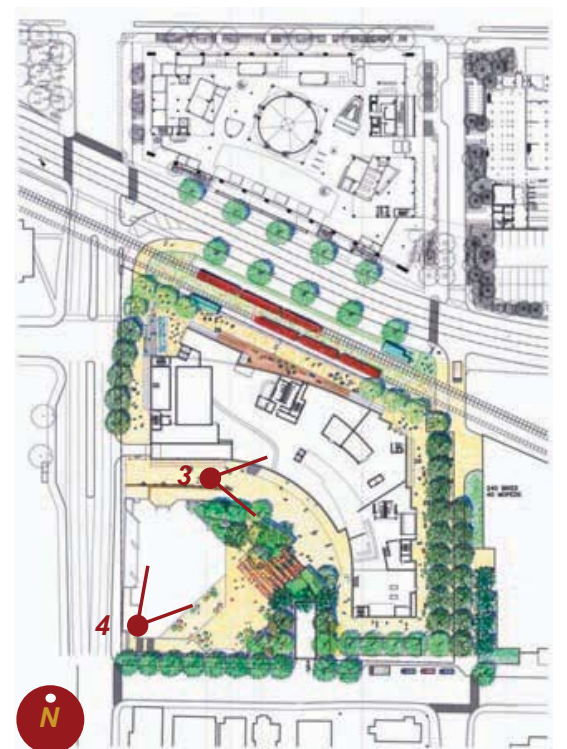




3. TERRACE VIEW LOOKING EAST



4. OVERALL TERRACE VIEW LOOKING NORTH-EAST

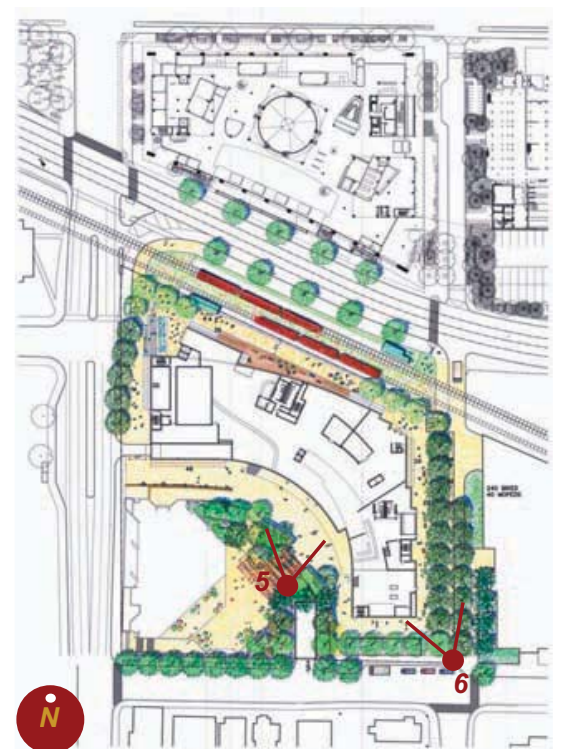


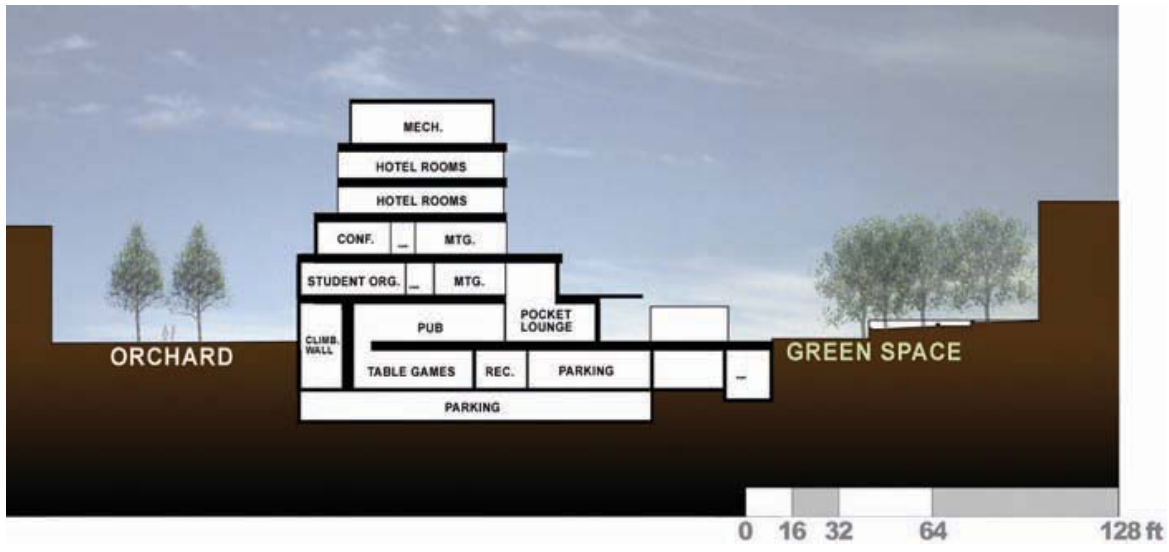


5. TERRACE VIEW LOOKING NORTH

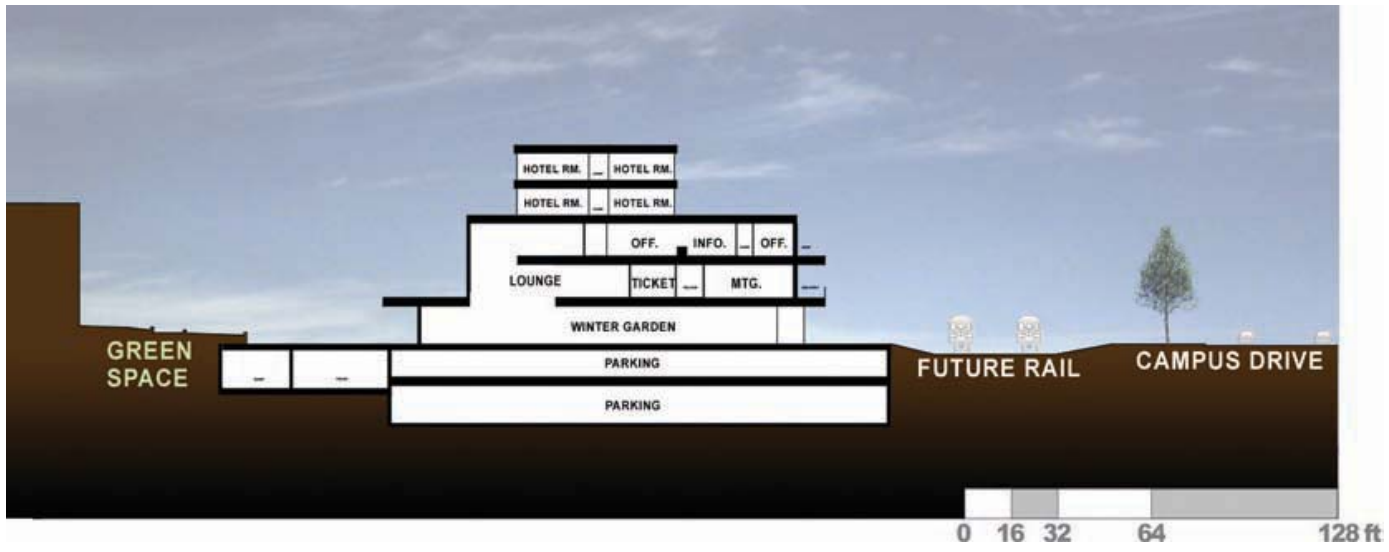


6. ORCHARD STREET LOOKING NORTH

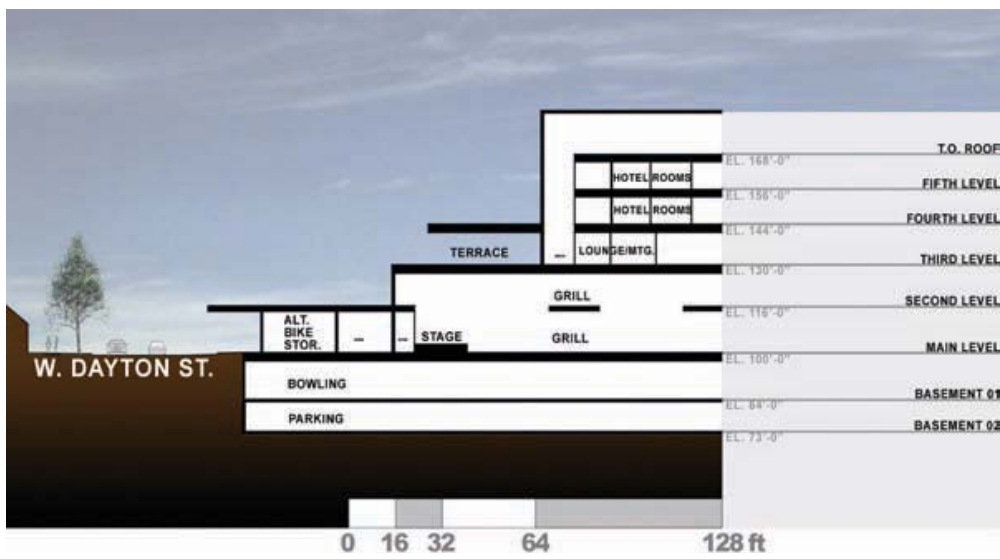




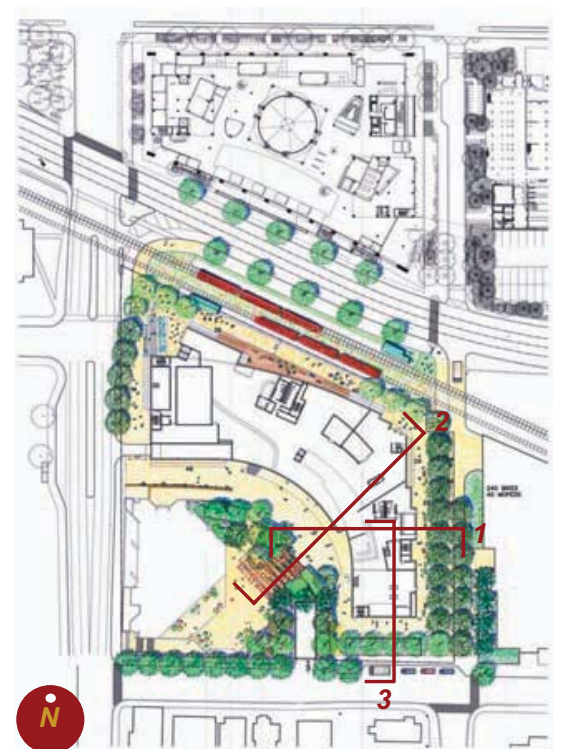
1. EAST-WEST ALONG ORCHARD STREET

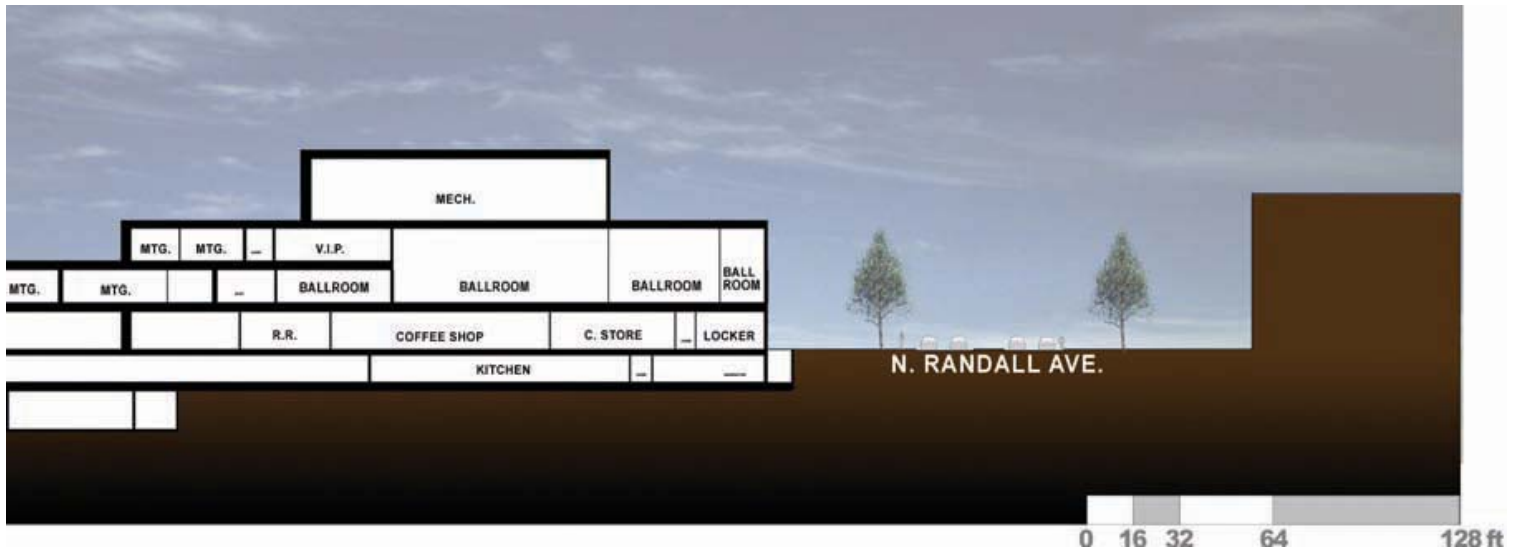


2. NORTH-SOUTH THROUGH PLAZA

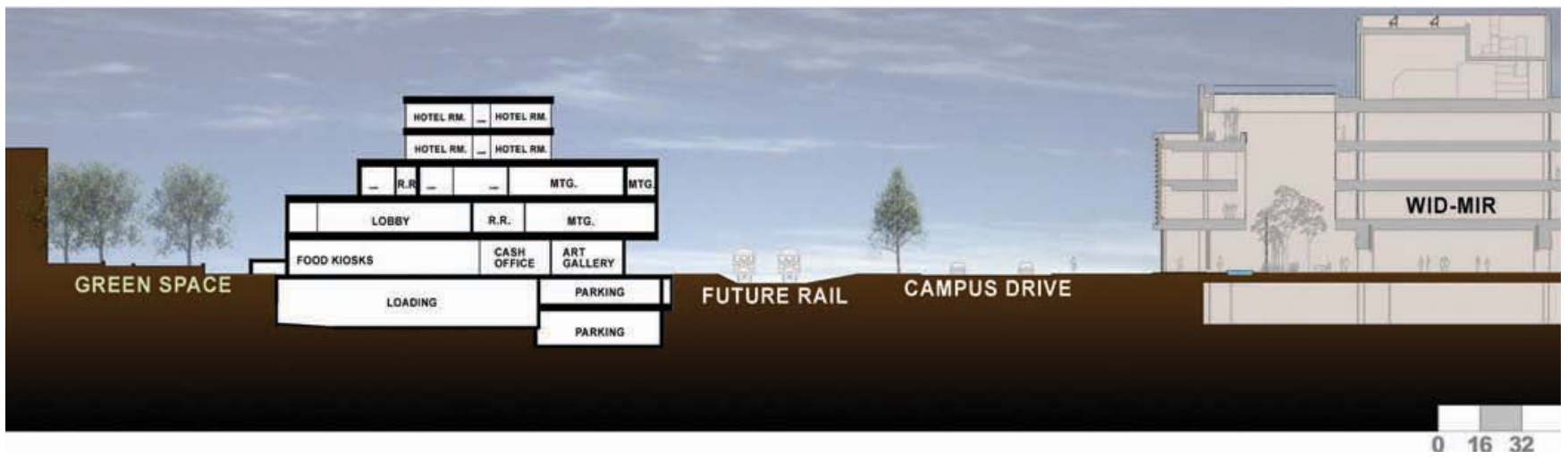


3. NORTH-SOUTH ALONG DAYTON





4. PARTIAL EAST-WEST THROUGH RANDALL



5. NORTH-SOUTH ALONG CAMPUS DRIVE

