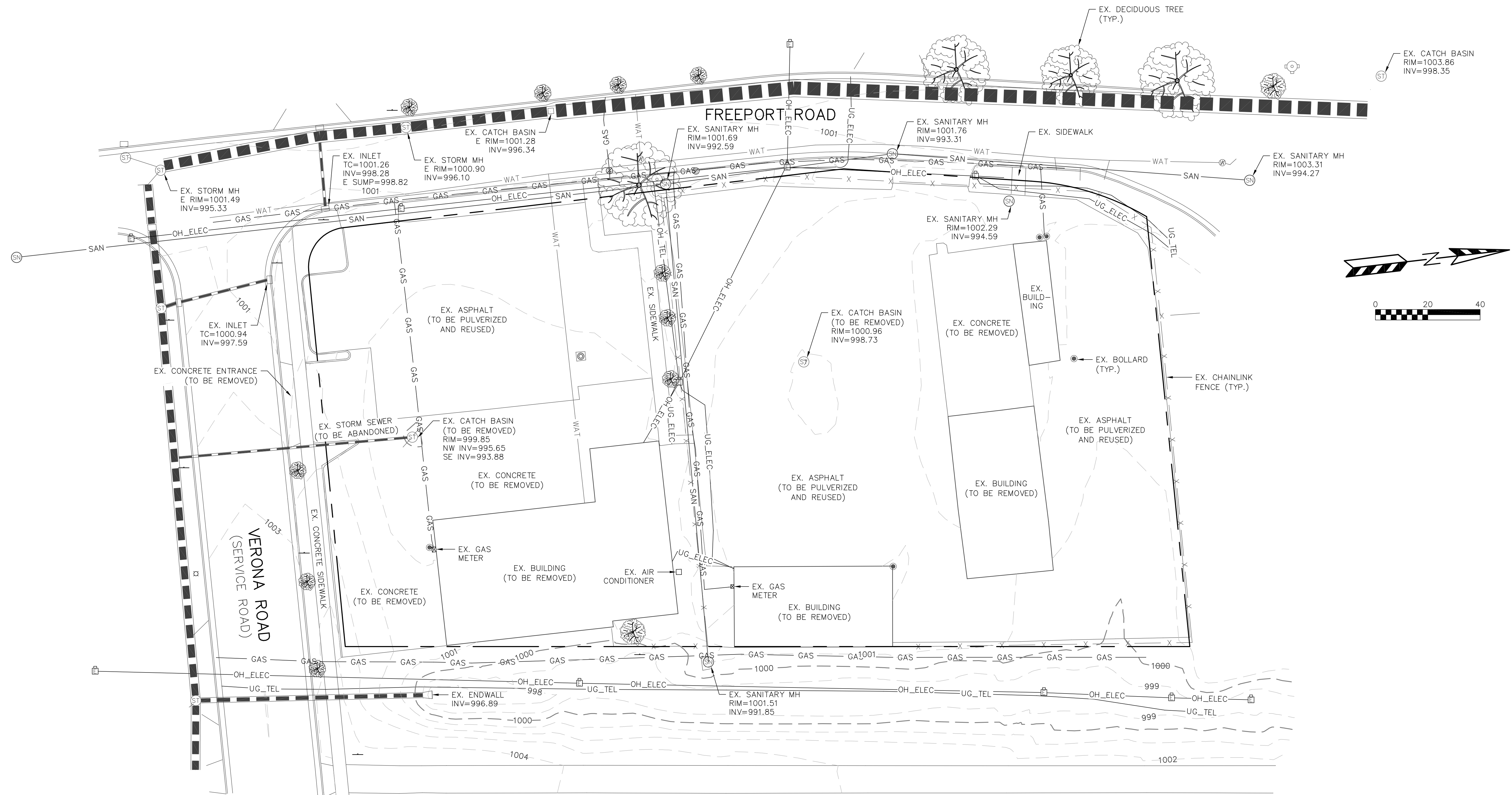


1901-1909 FREEPORT ROAD - CITY OF MADISON
 EXISTING SITE/DEMOLITION PLAN
 EXHIBIT: 2
 DATED: NOVEMBER 20, 2012

QUAM ENGINEERING, LLC
 Residential and Commercial Site Design Consultants

 www.quamengineering.com

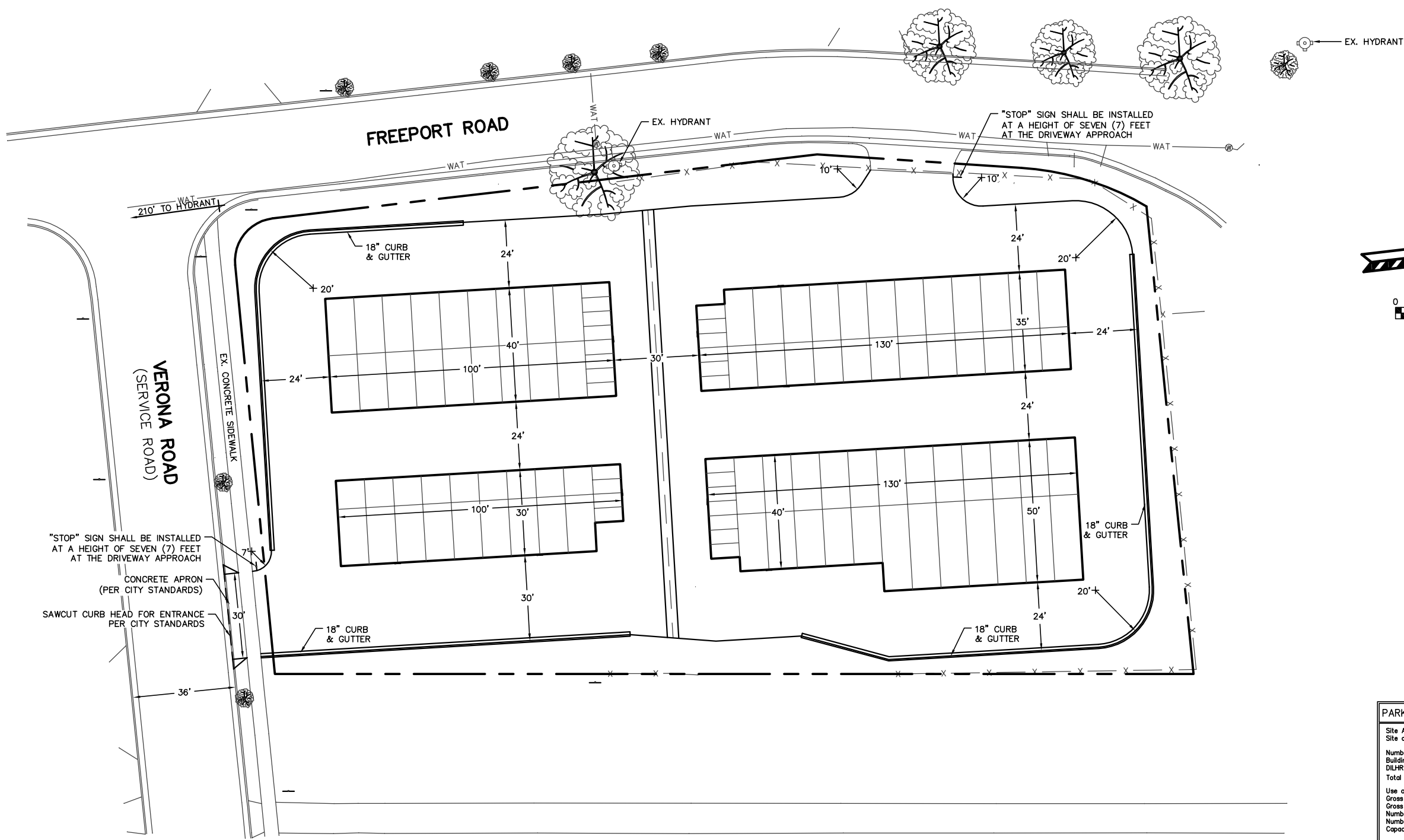
4604 Siggelkow Road, Suite A - McFarland, Wisconsin 53558
 Phone (608) 838-7750; Fax (608) 838-7752



1901-1909 FREEPORT ROAD - CITY OF MADISON
EXISTING SITE/DEMOLITION PLAN
EXHIBIT: 2
DATED: NOVEMBER 20, 2012

QUAM ENGINEERING, LLC
Residential and Commercial Site Design Consultants

 www.quamengineering.com
4604 Siggelkow Road, Suite A - McFarland, Wisconsin 53558
Phone (608) 838-7750; Fax (608) 838-7752



PARKING LOT PLAN SITE INFORMATION BLOCK

Site Address 1901 FREEPORT ROAD
 Site acreage (total) 1.28 ACRES

Number of building stories (above grade) ONE
 Building height 12 FEET
 DILHR type of construction (new structures or additions) TYPE IIB
 Total square footage of building 17,250

Use of property MINI-WAREHOUSE
 Gross square feet of office N/A
 Gross square feet of retail area N/A
 Number of employees in warehouse N/A
 Number of employees in production N/A
 Capacity of restaurant/place of assembly N/A

Number of bicycle stalls shown N/A

Number of Parking stalls:

	SHOWN
Small Car	0
Large Car	0
Accessible	0
Total	0

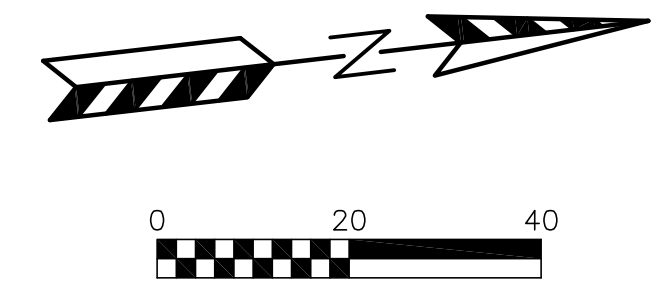
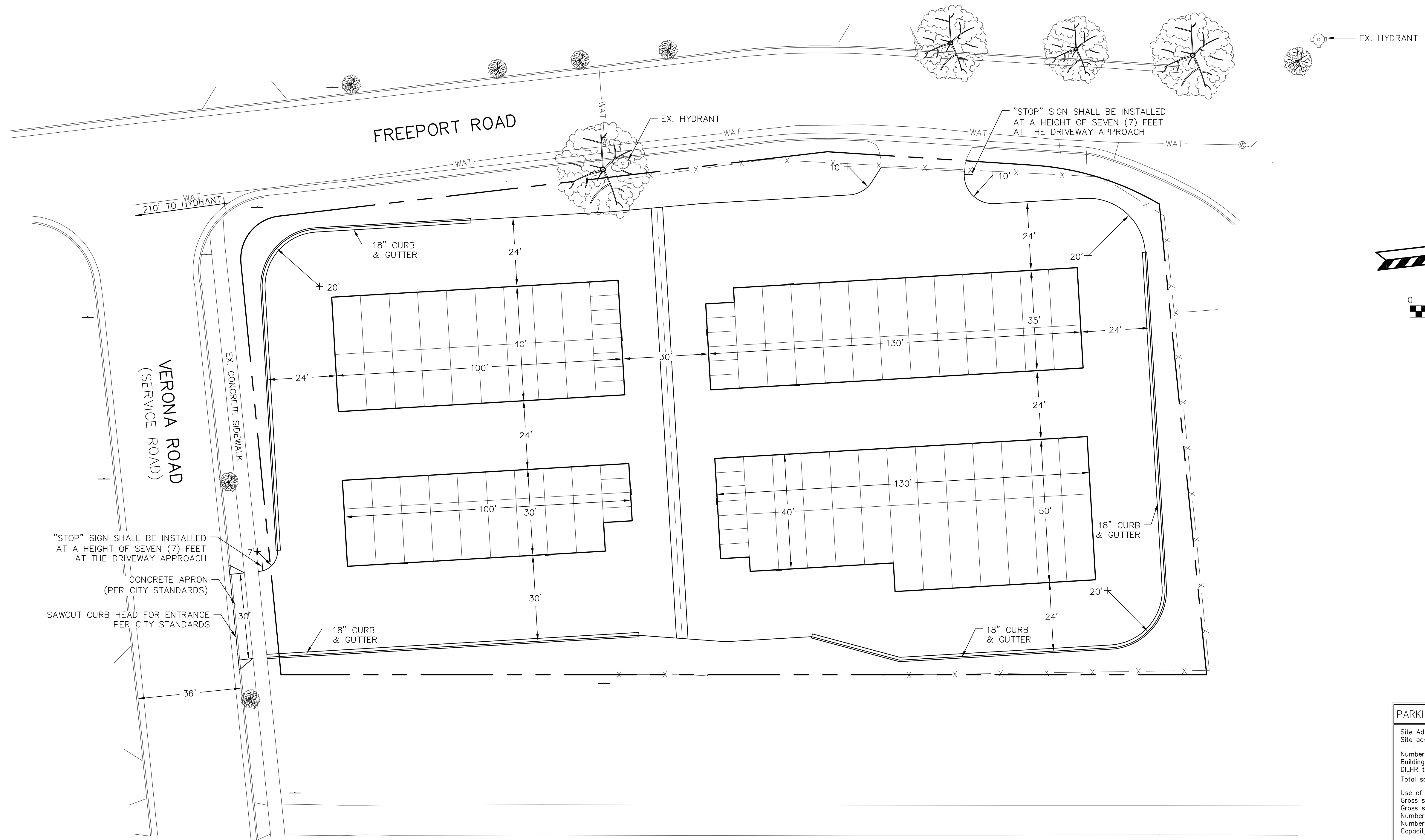
Number of trees shown N/A

1901-1909 FREEPORT ROAD - CITY OF MADISON
 FIRE LANE AND LANDSCAPING PLAN
 PAGE: 4 OF 4
 DATED: NOVEMBER 20, 2012

QUAM ENGINEERING, LLC
 Residential and Commercial Site Design Consultants

 www.quamengineering.com

4604 Siggelkow Road, Suite A - McFarland, Wisconsin 53558
 Phone (608) 838-7750; Fax (608) 838-7752



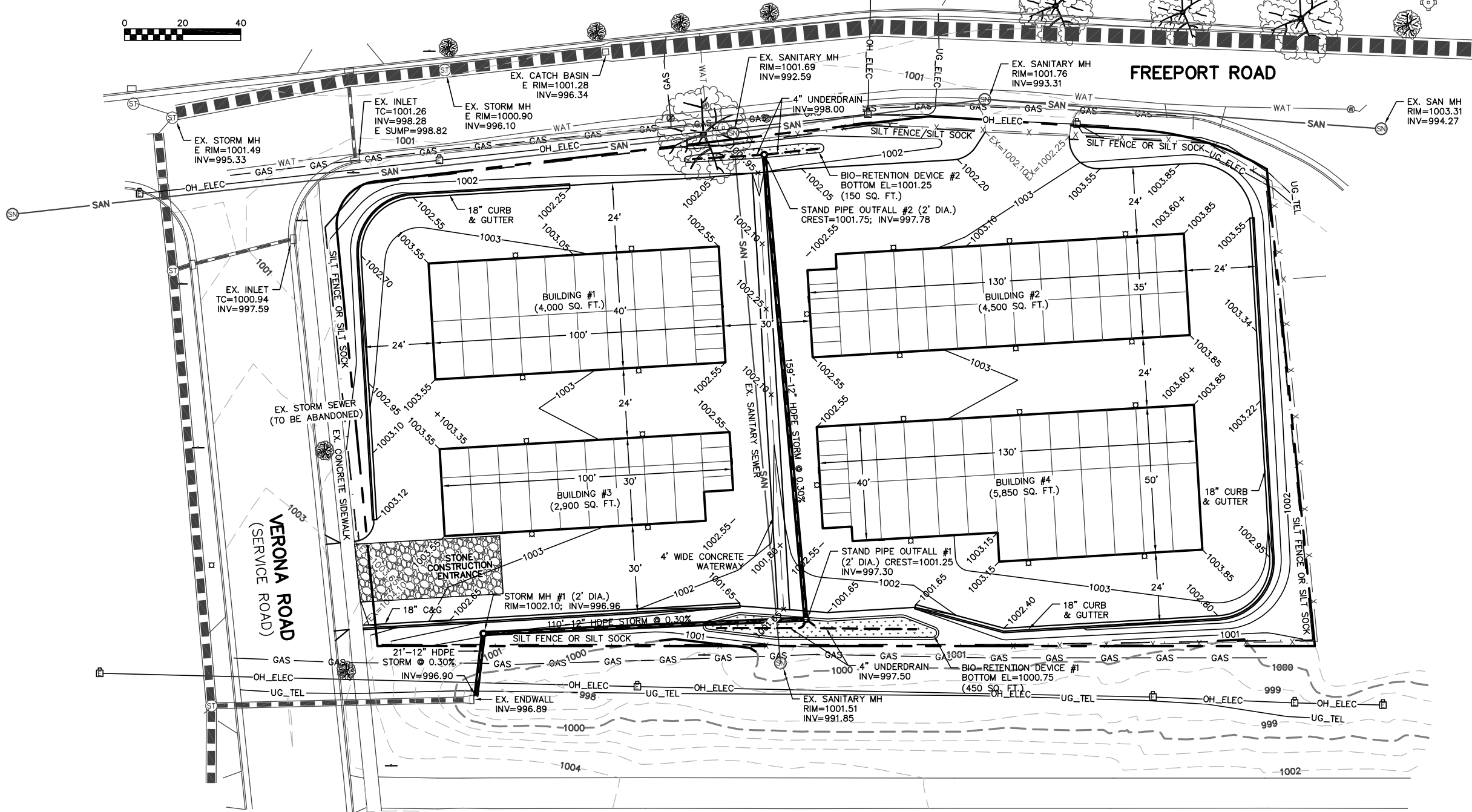
PARKING LOT PLAN SITE INFORMATION BLOCK	
Site Address	1901 FREEPORT ROAD
Site acreage (total)	1.28 ACRES
Number of building stories (above grade)	ONE
Building height	12 FEET
DILHR type of construction (new structures or additions)	TYPE II B
Total square footage of building	17,250
Use of property	MINI-WAREHOUSE
Gross square feet of office	N/A
Gross square feet of retail area	N/A
Number of employees in warehouse	N/A
Number of employees in production	N/A
Capacity of restaurant/place of assembly	N/A
Number of bicycle stalls shown	N/A
Number of Parking stalls:	
Small Car	0
Large Car	0
Accessible	0
Total	0
Number of trees shown	N/A

1901-1909 FREEPORT ROAD - CITY OF MADISON
 FIRE LANE AND LANDSCAPING PLAN
 PAGE: 4 OF 4
 DATED: NOVEMBER 20, 2012



www.quamengineering.com
 4604 Siggelkow Road, Suite A - McFarland, Wisconsin 53558
 Phone (608) 838-7750; Fax (608) 838-7752

QUAM ENGINEERING, LLC 4604 Siggelkow Road, Suite A - McFarland, WI 53558 (608) 838-7750 \KK-07-12\KK07BASE.DWG



EROSION NOTES:
 THE STONE CONSTRUCTION ENTRANCE SHALL BE INSTALLED PRIOR TO ANY CONSTRUCTION. THE TRACKING PAD IS TO BE MAINTAINED BY THE CONTRACTOR IN A CONDITION WHICH WILL PREVENT THE TRACK OF MUD OR DRY SEDIMENT ONTO THE ADJACENT PUBLIC STREETS. SEDIMENT REACHING THE PUBLIC ROAD SHALL BE REMOVED BY STREET CLEANING (NOT HYDRAULIC FLUSHING) BEFORE THE END OF EACH WORKDAY.

EROSION CONTROL DEVICES SHALL BE INSTALLED PRIOR TO GRADING OPERATIONS AND SHALL BE PROPERLY MAINTAINED FOR MAXIMUM EFFECTIVENESS UNTIL VEGETATION IS ESTABLISHED. ALL EROSION CONTROL MEASURES AND STRUCTURES SERVING THE SITE MUST BE INSPECTED AT LEAST WEEKLY OR WITHIN 24 HOURS OF A 0.5 INCH RAIN EVENT. ALL MAINTENANCE WILL FOLLOW AN INSPECTION WITHIN 24 HOURS.

CUT AND FILL SLOPES SHALL BE NO GREATER THAN 3:1.
 EROSION CONTROL IS THE RESPONSIBILITY OF THE CONTRACTOR UNTIL ACCEPTANCE OF THIS PROJECT. EROSION CONTROL MEASURES AS SHOWN SHALL BE THE MINIMUM PRECAUTIONS THAT WILL BE ALLOWED. THE CONTRACTOR SHALL BE RESPONSIBLE FOR RECOGNIZING AND CORRECTING ALL EROSION CONTROL PROBLEMS THAT ARE A RESULT OF CONSTRUCTION ACTIVITIES. ADDITIONAL EROSION CONTROL MEASURES, AS REQUESTED IN WRITING BY THE STATE OR LOCAL INSPECTORS, OR THE DEVELOPER'S ENGINEER, SHALL BE INSTALLED WITHIN 24 HOURS.

TIME SCHEDULE:
 APRIL 15, 2013 INSTALL INITIAL EROSION CONTROL DEVICES.
 APRIL 16 - SEPTEMBER 15, 2013 CONSTRUCT BUILDINGS AND DRIVE AISLES AND RESTORE PVIOUSLY DISTURBED AREAS.

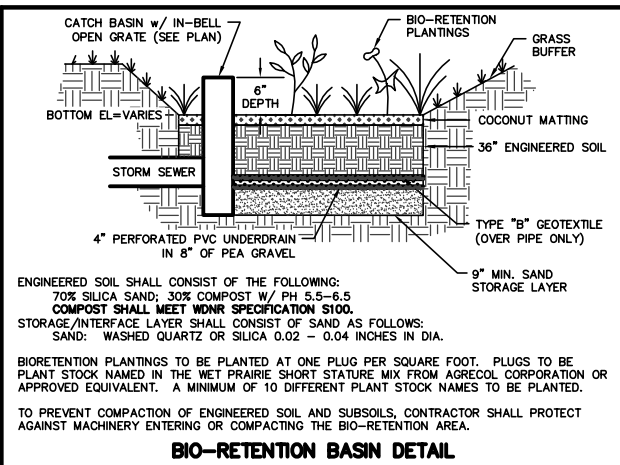
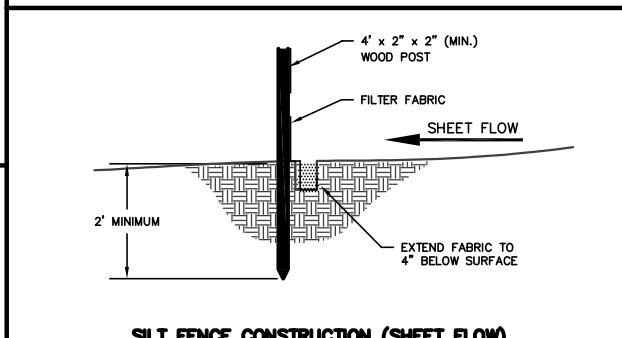
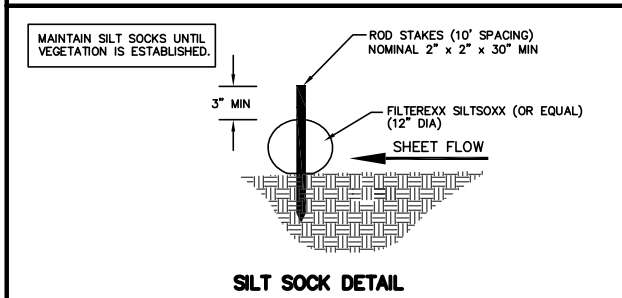
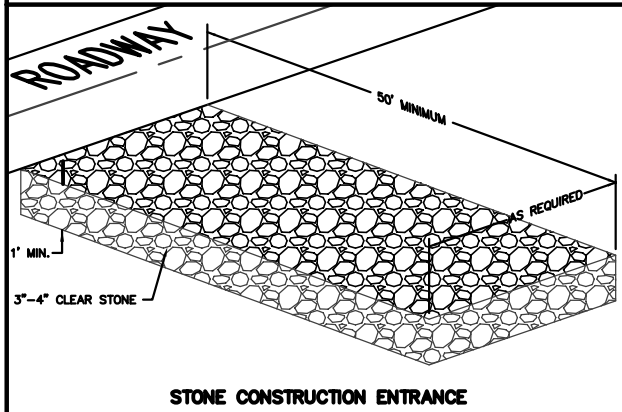
RESTORATION NOTES:
 ALL PVIOUSLY DISTURBED AREAS SHALL RECEIVE A MINIMUM OF FOUR (4) INCHES OF TOPSOIL, SEED AND MULCH. ALL PVIOUSLY DISTURBED AREAS SHALL RECEIVE FERTILIZER EXCEPT NATIVE PLANTING AREAS. RESTORATION WILL OCCUR AS SOON AFTER THE DISTURBANCE AS PRACTICAL. SEED MIXTURE 40 SHALL BE USED ON ALL DISTURBED AREAS. MIXTURES SHALL BE IN ACCORDANCE WITH SECTION 630 OF D.O.T. SPECIFICATIONS. AN EQUAL AMOUNT OF ANNUAL RYEGRASS SHALL BE ADDED TO THE MIX.

SEED MIXTURES SHALL BE APPLIED AT THE RATE OF FOUR (4) POUNDS PER 1,000 SQUARE FEET. FERTILIZER SHALL BE APPLIED AT THE RATE OF FOUR (4) POUNDS PER 1,000 SQUARE FEET. MULCH SHALL CONSIST OF HAY OR STRAW APPLIED AT THE RATE OF 2 TONS PER ACRE.

FERTILIZER SHALL MEET THE MINIMUM REQUIREMENTS THAT FOLLOW: NITROGEN, NOT LESS THAN 16%; PHOSPHORIC ACID, NOT LESS THAN 8%; POTASH, NOT LESS THAN 8%.

OWNER:
 JAMES HOTTMAN
 1901 FREEPORT ROAD
 MADISON, WI 53711

ENGINEER:
 QUAM ENGINEERING, LLC
 ATTN: RYAN QUAM
 4604 SIGGELKOW ROAD, SUITE A
 MCFARLAND, WI 53558



ENGINEERED SOIL SHALL CONSIST OF THE FOLLOWING:
 70% SILICA SAND; 30% COMPOST W/ PH 5.5-6.5
 COMPOST SHALL MEET MNR SPECIFICATION S100.
 STORAGE/INTERFACE LAYER SHALL CONSIST OF SAND AS FOLLOWS:
 SAND: WASHED QUARTZ OR SILICA 0.02 - 0.04 INCHES IN DIA.

BIORETENTION PLANTINGS TO BE PLANTED AT ONE PLUG PER SQUARE FOOT. PLUGS TO BE PLANT STOCK NAMED IN THE WET PRAIRIE SHORT STATURE MIX FROM AGRECOL CORPORATION OR APPROVED EQUIVALENT. A MINIMUM OF 10 DIFFERENT PLANT STOCK NAMES TO BE PLANTED.

TO PREVENT COMPACTION OF ENGINEERED SOIL AND SUBSOILS, CONTRACTOR SHALL PROTECT AGAINST MACHINERY ENTERING OR COMPACTING THE BIO-RETENTION AREA.

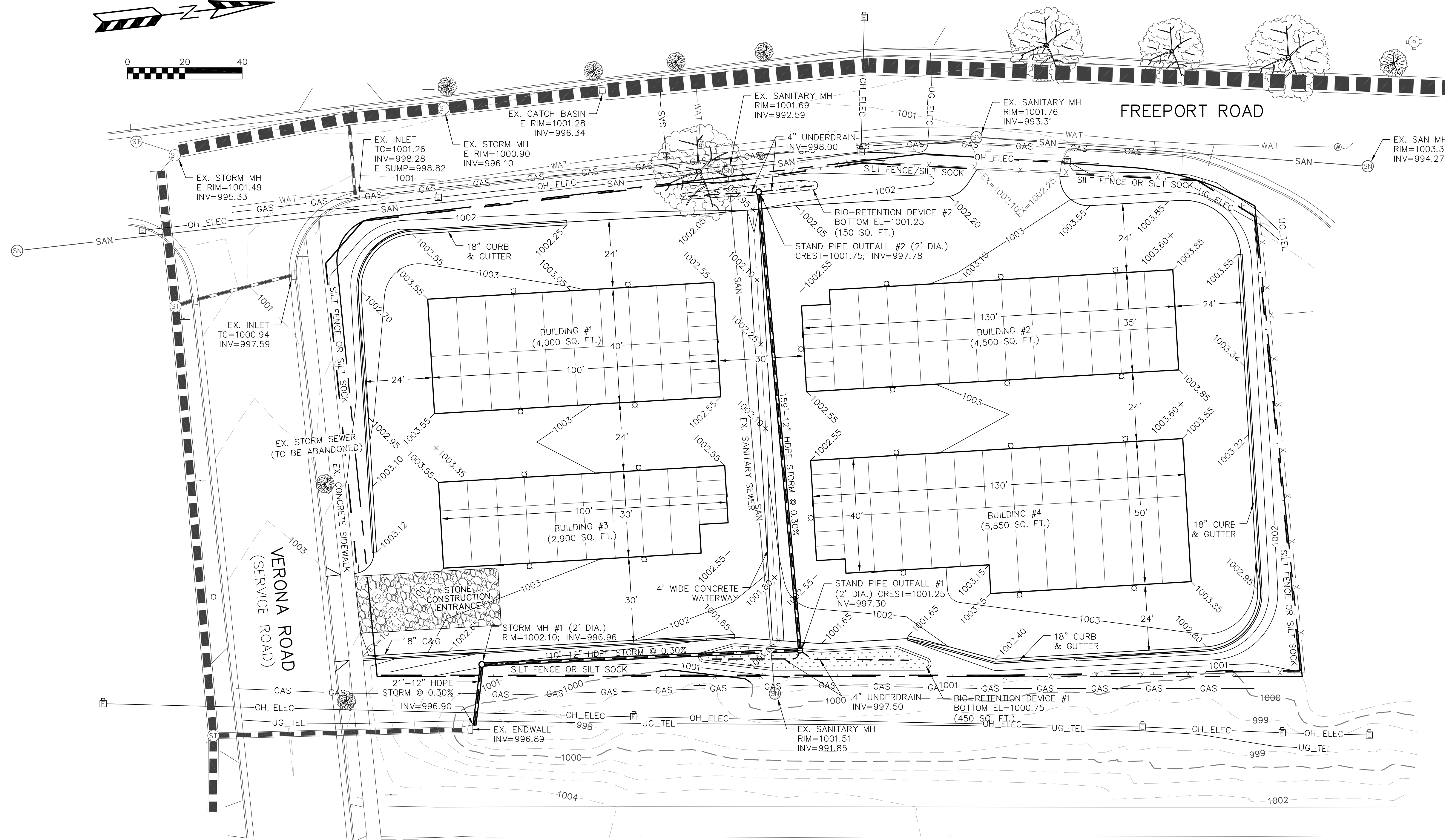
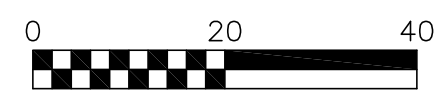
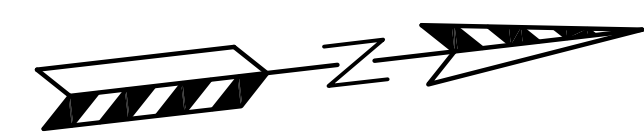
BIO-RETENTION BASIN DETAIL

TO OBTAIN LOCATION OF PARTICIPANTS' UNDERGROUND FACILITIES BEFORE YOU DIG IN WISCONSIN
CALL DIGGERS HOTLINE
 1-800-242-8511
 TOLL FREE
 TDD(FOR THE HEARING IMPAIRED)(800)542-2289
 WIS. STATUTE 182.0175 (1974)
 REQUIRES MIN. OF 3 WORK DAYS
 NOTICE BEFORE YOU EXCAVATE

1901-1909 FREEPORT ROAD - CITY OF MADISON
 GRADING AND EROSION CONTROL PLAN
 EXHIBIT: 4
 DATED: NOVEMBER 20, 2012

QUAM ENGINEERING, LLC
 Residential and Commercial Site Design Consultants

 www.quamengineering.com
 4604 Siggelkow Road, Suite A - McFarland, Wisconsin 53558
 Phone (608) 838-7750; Fax (608) 838-7752



EROSION NOTES:
 THE STONE CONSTRUCTION ENTRANCE SHALL BE INSTALLED PRIOR TO ANY CONSTRUCTION. THE TRACKING PAD IS TO BE MAINTAINED BY THE CONTRACTOR IN A CONDITION, WHICH WILL PREVENT THE TRACK OF MUD OR DRY SEDIMENT ONTO THE ADJACENT PUBLIC STREETS. SEDIMENT REACHING THE PUBLIC ROAD SHALL BE REMOVED BY STREET CLEANING (NOT HYDRAULIC FLUSHING) BEFORE THE END OF EACH WORKDAY.

EROSION CONTROL DEVICES SHALL BE INSTALLED PRIOR TO GRADING OPERATIONS AND SHALL BE PROPERLY MAINTAINED FOR MAXIMUM EFFECTIVENESS UNTIL VEGETATION IS ESTABLISHED. ALL EROSION CONTROL MEASURES AND STRUCTURES SERVING THE SITE MUST BE INSPECTED AT LEAST WEEKLY OR WITHIN 24 HOURS OF A 0.5 INCH RAIN EVENT. ALL MAINTENANCE WILL FOLLOW AN INSPECTION WITHIN 24 HOURS.

CUT AND FILL SLOPES SHALL BE NO GREATER THAN 3:1.
 EROSION CONTROL IS THE RESPONSIBILITY OF THE CONTRACTOR UNTIL ACCEPTANCE OF THIS PROJECT. EROSION CONTROL MEASURES AS SHOWN SHALL BE THE MINIMUM PRECAUTIONS THAT WILL BE ALLOWED. THE CONTRACTOR SHALL BE RESPONSIBLE FOR RECOGNIZING AND CORRECTING ALL EROSION CONTROL PROBLEMS THAT ARE A RESULT OF CONSTRUCTION ACTIVITIES. ADDITIONAL EROSION CONTROL MEASURES, AS REQUESTED IN WRITING BY THE STATE OR LOCAL INSPECTORS, OR THE DEVELOPER'S ENGINEER, SHALL BE INSTALLED WITHIN 24 HOURS.

TIME SCHEDULE:
 APRIL 15, 2013 INSTALL INITIAL EROSION CONTROL DEVICES.
 APRIL 16 - SEPTEMBER 15, 2013 CONSTRUCT BUILDINGS AND DRIVE AISLES AND RESTORE PVIOUSLY DISTURBED AREAS.

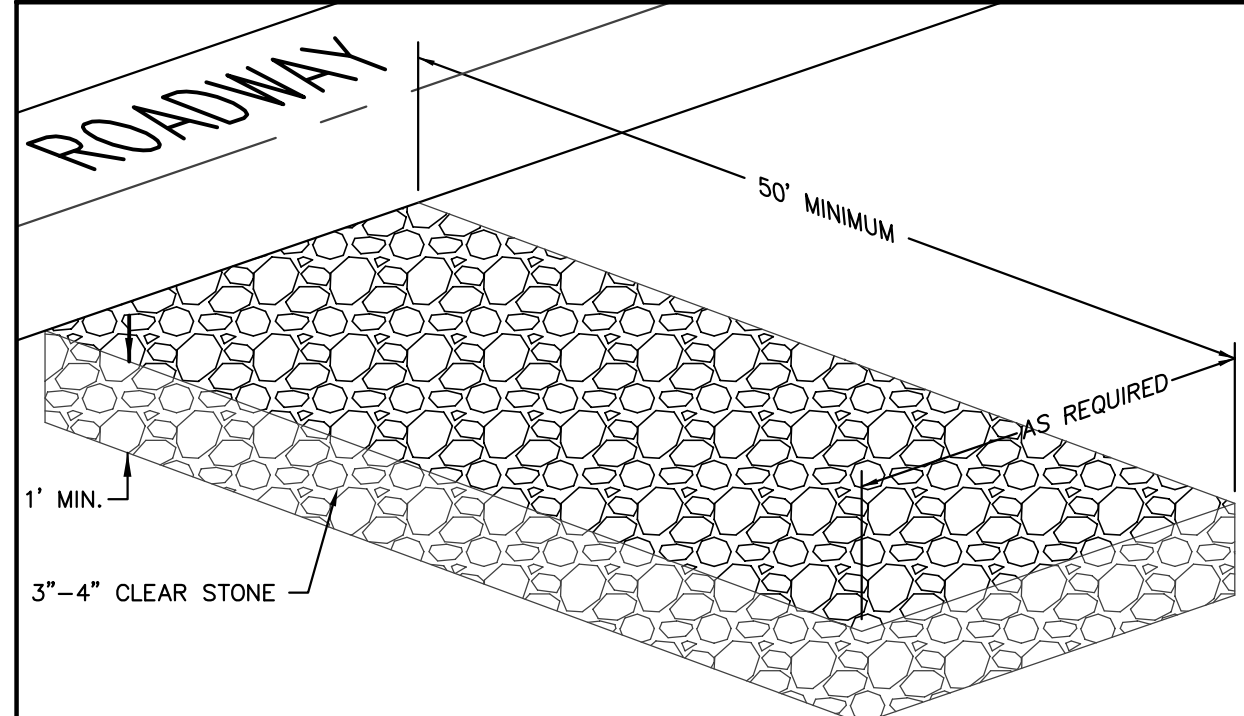
RESTORATION NOTES:
 ALL PVIOUSLY DISTURBED AREAS SHALL RECEIVE A MINIMUM OF FOUR (4) INCHES OF TOPSOIL, SEED AND MULCH. ALL PVIOUSLY DISTURBED AREAS SHALL RECEIVE FERTILIZER EXCEPT NATIVE PLANTING AREAS. RESTORATION WILL OCCUR AS SOON AFTER THE DISTURBANCE AS PRACTICAL. SEED MIXTURE 40 SHALL BE USED ON ALL DISTURBED AREAS. MIXTURES SHALL BE IN ACCORDANCE WITH SECTION 630 OF D.O.T. SPECIFICATIONS. AN EQUAL AMOUNT OF ANNUAL RYEGRASS SHALL BE ADDED TO THE MIX.

SEED MIXTURES SHALL BE APPLIED AT THE RATE OF FOUR (4) POUNDS PER 1,000 SQUARE FEET. FERTILIZER SHALL BE APPLIED AT THE RATE OF FOUR (4) POUNDS PER 1,000 SQUARE FEET. MULCH SHALL CONSIST OF HAY OR STRAW APPLIED AT THE RATE OF 2 TONS PER ACRE.

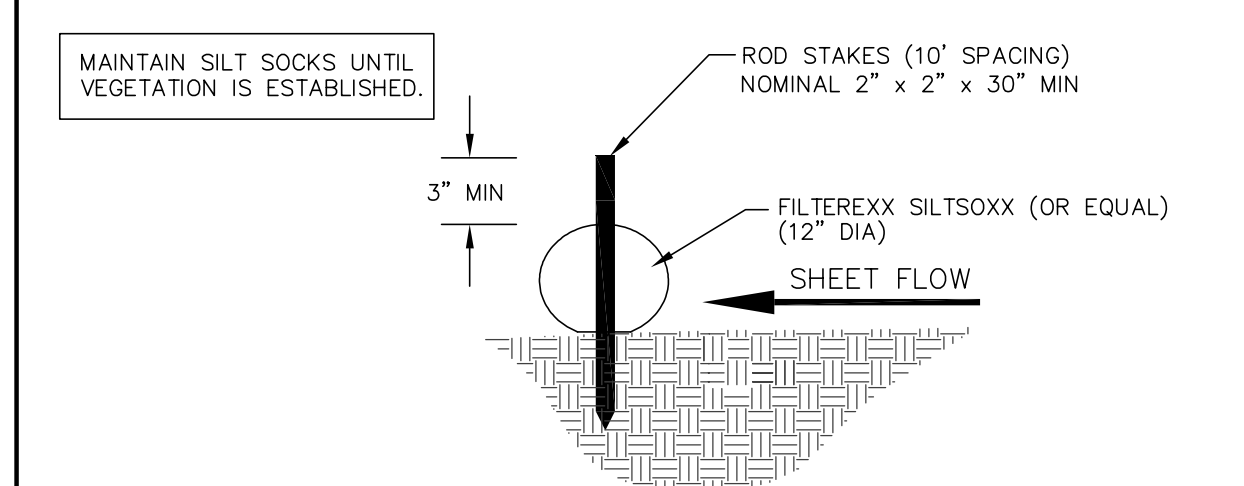
FERTILIZER SHALL MEET THE MINIMUM REQUIREMENTS THAT FOLLOW: NITROGEN, NOT LESS THAN 16%; PHOSPHORIC ACID, NOT LESS THAN 8%; POTASH, NOT LESS THAN 8%.

OWNER:
 JAMES HOTTMAN
 1901 FREEPORT ROAD
 MADISON, WI 53711

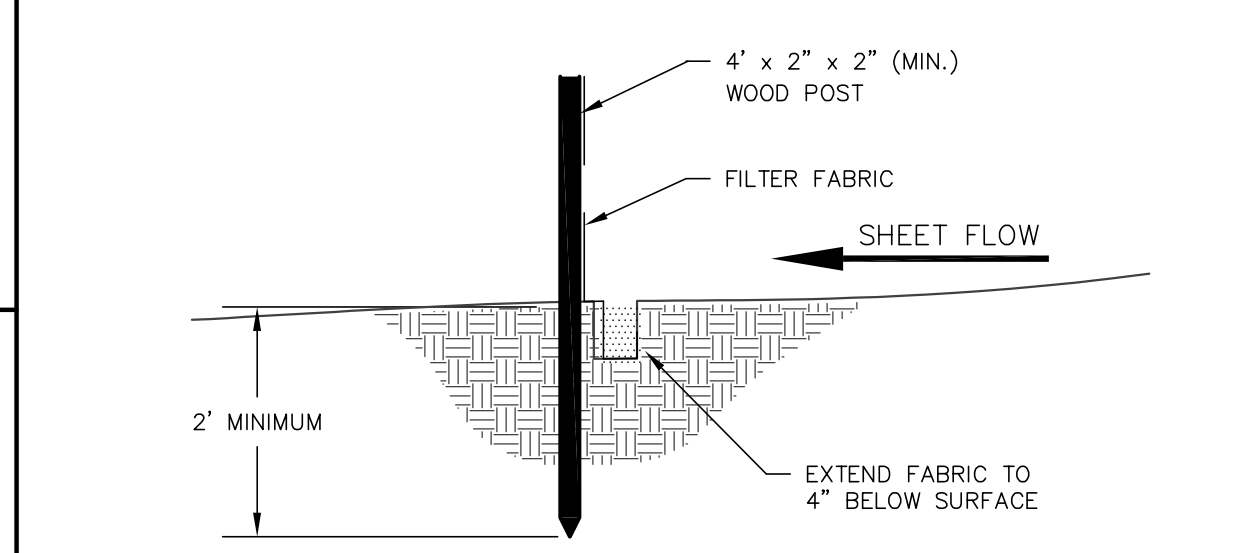
ENGINEER:
 QUAM ENGINEERING, LLC
 ATTN: RYAN QUAM
 4604 SIGGELKOW ROAD, SUITE A
 MCFARLAND, WI 53558



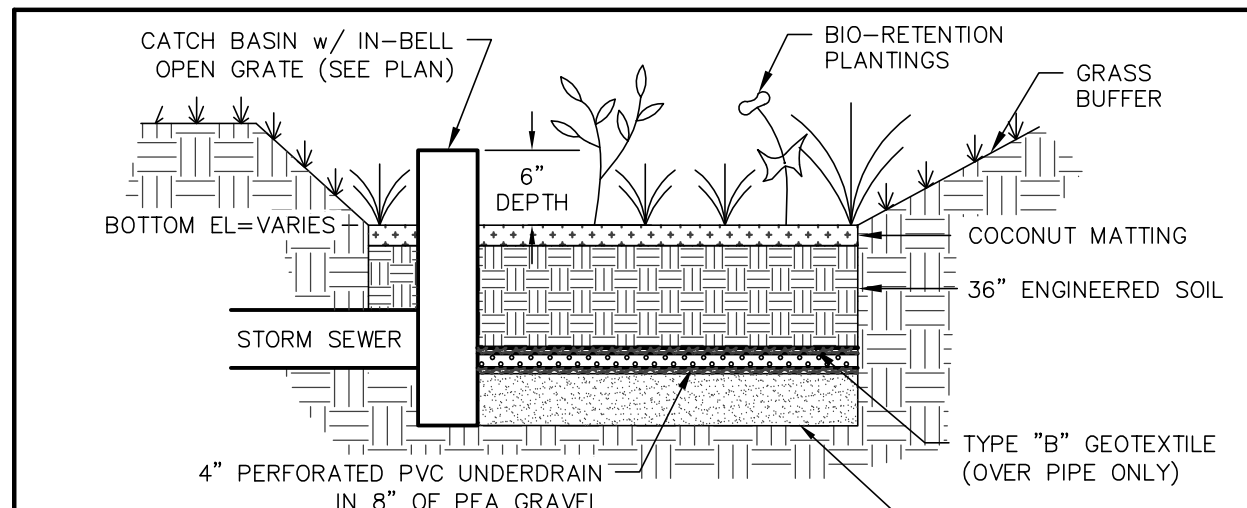
STONE CONSTRUCTION ENTRANCE



SILT SOCK DETAIL



SILT FENCE CONSTRUCTION (SHEET FLOW)



ENGINEERED SOIL SHALL CONSIST OF THE FOLLOWING:
 70% SILICA SAND; 30% COMPOST W/ PH 5.5-6.5
 COMPOST SHALL MEET MDNR SPECIFICATION S100.
 STORAGE/INTERFACE LAYER SHALL CONSIST OF SAND AS FOLLOWS:
 SAND: WASHED QUARTZ OR SILICA 0.02 - 0.04 INCHES IN DIA.

BIORETENTION PLANTINGS TO BE PLANTED AT ONE PLUG PER SQUARE FOOT. PLUGS TO BE PLANT STOCK NAMED IN THE WET PRAIRIE SHORT STATURE MIX FROM AGRECOL CORPORATION OR APPROVED EQUIVALENT. A MINIMUM OF 10 DIFFERENT PLANT STOCK NAMES TO BE PLANTED.

TO PREVENT COMPACTION OF ENGINEERED SOIL AND SUBSOILS, CONTRACTOR SHALL PROTECT AGAINST MACHINERY ENTERING OR COMPACTING THE BIO-RETENTION AREA.

BIO-RETENTION BASIN DETAIL

TO OBTAIN LOCATION OF PARTICIPANTS' UNDERGROUND FACILITIES BEFORE YOU DIG IN WISCONSIN
CALL DIGGERS HOTLINE
 1-800-242-8511
 TOLL FREE
 TDD(FOR THE HEARING IMPAIRED)(800)542-2289

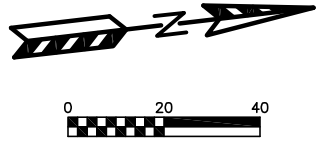
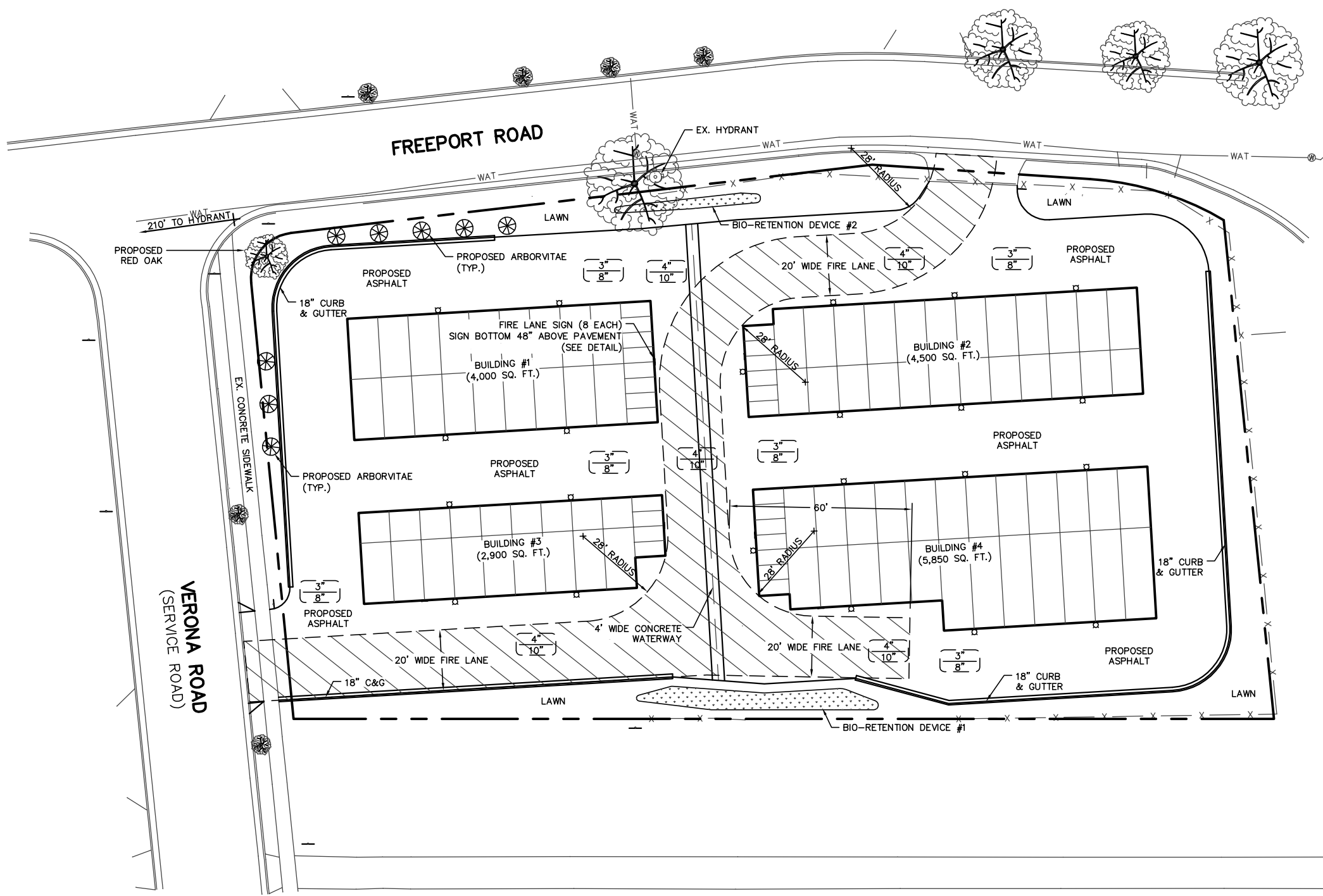
WS. STATUTE 182.0175 (1974)
 REQUIRES MIN. OF 3 WORK DAYS
 NOTICE BEFORE YOU EXCAVATE

1901-1909 FREEPORT ROAD - CITY OF MADISON
 GRADING AND EROSION CONTROL PLAN
 EXHIBIT: 4
 DATED: NOVEMBER 20, 2012

QUAM ENGINEERING, LLC
 Residential and Commercial Site Design Consultants

www.quamengineering.com

4604 Siggelkow Road, Suite A - McFarland, Wisconsin 53558
 Phone (608) 838-7750; Fax (608) 838-7752



PAVING LEGEND

$\left[\begin{array}{c} 3'' \\ 8'' \end{array} \right]$	3" ASPHALT PAVEMENT OVER 8" AGGREGATE BASE COURSE
$\left[\begin{array}{c} 4'' \\ 10'' \end{array} \right]$	4" ASPHALT PAVEMENT OVER 10" AGGREGATE BASE COURSE (IN FIRE ACCESS AISLE)



THE FIRE LANE AND ACCESS AISLE SHALL BE CONSTRUCTED TO SUPPORT A MINIMUM LOAD OF 85,000 POUNDS AND CERTIFIED IN THE FIELD BY AN APPROVED SOILS ANALYST.

LUMINAIRE SCHEDULE

SYMBOL	QTY	CATALOG #	DESCRIPTION	LAMP
□	22	E-WPAH071Z	E-CONOLIGHT BUILDING MOUNTED LUMINAIRE, 70W HPS, ADJUSTABLE CUTOFF.	ONE 70-WATT ED-17 HIGH PRESSURE SODIUM, HORIZONTAL POSITION.


TABULATION OF POINTS AND CREDITS

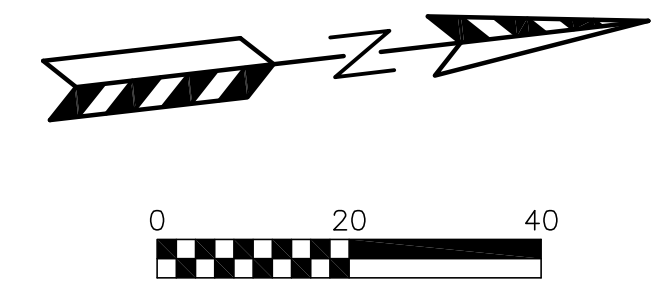
17,250=57.5 REQUIRED POINTS
300

QTY	COMMON NAME	POINTS PROVIDED
1	CANOPY TREE 	1X35=35
8	EVERGREEN SHRUB 	6X3=24
		59

1901-1909 FREEPORT ROAD - CITY OF MADISON
FIRE LANE, LANDSCAPING, AND LIGHTING PLAN
 PAGE: 4 OF 4
 DATED: NOVEMBER 20, 2012

QUAM ENGINEERING, LLC
 Residential and Commercial Site Design Consultants


 www.quamengineering.com
 4604 Siggelkow Road, Suite A - McFarland, Wisconsin 53558
 Phone (608) 838-7750; Fax (608) 838-7752

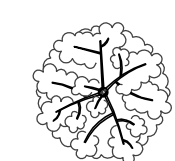
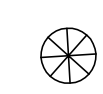


PAVING LEGEND

$\left[\begin{array}{c} 3'' \\ 8'' \end{array} \right]$	3" ASPHALT PAVEMENT OVER 8" AGGREGATE BASE COURSE
$\left[\begin{array}{c} 4'' \\ 10'' \end{array} \right]$	4" ASPHALT PAVEMENT OVER 10" AGGREGATE BASE COURSE (IN FIRE ACCESS AISLE)

THE FIRE LANE AND ACCESS AISLE SHALL BE CONSTRUCTED TO SUPPORT A MINIMUM LOAD OF 85,000 POUNDS AND CERTIFIED IN THE FIELD BY AN APPROVED SOILS ANALYST.

LUMINAIRE SCHEDULE				
SYMBOL	QTY	CATALOG #	DESCRIPTION	LAMP
□	22	E-WPAH071Z	E-CONOLIGHT BUILDING MOUNTED LUMINAIRE, 70W HPS, ADJUSTABLE CUTOFF.	ONE 70-WATT ED-17 HIGH PRESSURE SODIUM, HORIZONTAL POSITION.

TABULATION OF POINTS AND CREDITS		
17,250=57.5 REQUIRED POINTS		
300		
QTY	COMMON NAME	POINTS PROVIDED
1	CANOPY TREE 	1X35=35
8	EVERGREEN SHRUB 	6X3=24
		59

1901-1909 FREEPOINT ROAD - CITY OF MADISON
 FIRE LANE, LANDSCAPING, AND LIGHTING PLAN
 PAGE: 4 OF 4
 DATED: NOVEMBER 20, 2012

QUAM ENGINEERING, LLC
 Residential and Commercial Site Design Consultants

 www.quamengineering.com
 4604 Siggelkow Road, Suite A - McFarland, Wisconsin 53558
 Phone (608) 838-7750; Fax (608) 838-7752