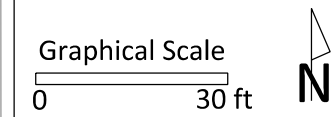


City of Madison
 Department of Public Works
PARKS DIVISION
 City-County Building, Suite 104
 210 Martin Luther King, Jr. Blvd.
 Madison, WI 53703

play
**MADISON
 PARKS**



PROJECT:
**WILLIAM SLATER
 PARK
 PLAYGROUND**

**WILLIAM SLATER PARK
 561 S SEGOE RD
 MADISON, WI 53711**

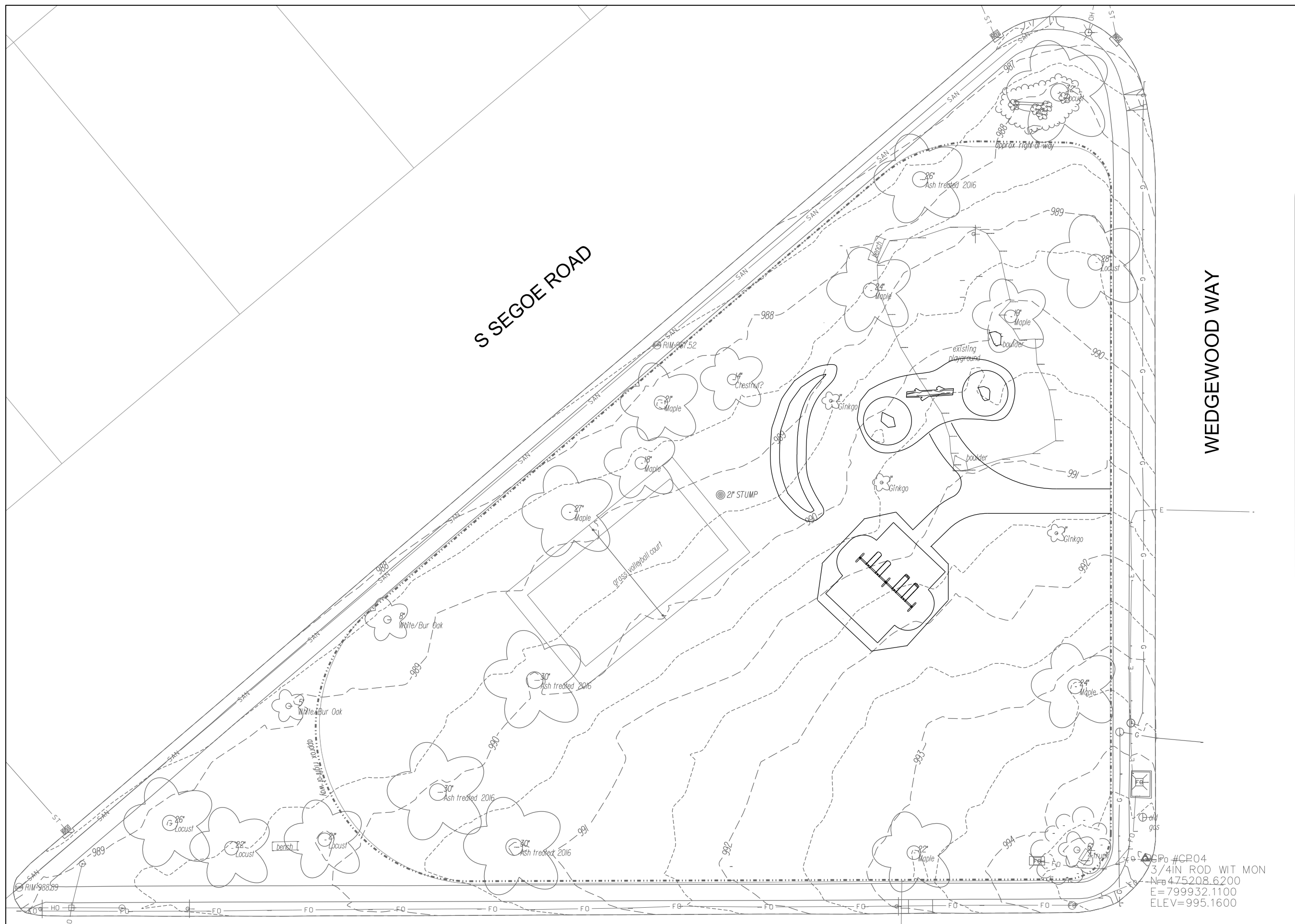
Although every effort has been made in preparing these plans and checking them for accuracy, the contractor and subcontractors must check all details and dimensions of their trade and be responsible for the same.

ITEM	DATE
Drawn by: KK	11-27-2018
Approved by:	xx-xx-xxxx

PUBLIC WORKS PROJECT #:

SHEET TITLE:
OPTION 1

SHEET NUMBER:



SPo #CR04
 3/4IN ROD WIT MON
 N= 475208.6200
 E= 799932.1100
 ELEV=995.1600