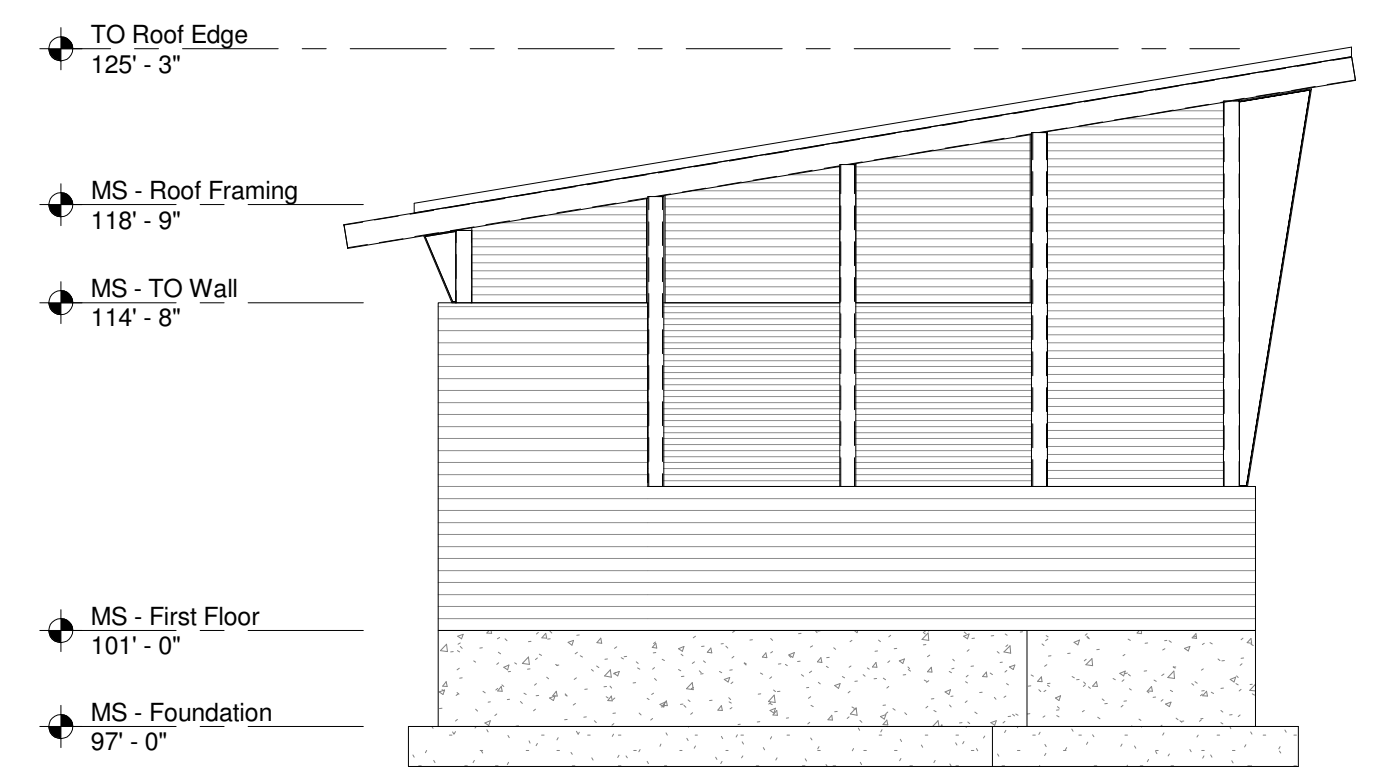
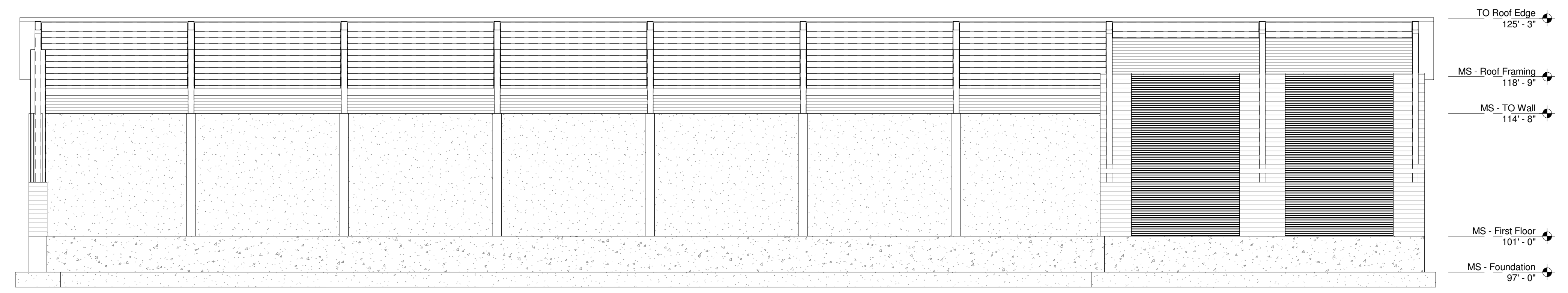


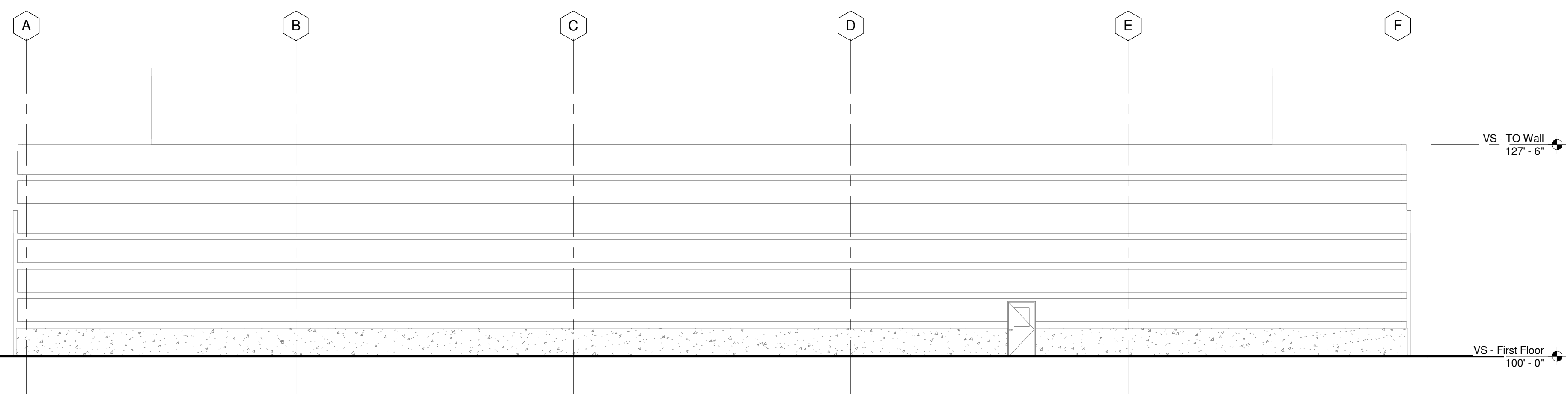
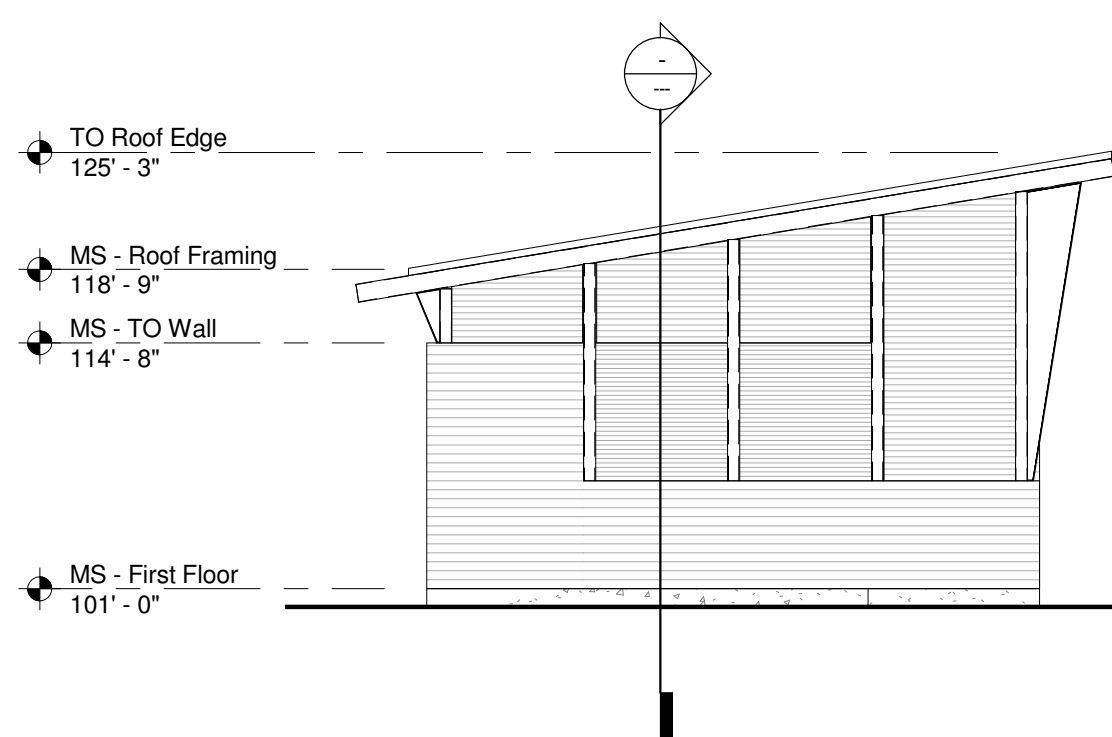
TRUE PLAN NORTH NORTH 1 MATERIAL STORAGE BUILDING FLOOR PLAN 1/8" = 1'-0"



3 WEST ELEVATION 1/8" = 1'-0"



2 SOUTH ELEVATION 1/8" = 1'-0"



1 OVERALL WEST ELEVATION  
3/32" = 1'-0"