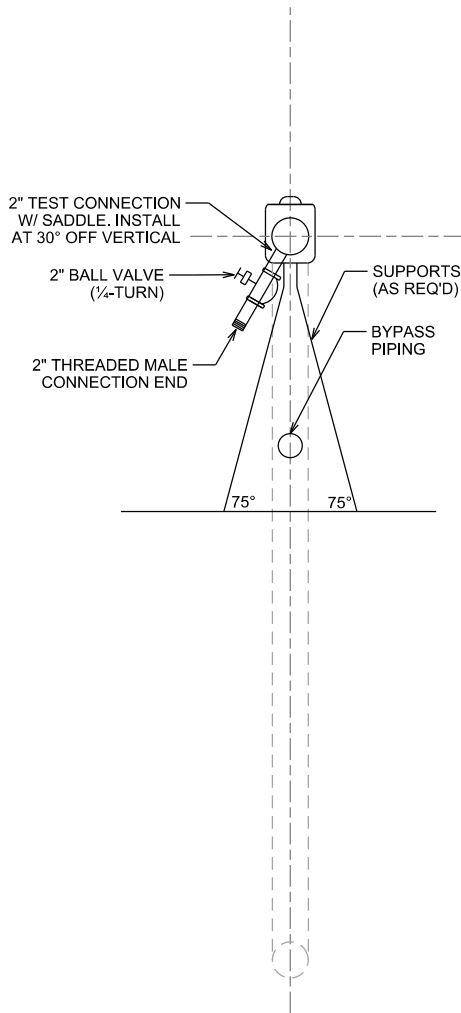
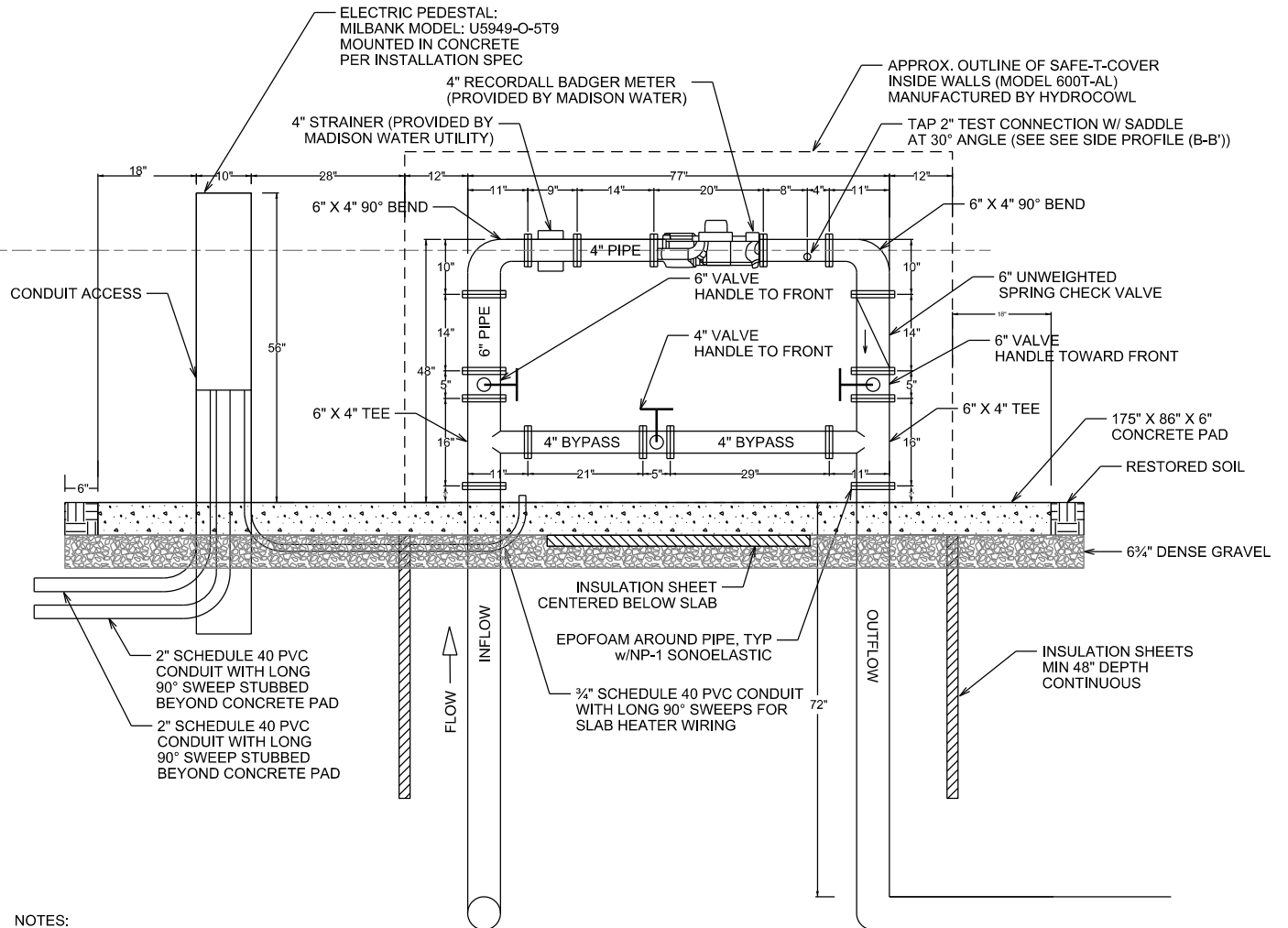


**SIDE PROFILE
(PIPE ONLY)**



FRONT PROFILE



NOTES:

ALL DIMENSIONS AND PIPING CORRESPOND TO 4" METER SIZE ONLY. VERIFY ALL DIMENSIONS AND PIPING CONFIGURATION WITH MADISON WATER UTILITY PRIOR TO BEGINNING WORK.

- ALL ABOVE-GROUND PIPE AND FITTINGS SHALL BE FLANGED JOINT AS FOLLOWS:
1. PIPE: COMPLY WITH ANSI A21.51, THICKNESS CLASS 53 WITH PIPE FLANGES FACED AND DRILLED TO ANSI CLASS 125 STANDARD TEMPLATE UNLESS OTHERWISE DESIGNATED ON THE DRAWINGS.
 2. FITTINGS: COMPLY WITH ANSI A21.10 OR ANSI B16.1.
 3. FLANGE GASKETS: 1/16-INCH THICK SHEET RUBBER, FULL FACE TYPE OR 1/8-INCH THICK FULL FACED AMERICAN TORUSEAL FLANGE GASKET.
 4. FLANGE BOLTS, STUDS, AND NUTS: ZINC PLATED TYPE COMPLYING WITH ANSI B16.1.

5. DRAWING IS SPECIFIC FOR 4-IN METER. COORDINATE WITH MADISON WATER UTILITY FOR OTHER SIZES.

6. ELECTRICAL BONDING SHALL BE LOCATED AS NOT TO RESTRICT REMOVAL OF METER FLANGE BOLTS.
7. ALL METERS SHALL BE SO LOCATED THAT THEY SHALL BE PROTECTED FROM OBSTRUCTIONS AND PERMIT READY ACCESS FOR READING, INSPECTION, AND SERVICING, SUCH LOCATION TO BE DESIGNATED OR APPROVED BY THE WATER UTILITY.

CITY OF MADISON
WATER UTILITY

NOT TO SCALE

WATER METER ENCLOSURE
(DIMENSIONS/PIPING SHOWN FOR 4" METER ONLY)