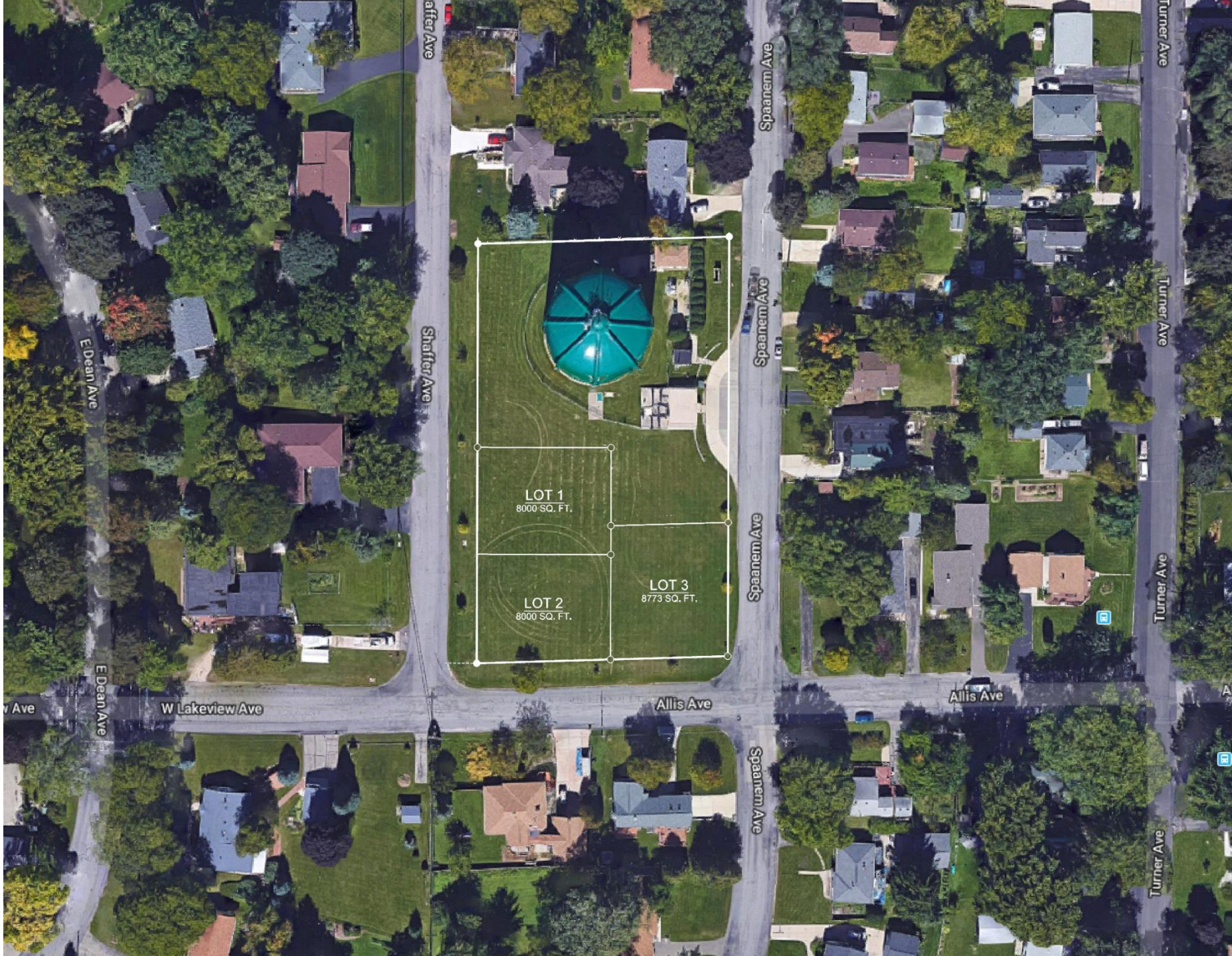


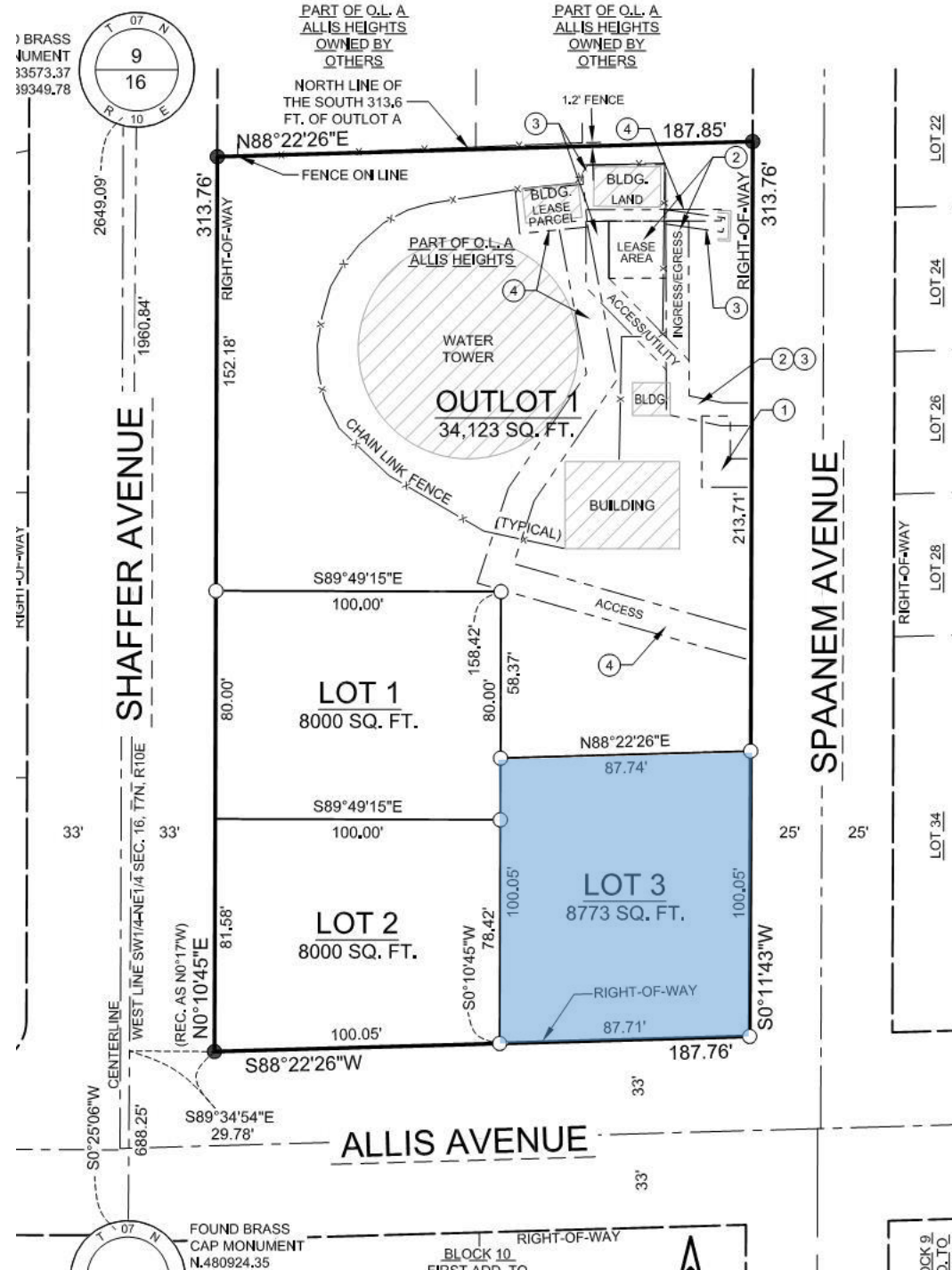


CITY OF MADISON WATER UTILITY

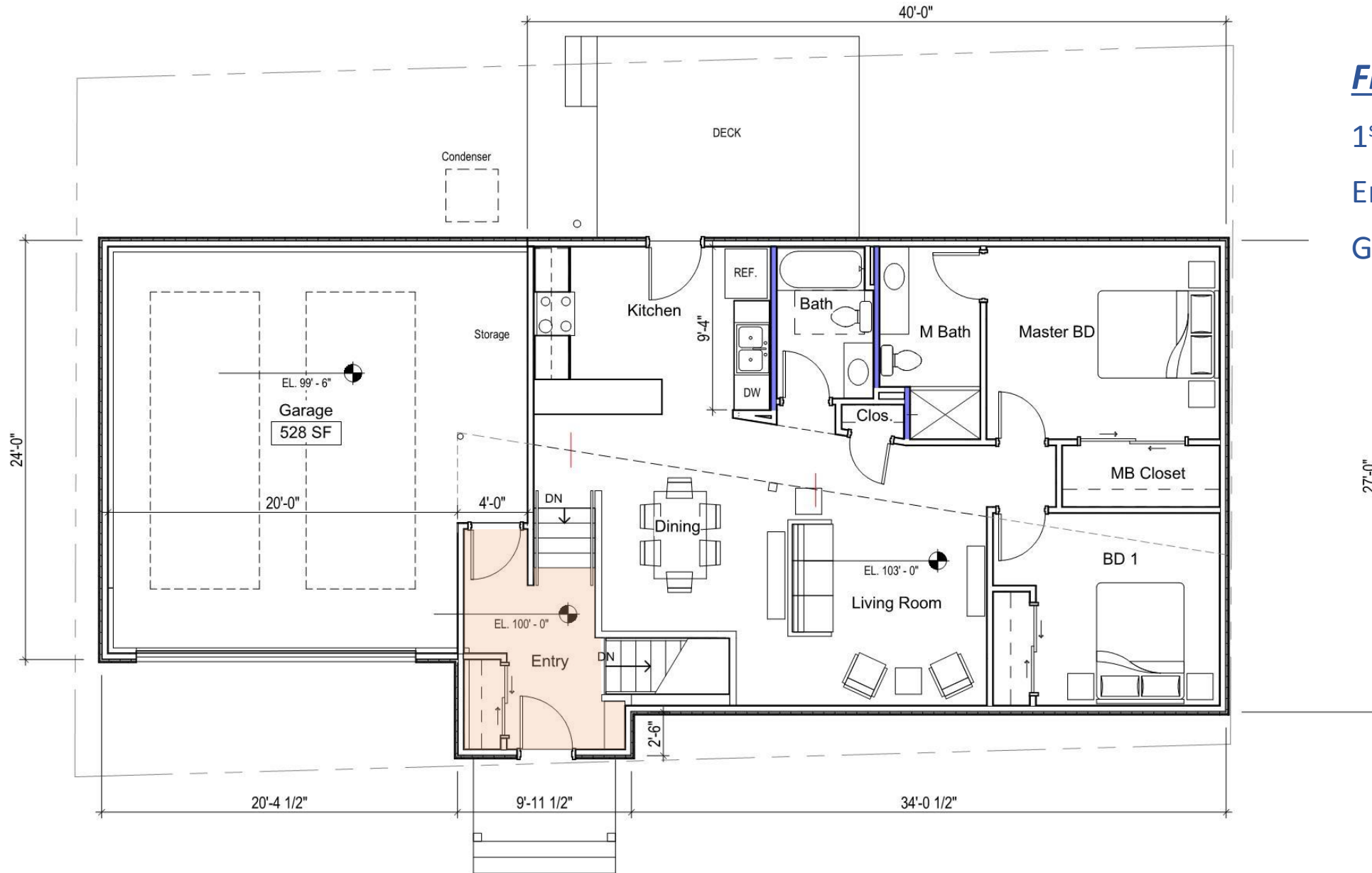
Madison Water Conservation House



Property Lines



NORTH



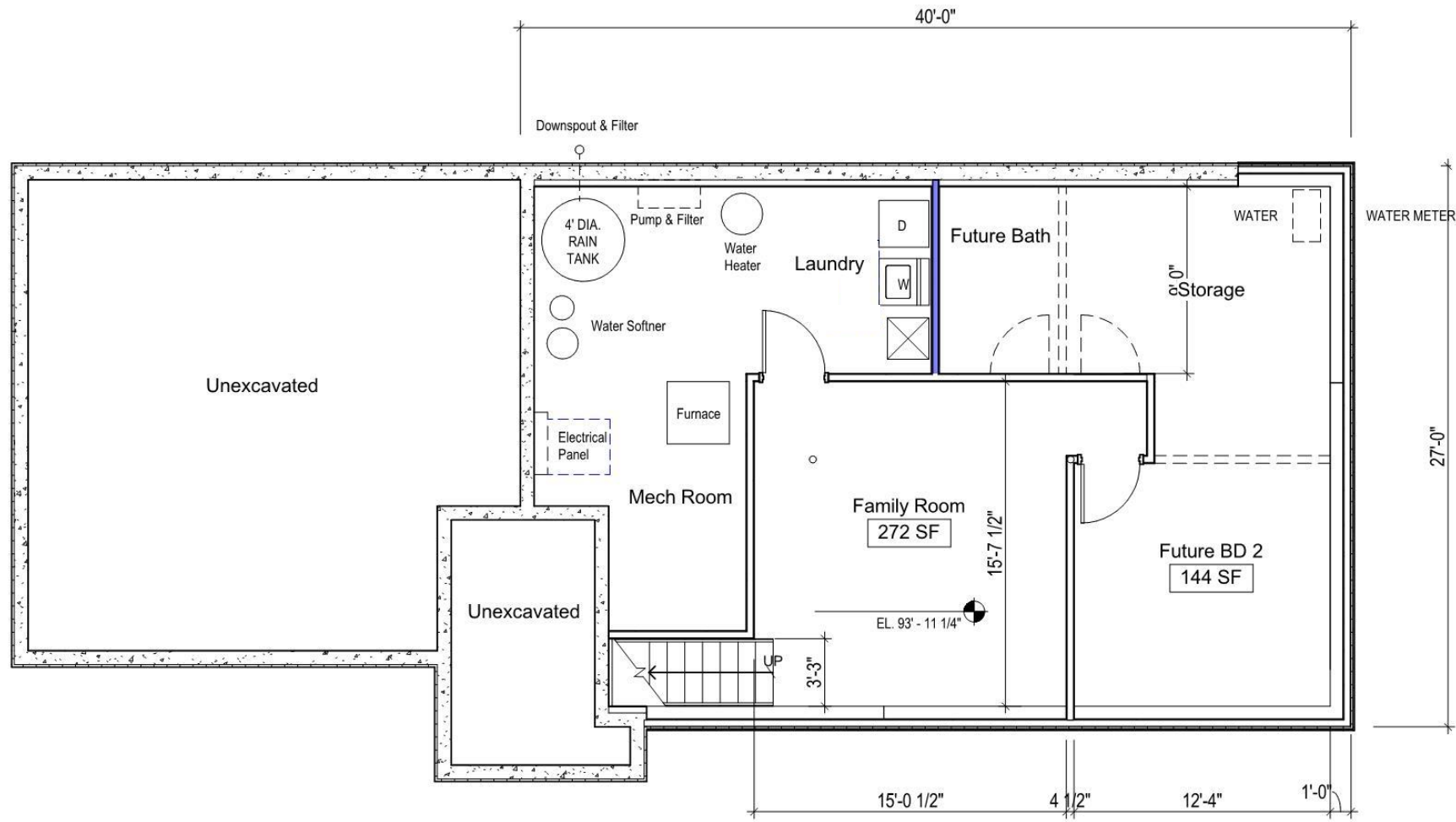
First Floor Plan

1st floor : 998 sqft

Entry: 103 sqft

Garage: 528 sqft





Lower Level Plan

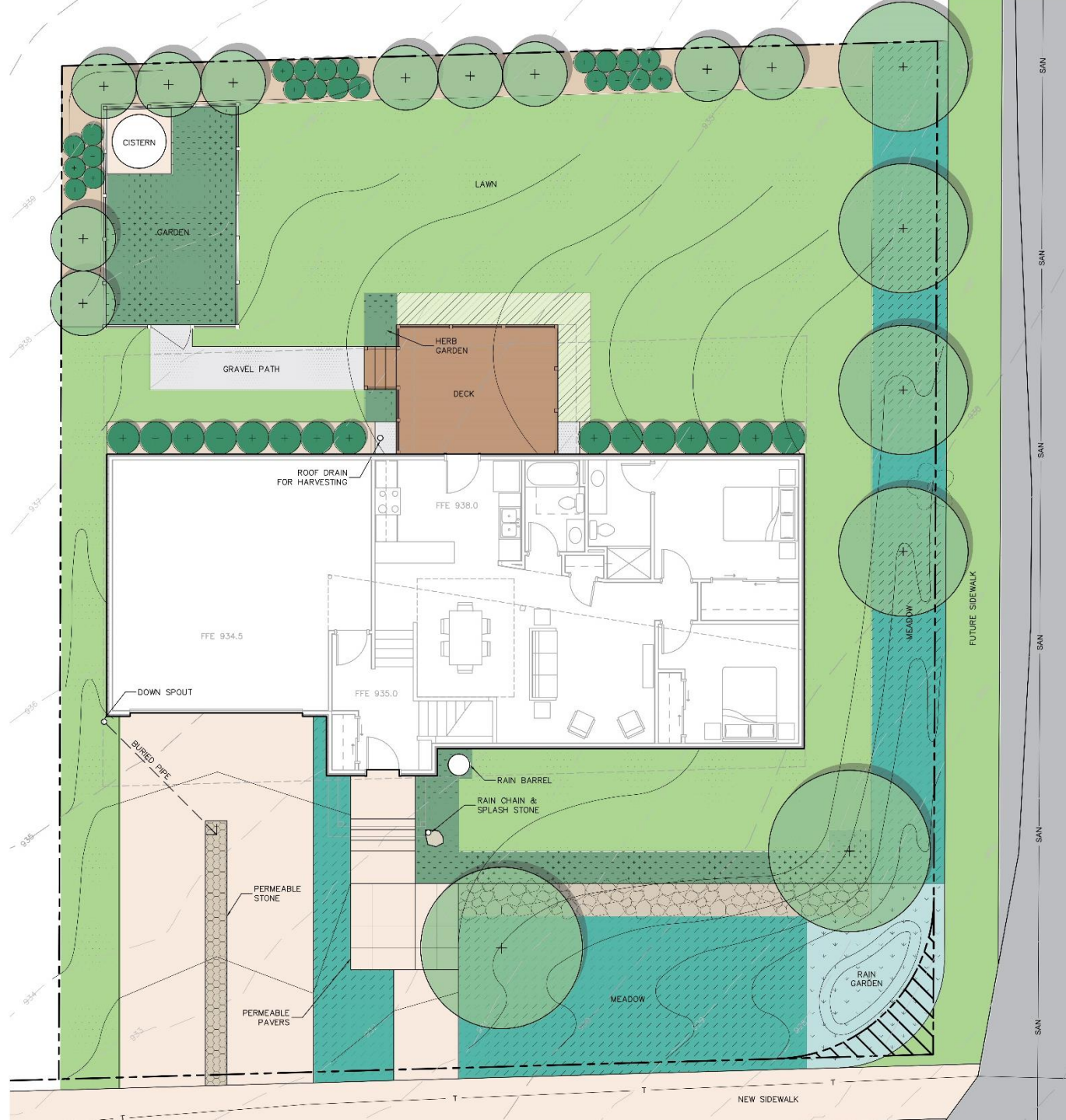
Lower Level: 272 sqft

Total House: 1,373 sqft




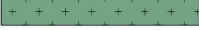



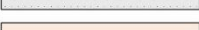


Future: +196 sqft

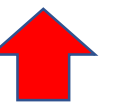


Landscaping Plan



LEGEND

-  EASEMENT/ROW LINE
-  PERMEABLE STONE
-  PERENNIAL PLANTING BED
-  ANNUAL PLANTING BED
-  MEADOW
-  RAIN GARDEN
-  NATIVE LAWN
-  GRAVEL
-  CONCRETE
-  DECORATIVE STONE

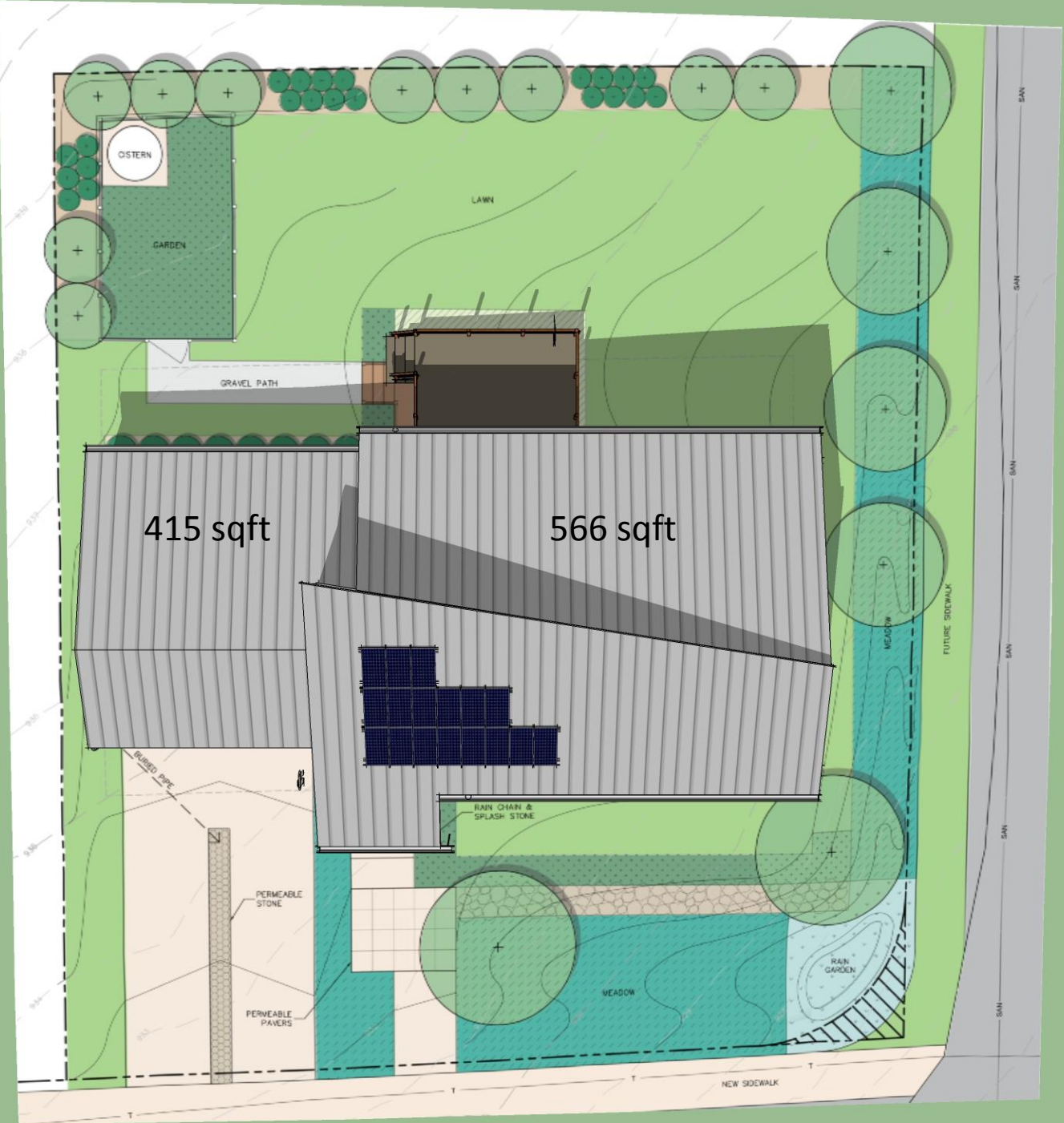


NORTH

Planting Mixes

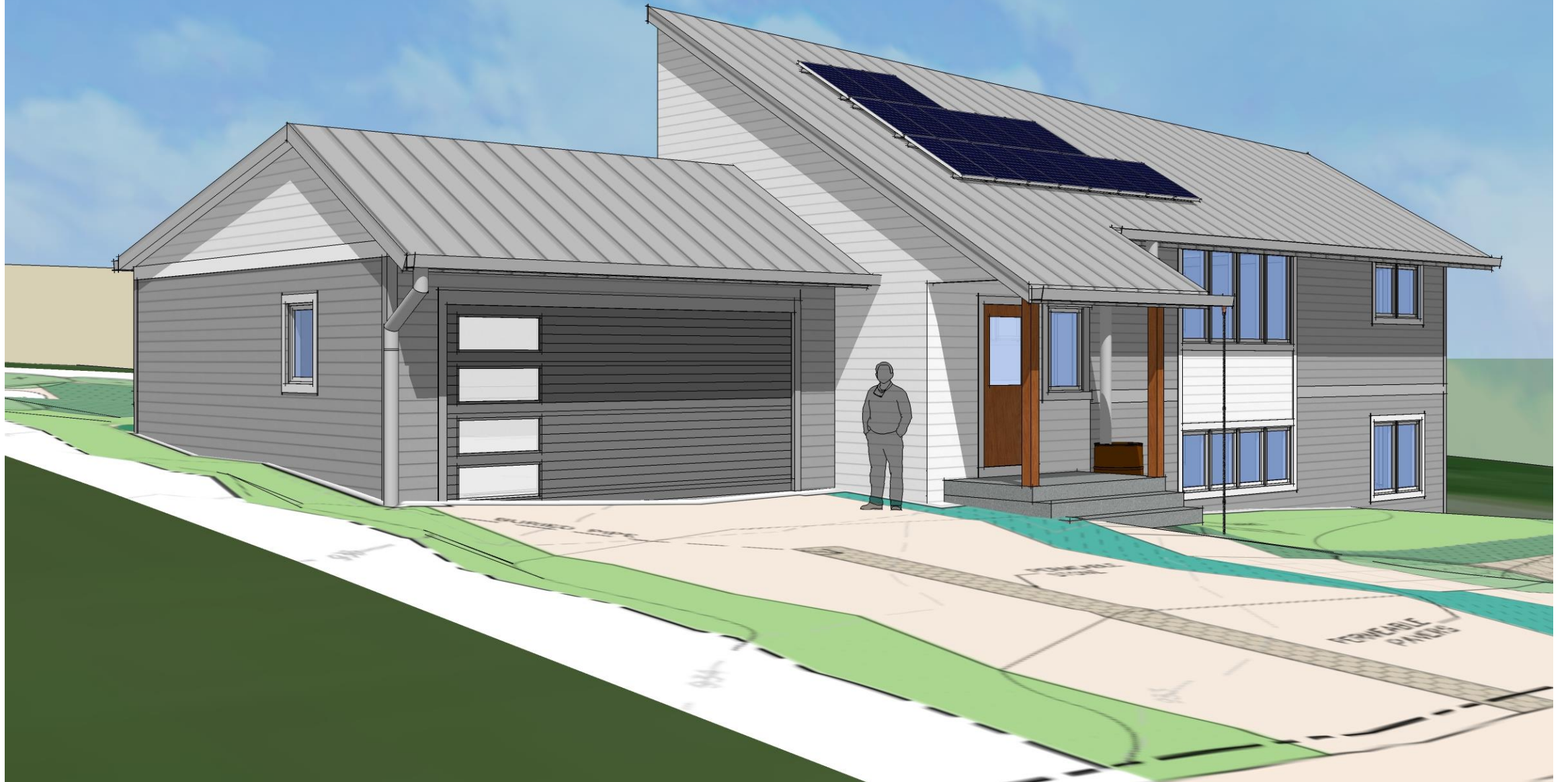


Roof Plan View

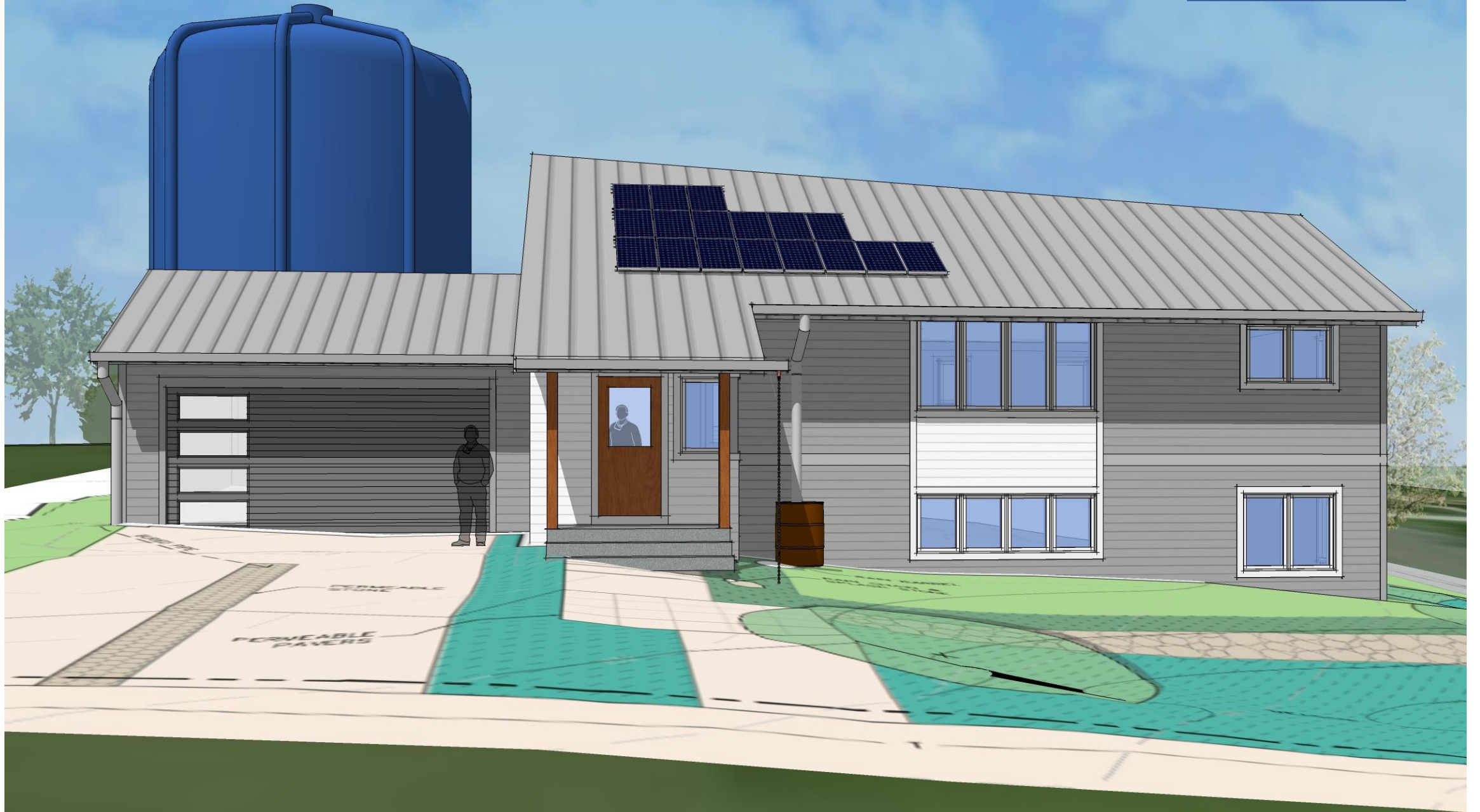


NORTH

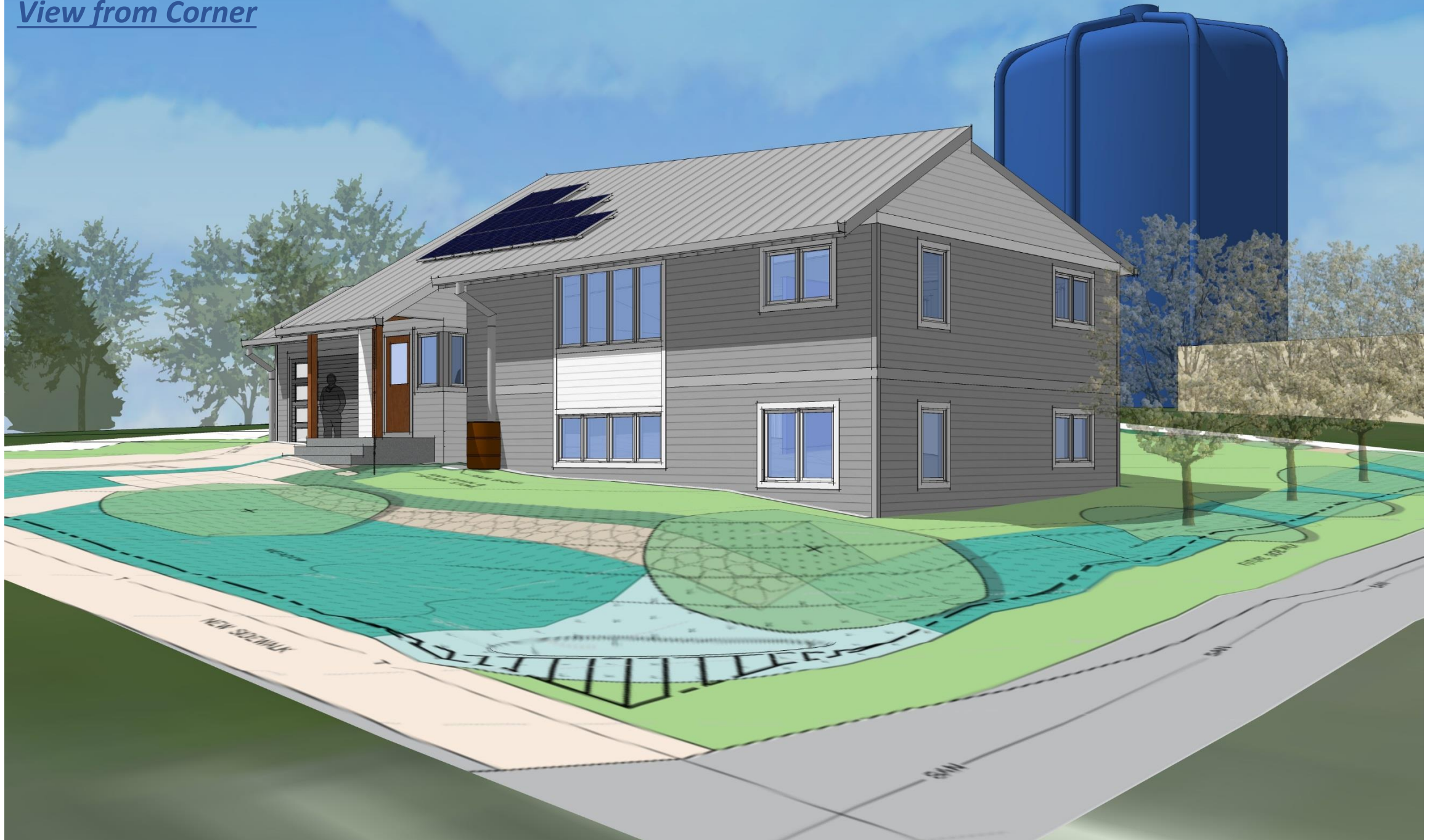
View from Allis St.



South Elevation



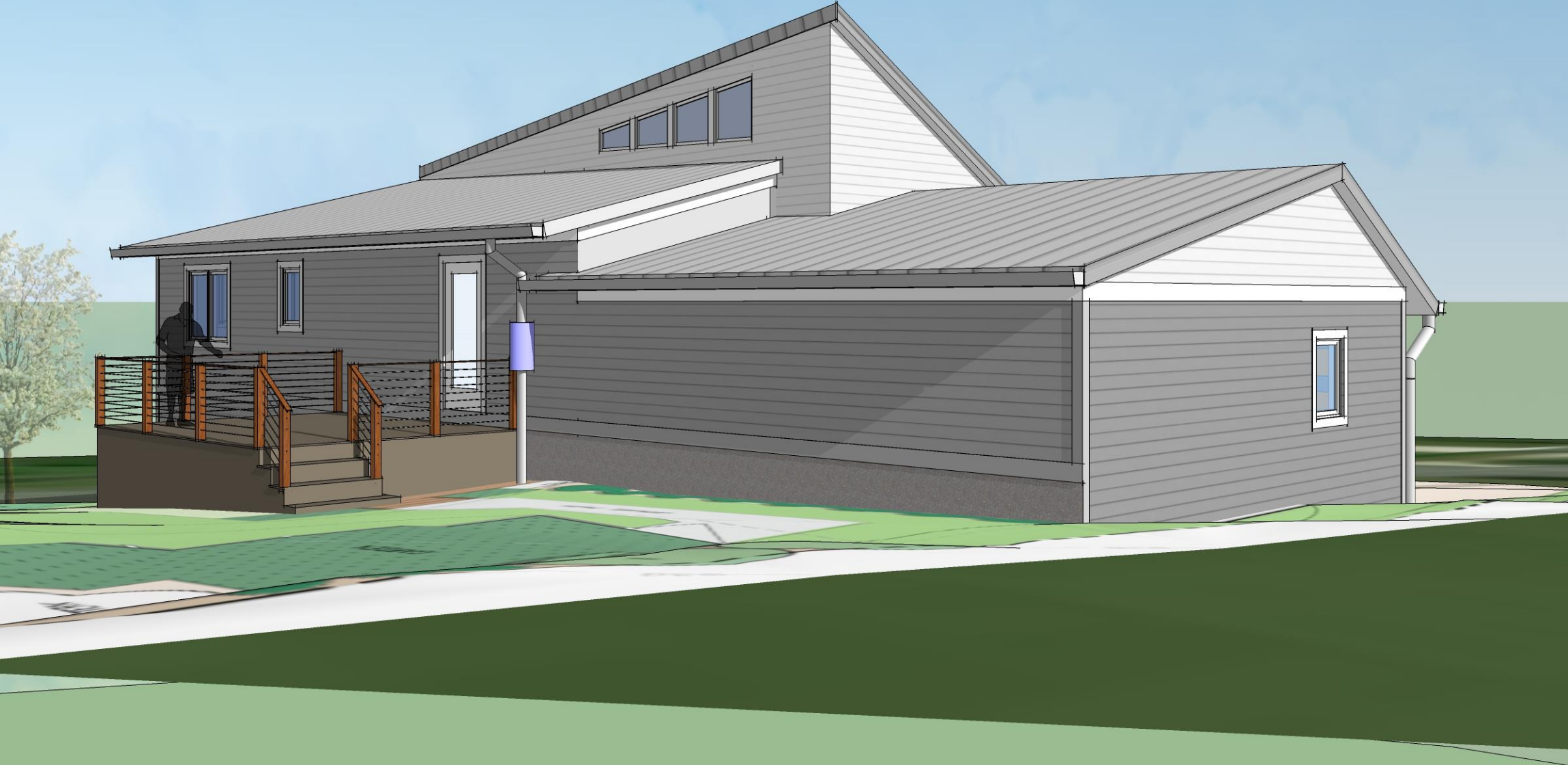
View from Corner



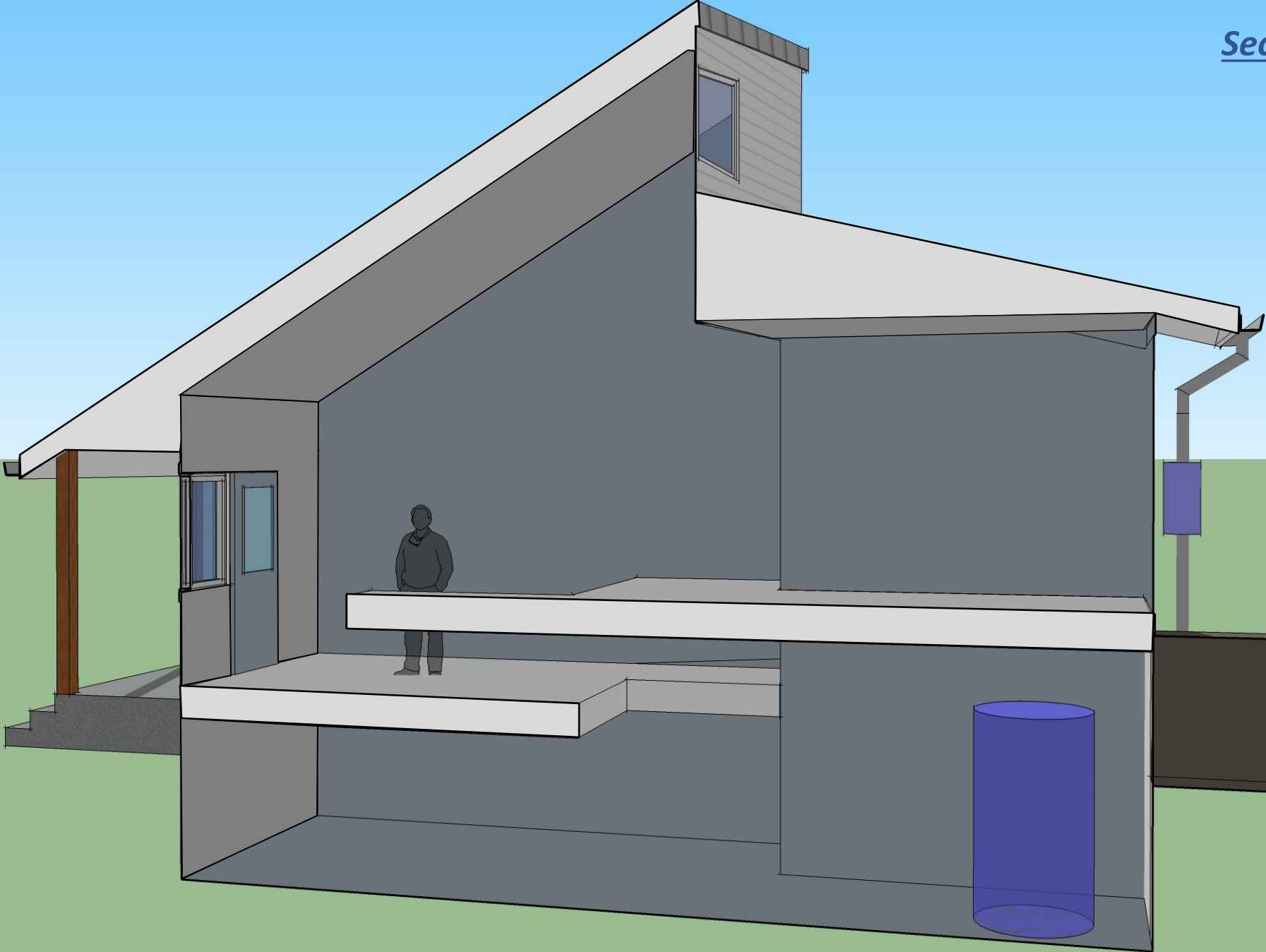
View from Spaanem Ave.



View from North West

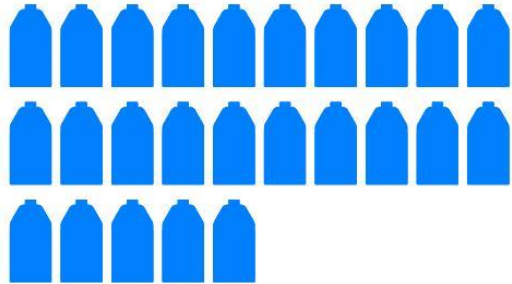


Section View



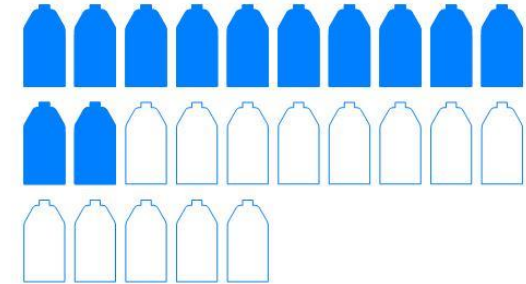
High Efficiency Fixtures

Standard

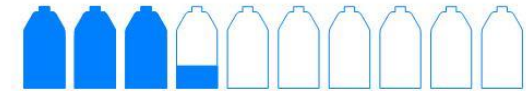


Showers

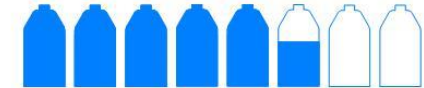
High Efficiency



Bath Faucets



Kitchen Faucets



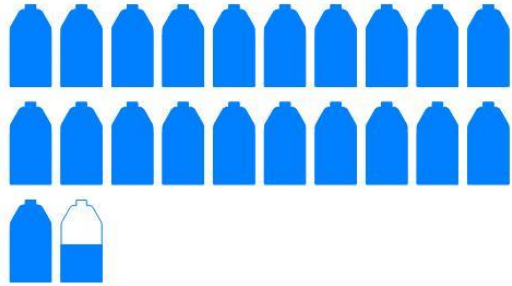
Toilets



gal / person/ day, based on 4-person occupancy

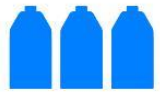
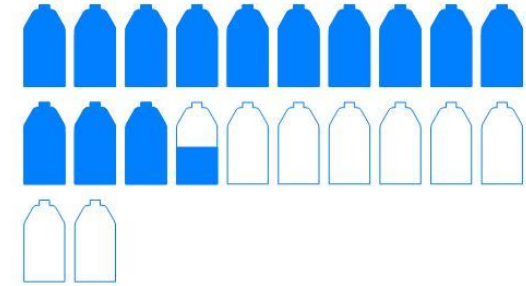
HIGH EFFICIENCY APPLIANCES and SYSTEMS

Standard

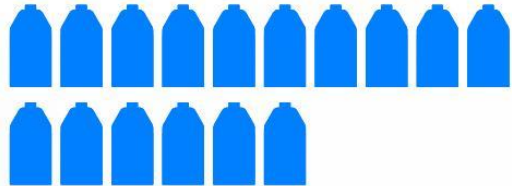


Clothes Washer

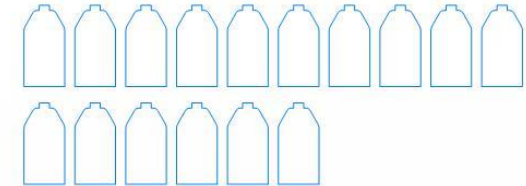
High Efficiency



Dish Washer

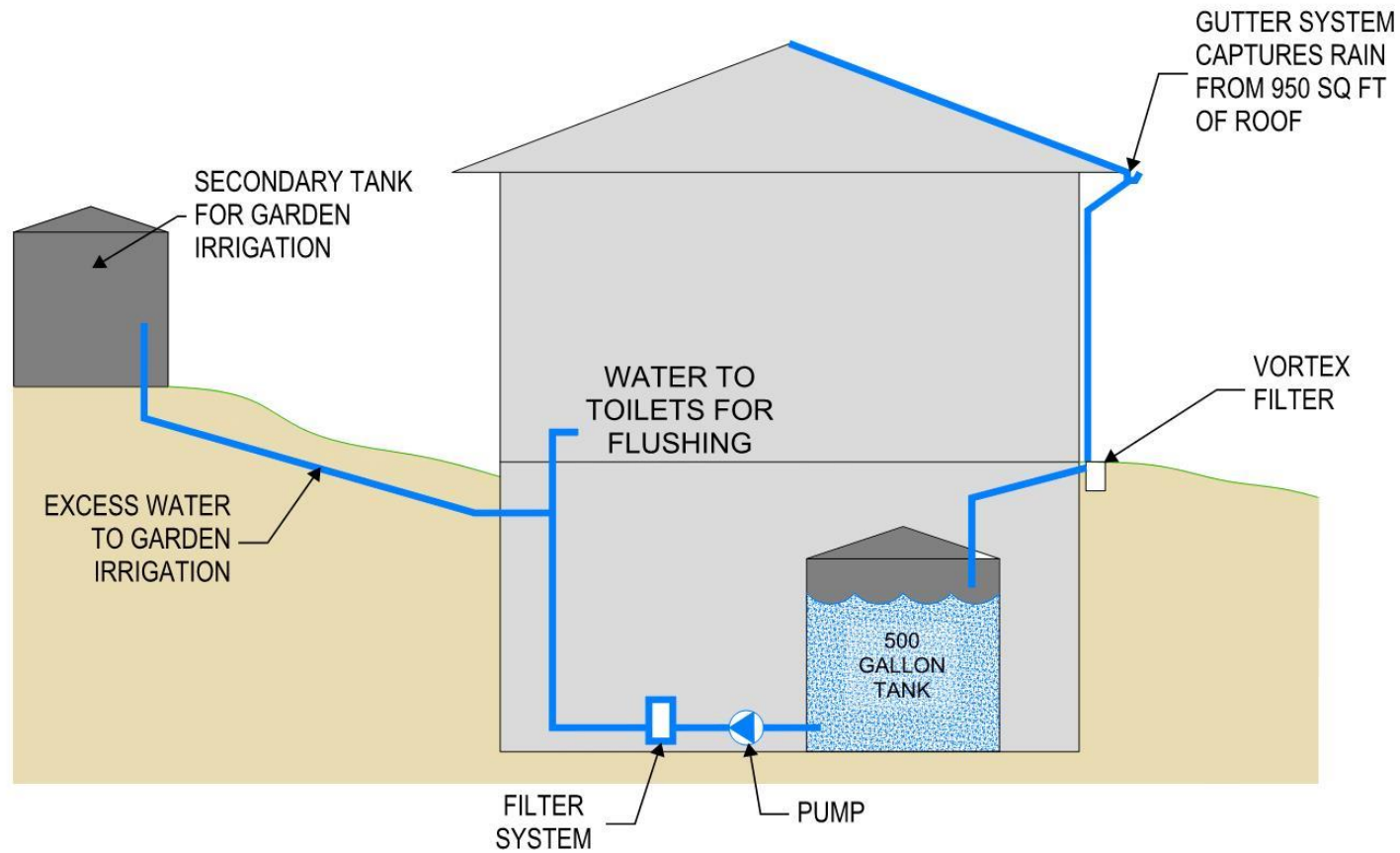


**Hot Water
Recirculation**



gal / day, based on 4-person occupancy

RAINWATER HARVESTING



ANNUAL RAINFALL:
31 INCHES

ANTICIPATED
COLLECTION:
13,800*

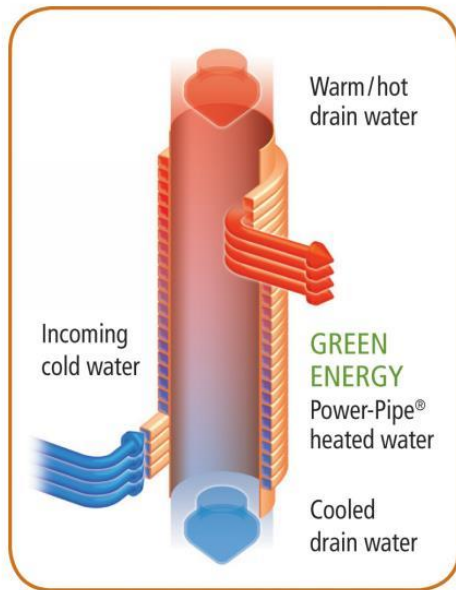
ANNUAL USAGE FOR
FLUSHING:
6,000 GAL

AVAILABLE FOR OTHER
USES:
7,800 GAL

*APPROX 75% COLLECTION
EFFECTIVENESS

ENERGY EFFICIENT WATER HEATING

Wastewater Heat Recovery



© 2009 RenewABILITY Energy Inc.

Heat Pump Water Heater



5kW Solar Collector



Saves up to 80% of Energy of Conventional Water Heater



Madison Water Conservation House

Questions?